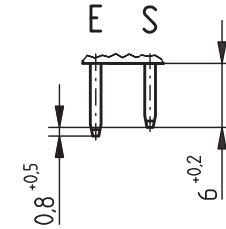
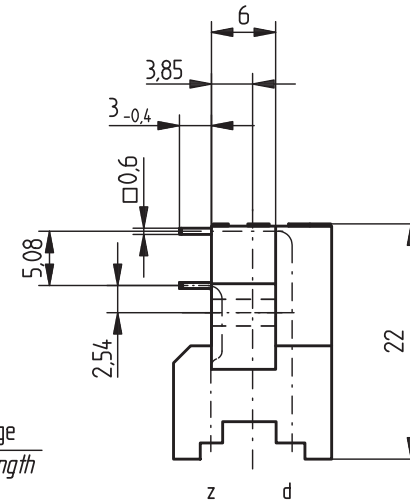


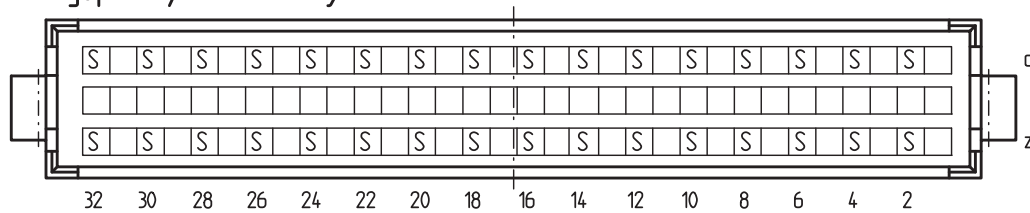
Stecklänge / mating length



E = early mate, late break / voreitend
S = standard



Bestückungsplan / contact layout



Lötanschluß 0,6 x 0,6 mm / solder terminal 0,6 x 0,6 mm

Isolierwerkstoff / housing material : PC GF30

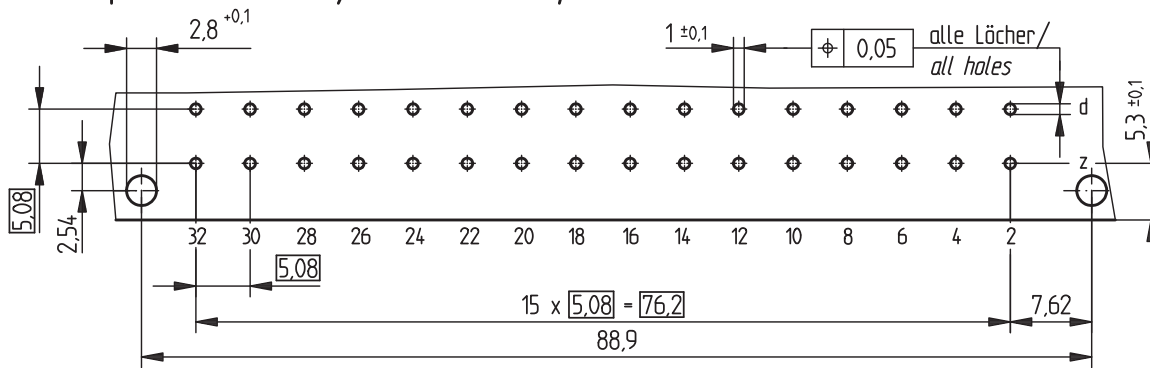
Bauart 3 / type 3

Anforderungsstufe 1 = 500 Steckzyklen / performance class 1 = 500 mating cycles

Fehlende Maße und Angaben nach IEC 60 603-2 / DIN EN 60 603-2

Missing information and dimensions per IEC 60 603-2

Leiterplatten-Lochbild / PCB drillhole pattern



Information: All rights reserved. Only for information. To insure that this is the latest version of this drawing, please contact one of the ERNI companies before using.	Tolerances	 All Dimensions in mm	Scale	2:1
	Subject to modification without prior notice. Drawing will not be updated.		Designation	
www.ERNI.com		Messerleiste F 32 Löt Male Connector F 32 Solder		
a Index		08.09.2006 Date		100500760003 K1
		V:00069121.SZA		STVF