

# MOTOROLA

## SEMICONDUCTOR

### TECHNICAL DATA

## SCANSWITCH

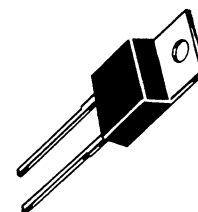
### Power Rectifier For High and Very High Resolution Monitors

This state-of-the-art Power Rectifier is specifically designed for use as a Damper Diode in horizontal deflection circuits for high and very high resolution monitors. In these applications, the outstanding performance of the MR10120E is fully realized when paired with either the MJH16206 or MJF16206 monitor specific, 1200 volt bipolar power transistor.

- 1200 Volt Blocking Voltage
- 20 milliJoules Avalanche Energy (Guaranteed)
- 12 Volt (Typical) Peak Transient Overshoot Voltage
- 135 ns (Typical) Forward Recovery Time

## MR10120E

**SCANSWITCH  
POWER RECTIFIER  
10 AMPERES  
1200 VOLTS**



**CASE 221B-01  
TO-220AC**

#### MAXIMUM RATINGS

Rating	Symbol	Value	Unit
Peak Repetitive Reverse Voltage Working Peak Reverse Voltage DC Blocking Voltage	$V_{RRM}$ $V_{RWM}$ $V_R$	1200	Volts
Average Rectified Forward Current (Rated $V_R$ , $T_C = 125^\circ\text{C}$ )	$I_{F(AV)}$	10	Amps
Peak Repetitive Forward Current (Rated $V_R$ , Square Wave, 20 kHz) $T_C = 125^\circ\text{C}$	$I_{FRM}$	20	Amps
Nonrepetitive Peak Surge Current (Surge applied at rated load conditions, halfwave, single phase, 60 Hz)	$I_{FSM}$	100	Amps
Operating Junction Temperature	$T_J$	-65 to +125	$^\circ\text{C}$
Controlled Avalanche Energy	$W_{AVAL}$	20	mJ

#### THERMAL CHARACTERISTICS

Thermal Resistance — Junction to Case	$R_{\theta JC}$	2.0	$^\circ\text{C/W}$
---------------------------------------	-----------------	-----	--------------------

#### ELECTRICAL CHARACTERISTICS

Characteristic	Symbol	Typ	Max	Unit
Maximum Instantaneous Forward Voltage (1) ( $I_F = 6.5$ Amps, $T_J = 125^\circ\text{C}$ ) ( $I_F = 6.5$ Amps, $T_J = 25^\circ\text{C}$ )	$V_F$	0.9 1.0	1.3 1.5	Volts
Maximum Instantaneous Reverse Current (1) (Rated dc Voltage, $T_J = 25^\circ\text{C}$ ) (Rated dc Voltage, $T_J = 125^\circ\text{C}$ )	$I_R$	5.0 50	50 500	$\mu\text{A}$
Maximum Reverse Recovery Time ( $I_F = 1.0$ A, $di/dt = 50$ Amps/ $\mu\text{s}$ )	$t_{rr}$	0.75	1.0	$\mu\text{s}$
Maximum Forward Recovery Time ( $I_F = 6.5$ Amps, $di/dt = 12$ Amps/ $\mu\text{s}$ ) (As Measured on a Deflection Circuit)	$t_{fr}$	135	175	ns
Peak Transient Overshoot Voltage	$V_{RFM}$	12	14	Volts

(1) Pulse Test: Pulse Width = 300  $\mu\text{s}$ , Duty Cycle  $\leq 2.0\%$ .

SCANSWITCH is a trademark of Motorola Inc.



# MOTOROLA

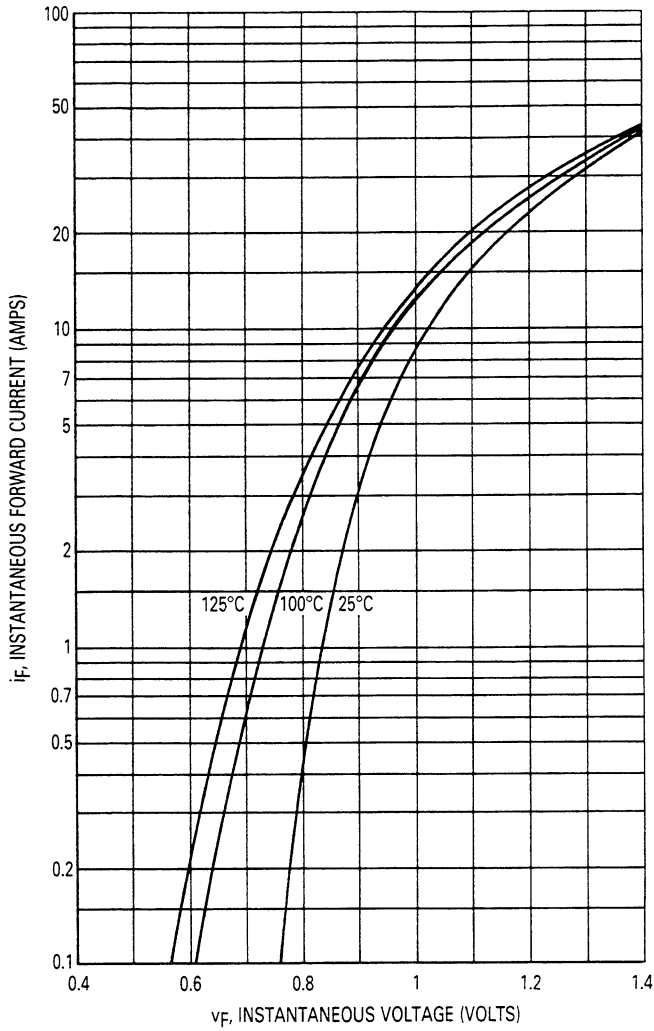


Figure 1. Typical Forward Voltage

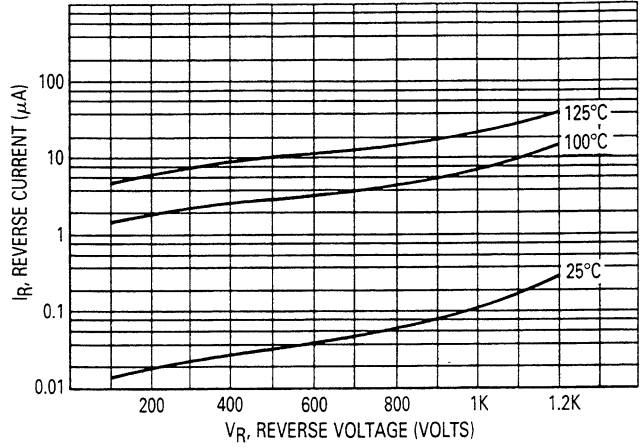


Figure 2. Typical Reverse Current

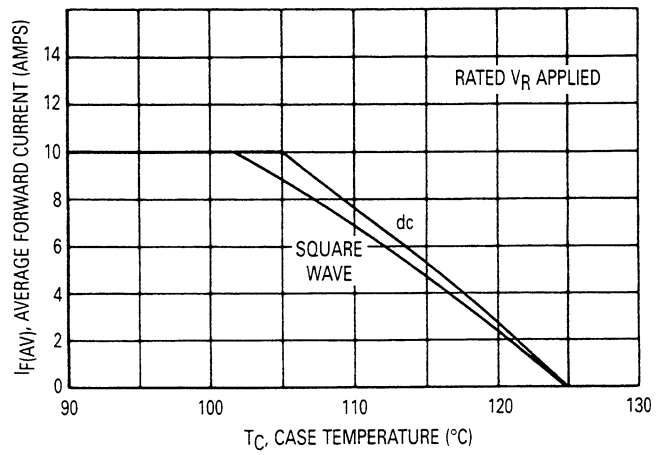


Figure 3. Current Derating (Case)

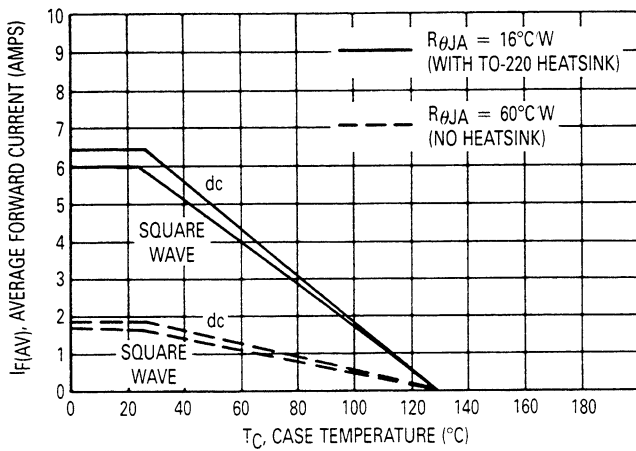


Figure 4. Current Derating Ambient

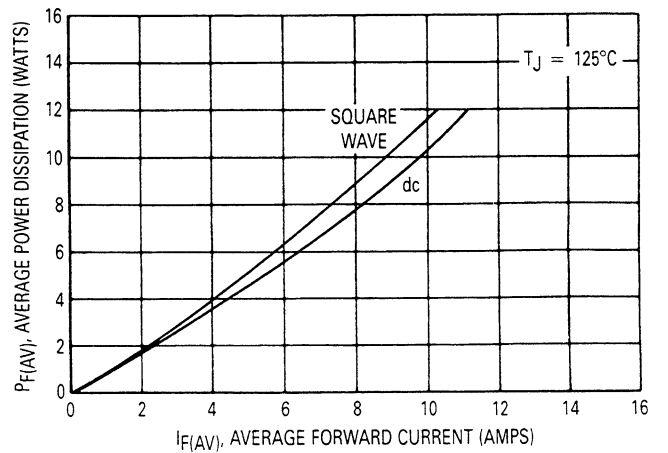
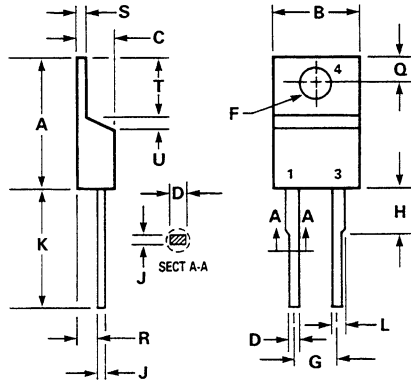



Figure 5. Forward Power Dissipation

## OUTLINE DIMENSIONS



DIM	MILLIMETERS		INCHES	
	MIN	MAX	MIN	MAX
A	15.11	15.75	0.595	0.620
B	9.65	10.29	0.380	0.405
C	4.06	4.82	0.160	0.190
D	0.64	0.89	0.025	0.035
F	3.61	3.73	0.142	0.147
G	4.83	5.33	0.190	0.210
H	2.79	3.30	0.110	0.130
J	0.36	0.56	0.014	0.022
K	12.70	14.27	0.500	0.562
L	1.14	1.27	0.045	0.050
Q	2.54	3.04	0.100	0.120
R	2.04	2.79	0.080	0.110
S	1.14	1.39	0.045	0.055
T	5.97	6.48	0.235	0.255
U	0.76	1.27	0.030	0.050

CASE 221B-01  
TO-220AC

Motorola reserves the right to make changes without further notice to any products herein. Motorola makes no warranty, representation or guarantee regarding the suitability of its products for any particular purpose, nor does Motorola assume any liability arising out of the application or use of any product or circuit, and specifically disclaims any and all liability, including without limitation consequential or incidental damages. "Typical" parameters can and do vary in different applications. All operating parameters, including "Typicals" must be validated for each customer application by customer's technical experts. Motorola does not convey any license under its patent rights nor the rights of others. Motorola products are not designed, intended, or authorized for use as components in systems intended for surgical implant into the body, or other applications intended to support or sustain life, or for any other application in which the failure of the Motorola product could create a situation where personal injury or death may occur. Should Buyer purchase or use Motorola products for any such unintended or unauthorized application, Buyer shall indemnify and hold Motorola and its officers, employees, subsidiaries, affiliates, and distributors harmless against all claims, costs, damages, and expenses, and reasonable attorney fees arising out of, directly or indirectly, any claim of personal injury or death associated with such unintended or unauthorized use, even if such claim alleges that Motorola was negligent regarding the design or manufacture of the part. Motorola and  are registered trademarks of Motorola, Inc. Motorola, Inc. is an Equal Opportunity/Affirmative Action Employer.

**Literature Distribution Centers:**

USA: Motorola Literature Distribution; P.O. Box 20912; Phoenix, Arizona 85036.

EUROPE: Motorola Ltd.; European Literature Centre; 88 Tanners Drive, Blakelands, Milton Keynes, MK14 5BP, England.

JAPAN: Nippon Motorola Ltd.; 4-32-1, Nishi-Gotanda, Shinagawa-ku, Tokyo 141, Japan.

ASIA PACIFIC: Motorola Semiconductors H.K. Ltd.; Silicon Harbour Center, No. 2 Dai King Street, Tai Po Industrial Estate, Tai Po, N.T., Hong Kong.



**MOTOROLA**

25125R PRINTED IN USA (1993) MPS/POD RECT YAABAA

MR10120E/D

