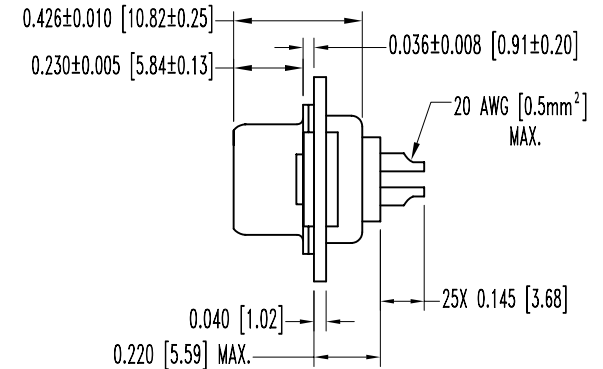
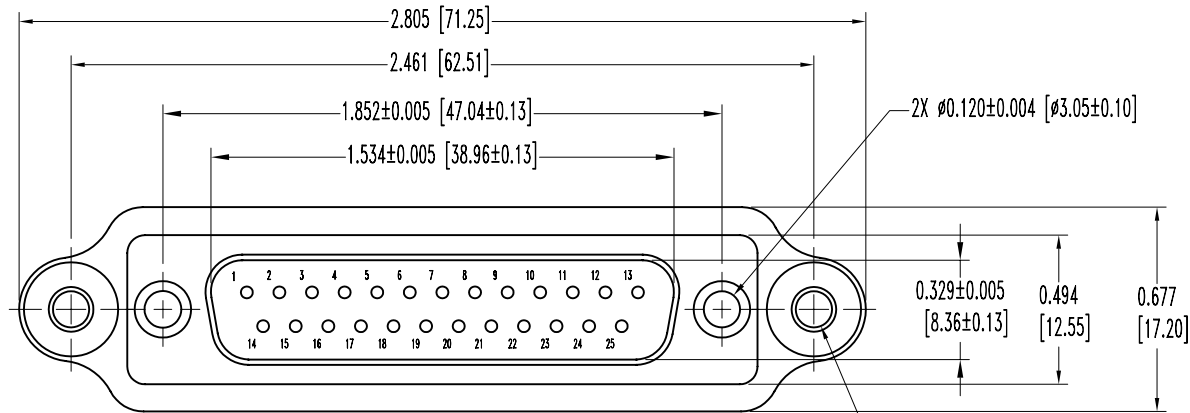


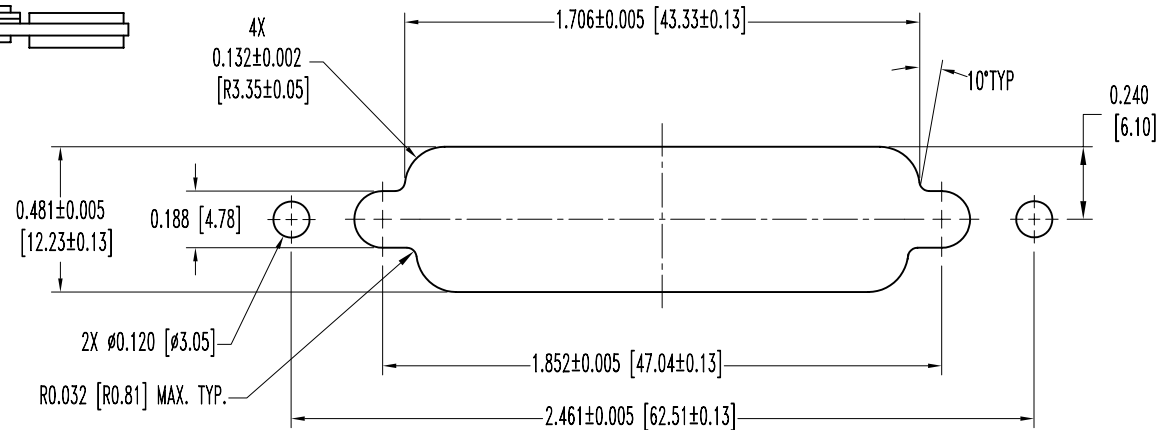
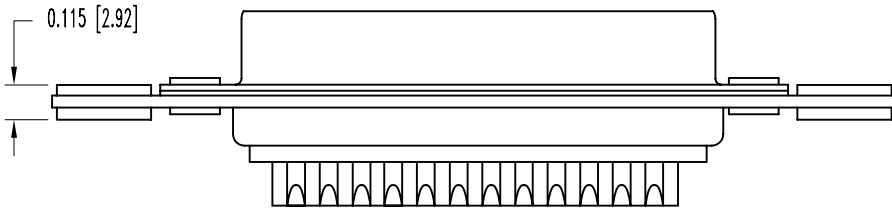
SK7796

POSITRONIC INDUSTRIES BELIEVES THE DATA ON THIS DRAWING TO BE RELIABLE. SINCE THE TECHNICAL INFORMATION IS GIVEN FREE OF CHARGE, THE USER EMPLOYS SUCH INFORMATION AT HIS OWN DISCRETION AND RISK. POSITRONIC INDUSTRIES ASSUMES NO RESPONSIBILITY FOR RESULTS OBTAINED OR DAMAGES INCURRED FROM USE OF SUCH INFORMATION IN WHOLE OR IN PART.

DATE	REV	REVISION RECORD	APP	DR	CK
7-31-06	NC	ECO 26396	TK	YK	TK
10-30-06	A	ECO 26942		ME	



∅0.120 [∅3.05] HOLE.  
0.033 [0.84] TOTAL DIAMETER FLOAT;  
0.010 [0.25] TOTAL AXIAL FLOAT.



PANEL CUTOUT

NOTES:

- MATERIALS AND FINISHES:  
INSULATOR: GLASS FILLED DAP PER ASTM-D-5948, SDG-F, UL 94V-0, GREEN COLOR.  
CONTACTS: PRECISION MACHINED BRASS ALLOY, GOLD FLASH OVER NICKEL PLATE.  
SHELLS: STAINLESS STEEL, PASSIVATED.  
MOUNTING PLATE: ALUMINUM, YELLOW ANODIZED.  
FLOAT BUSHINGS: BRASS, ZINC PLATE WITH DICHROMATE SEAL.  
FLOAT WASHERS: BRASS, ZINC PLATE WITH DICHROMATE SEAL.
- ELECTRICAL CHARACTERISTICS:  
CONTACT CURRENT RATING: 7.5 AMPERES NOMINAL.  
INITIAL CONTACT RESISTANCE: 0.005 OHMS MAXIMUM.  
INSULATOR RESISTANCE: 5 G OHMS.  
WORKING VOLTAGE: 300 V r.m.s.  
TEMPERATURE RANGE: -55°C TO +125°C.
- MOS 759.1 ALLOWS FOR BLIND MATE MOUNTING PLATE TO BE INSTALLED.
- DIMENSIONS ARE IN INCHES [MILLIMETERS].

 <b>POSITRONIC INDUSTRIES INC.</b> www.connectpositronic.com		SCALE	DRAWN BY
		N.T.S.	YK
DECIMAL TOL.	HDC SERIES	APPROVED BY	
± 0.015 [0.38]	TITLE	T. KEPLEY	
	HDC25M2000S-759.1		
ANGULAR TOL.	DATE	DRAWING NUMBER	REV.
± 5°	7-31-06	SK7796	A