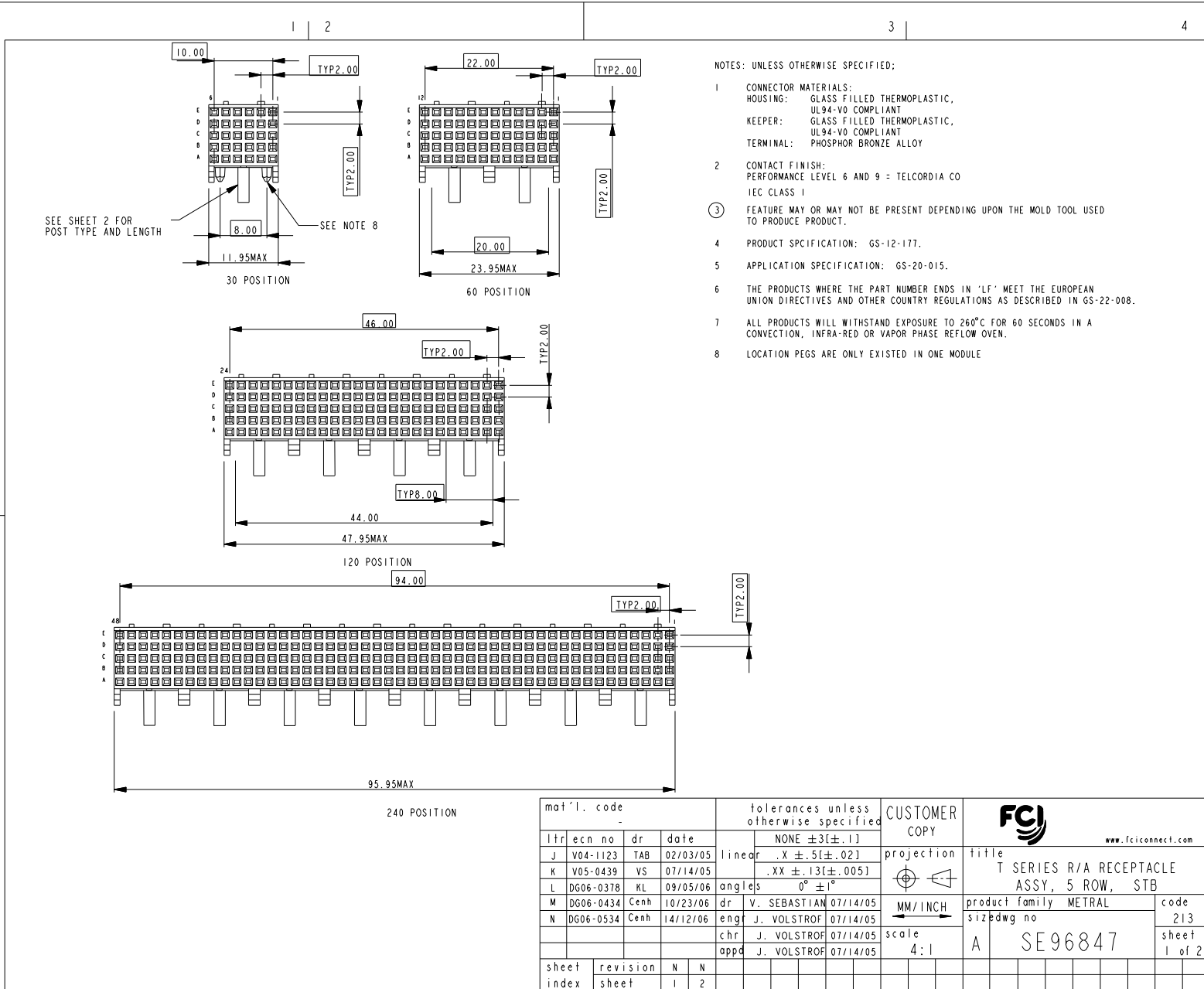


Tous droits strictement réservés. Reproduction ou communication à des tiers interdite sous quelque forme que ce soit sans autorisation écrite du propriétaire. Propriété de FCJ. Copyright FCJ.

All rights strictly reserved. Reproduction or issue to third parties in any form whatever is not permitted without written authority from the proprietor. Property of FCJ. Copyright FCJ.



mat'l. code				tolerances unless otherwise specified		CUSTOMER COPY		www.fciconnect.com	
ltr	ec'n no	dr	date	NONE ±3[±.1]	linear	.X ±.5[±.02]	projection	title	
J	V04-1123	TAB	02/03/05			.XX ±.13[±.005]		T SERIES R/A RECEPTACLE	
K	V05-0439	VS	07/14/05	angles		0° ±1°		ASSY, 5 ROW, STB	
L	DG06-0378	KL	09/05/06	dr	V. SEBASTIAN	07/14/05	MM/INCH	product family METRAL	
M	DG06-0434	Cenh	10/23/06	engr	J. VOLSTROF	07/14/05	scale	size	
N	DG06-0534	Cenh	14/12/06	chr	J. VOLSTROF	07/14/05	4:1	dwg no	
				appd	J. VOLSTROF	07/14/05		A SE96847	
sheet index	revision sheet	N 1	N 2					code 213	
								sheet 1 of 2	
							cage code		4
							22526		

ACAD

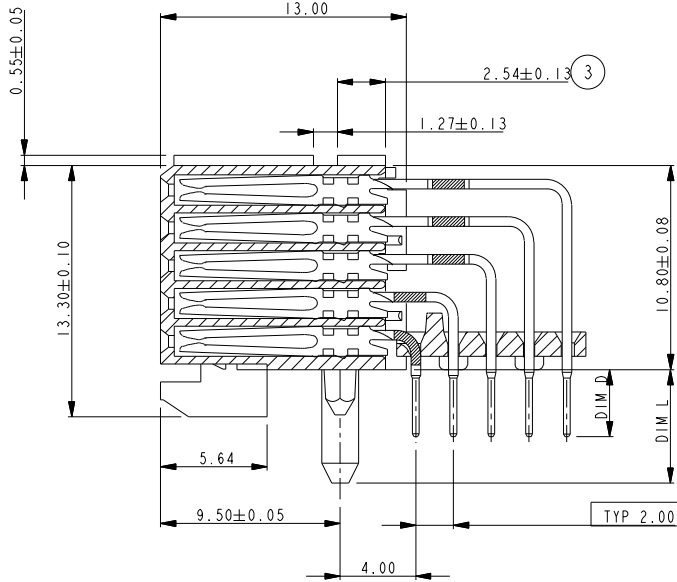
PDM: Rev:N

STATUS Released

Printed: Apr 18, 2008

Tous droits strictement réservés. Reproduction ou communication à des tiers interdite sous quelque forme que ce soit sans autorisation écrite du propriétaire. Propriété de © FCI. - Droits de reproduction FCI.

All rights strictly reserved. Reproduction or issue to third parties in any form whatever is not permitted without written authority from the proprietor. Property of FCI. - Copyright FCI.



	PCB THICKNESS	DIM D	DIM L	RETENTION FEATURES
HMI F 5_ T A R 000 H6	1.60	2.90±0.30	5.20	HEAT STAKE PEGS
HMI F 5_ T B R 000 H6	2.40	3.60±0.30		
HMI F 5_ T A P 000 H6	1.60	2.90±0.30	3.00	PRESS-FIT PEGS
HMI F 5_ T B P 000 H6	2.40	3.60±0.30		

CATALOG NUMBER DESCRIPTION

HMI F 5 - T - 000 H 6

PRODUCT FAMILY
HMI = METRAL HMI

PRODUCT TYPE
F = FEMALE SIGNAL, RIGHT ANGLE

NUMBER OF ROWS
5 = 5 ROW

BODY LENGTH
1 = 12.00 (30 POSITION SIGNAL)
2 = 24.00 (60 POSITION SIGNAL)
3 = 48.00 (120 POSITION SIGNAL)
4 = 96.00 (240 POSITION SIGNAL)

MATING CONTACT
T = TWISTED FEMALE

PCB TERMINATION TYPE
A = SOLDER TAIL, FOR 1.6mm PCB
B = SOLDER TAIL, FOR 2.4mm PCB

LF = LEAD FREE Sn PLATING ON TAILS
- = SnPb PLATING ON TAILS

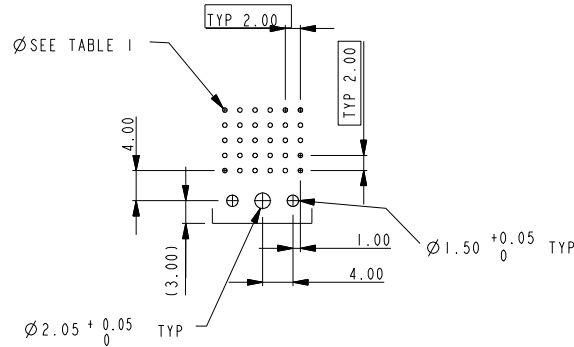
P = PACKAGED IN TRAYS
- = PACKAGED IN TUBES

PERFORMANCE LEVEL
6 = 125 DAYS OPERATION + 10 DAYS MIXED GAS + 125 DAYS OPERATION
9 = 125 DAYS OPERATION + 10 DAYS MIXED GAS + 125 DAYS OPERATION

INSULATING MATERIAL
H = HIGH TEMPERATURE MATERIAL

VARIATIONS
000 = STANDARD

BOARD ATTACHMENT
R = HEAT STAKE RETENTION PEG
P = PRESS-FIT RETENTION PEG



RECOMMENDED PC BOARD LAYOUT, COMPONENT SIDE
SEE PRINT 58351 FOR ADDITIONAL PCB INFORMATION

mat'l. code		tolerances unless otherwise specified		CUSTOMER COPY		FCI	
lfr	ecn no	dr	date	NONE ±3[±.1]	projection	www.fciconnect.com	
N				.X ±.5[±.02]	MM/INCH	title	
				.XX ±.13[±.005]	MM/INCH	T SERIES R/A RECEPTACLE ASSY, 5 ROW, STB	
				angles 0° ±1°	scale	product family METRAL	
				dr V. SEBASTIAN 07/14/05	4:1	code	
				eng J. VOLSTROF 07/14/05		size	
				chr J. VOLSTROF 07/14/05		dwg no	
				app J. VOLSTROF 07/14/05		213	
sheet index	revision sheet					sheet	
						2 of 2	
						cage code	
						22526	

ACAD

PDM: Rev:N

STATUS Released

Printed: Apr 18, 2008