

20 STERN AVE.
 SPRINGFIELD, NEW JERSEY 07081
 U.S.A.

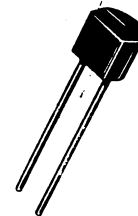
TELEPHONE: (973) 376-2
 (212) 227-6
 FAX: (973) 376-8

SILICON 3-LAYER BILATERAL TRIGGERS

... Annular, two terminal devices that exhibit bi-directional negative resistance switching characteristics. These economical, durable devices have been developed for use in thyristor triggering circuits for lamp drivers and universal motor speed controls.

- Switching Voltage Range – 20 to 36 Volts Nominal
- Symmetrical Characteristics
- Passivated Surface for Reliability and Uniformity

**SILICON
 BILATERAL TRIGGERS**

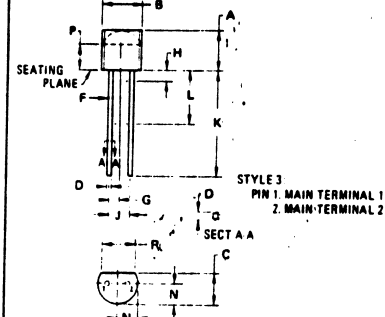


***MAXIMUM RATINGS** (T_A = 25°C unless otherwise noted)

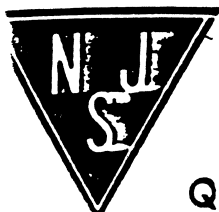
Rating	Symbol	Value	Unit
Peak Pulse Current (30 μs duration, 120 Hz repetition rate)	I _{pulse}	2.0	Amp
Power Dissipation @ T _A = -40 to +25°C Derate above 25°C	P _D	300 4.0	mW mW/°C
Operating Junction Temperature Range	T _J	-40 to +100	°C
Storage Temperature Range	T _{stg}	-40 to +150	°C

***ELECTRICAL CHARACTERISTICS** (T_A = 25°C unless otherwise noted)

Characteristic	Symbol	Min	Max	Unit	
Switching Voltage (Both Directions)	V _S	1N5758	16	24	Volts
		1N5759	20	28	
		1N5760	24	32	
		1N5761	28	36	
		1N5762	32	40	
		1N5758A	18	22	
		1N5759A	22	26	
		1N5760A	26	30	
Switching Current (Both Directions) (T _A = -40 to +75°C)	I _S	1N5758/5762	-	100	μA
		1N5758A, 5762A	-	25	
Switching Voltage Change (Both Directions) (ΔI = I _S to I = 10 mA)	ΔV	1N5758, A, 1N5759, A	5.0	-	Volts
		1N5760, A, 61, A, 62, A	7.0	-	
Leakage Current (Both Directions), (Applied Voltage = 14 Volts)	I _B	-	10	μA	
Switching Voltage Symmetry	(V _{S+}) - (V _{S-})	1N5758/5762	-	± 4.0	Volts
		1N5758A/5762A	-	± 2.0	
Peak Pulse Amplitude (Figure 1) (Both Polarities)		1N5758, A, 1N5759, A	3.0	-	Volts
		1N5760, A, 61, A, 62, A	5.0	-	



DIM	MILLIMETERS		INCHES	
	MIN	MAX	MIN	MAX
A	4.32	5.33	0.170	0.210
B	4.45	5.21	0.175	0.205
C	3.18	4.19	0.125	0.165
D	0.354	0.533	0.014	0.021
F	0.407	0.482	0.016	0.019
G	1.27 BSC	-	0.050 BSC	-
H	-	1.27	-	0.050
J	2.54 BSC	-	0.100 BSC	-
K	12.70	-	0.500	-
L	6.35	-	0.250	-
N	2.03	2.68	0.080	0.105
P	2.93	-	0.115	-
R	3.43	-	0.135	-



Quality Semi-Conductors