

Complete TAM-3517 industrial and automotive development board compatible with any display through LVDS, TTL, HDMI/DVI, VGA, S-Video interfaces.

Expand storage options with USB, SATA and micro-SD card slot.

Dual LAN, CAN bus, RS-232, RS-422/485, SPI, I²C to control remote or external devices.

System

System on module Compatible with TAM-3517 by a 200 pin SO-DIMM connector (**B1**)
RTC with backup coin battery (**13**)

Interfaces

Connectors 3 standard-USB hosts (**26, 27**)
 1 mini-USB device/ OTG (**10**)
 LAN connector (**22**) (EMAC)
 LAN connector (**23**) (SMSC 9220)
 micro-SD card slot (**bottom**)
 SATA connector for 2.5" HDD (**bottom**)
 3.5 mm stereo audio in/out (**19, 20**)
 3.5 mm microphone (**18**)
 2W amplified speaker (**16, 17**)
 18 bit LVDS and touchpanel (**30**)
 TTL & touchpanel for 4.3" LCD
 TTL & touchpanel for 7" LCD (**1**)
 S-video out (**15**)
Expansion header DVI-D by HDMI connector (**28**)
 VGA by pinheader (**12**),
 CAN bus (**21**), SPI,
 RS-232 (**9**), RS-422/485 (**24**),
 UART, I²C, GPIO (**4**)

Power

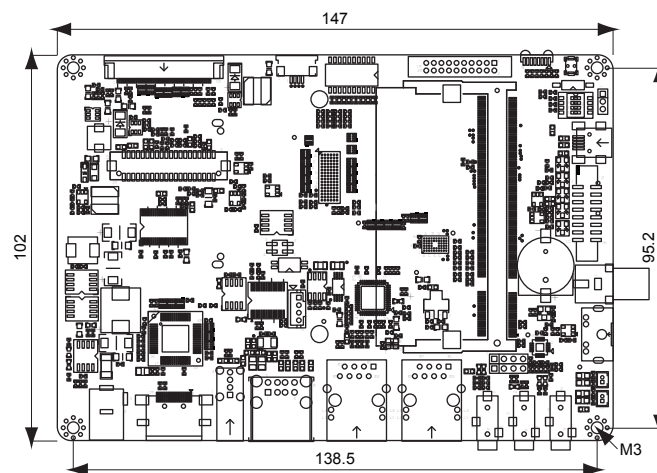
Input power 12 VDC

Environmental and Mechanical

Temperature Commercial: 0° to 50° C
Humidity 10-90%
Dimensions 147 x 102 mm (5¾ x 4 inch)
Weight 92 grams
Shock 50G / 25ms
Vibration 20G / 0-600 Hz

Dimensions

units in mm



Order Information

Twister Base board for TAM-3517 series

Development kits available

TechNexion

Phone: +886-2-8227-3585
E-mail: sales@technexion.com
Web: <http://www.technexion.com>

