

## GENERAL SPECIFICATIONS

### Electrical Capacity

**Resistive Load:** 15A & ½ HP @ 125 or 250V AC for high capacity models  
**Lamp Load:** 5A @ 125V AC

### Other Ratings

**Contact Resistance:** 15 milliohms maximum  
**Insulation Resistance:** 100 megohms minimum @ 500V DC  
**Dielectric Strength:** 1,000V AC minimum between contacts for 1 minute minimum;  
 1,500V AC minimum between contacts & case for 1 minute minimum  
**Mechanical Life:** 1,000,000 operations minimum  
**Electrical Life:** 50,000 operations minimum  
**Travel:** Pretravel .047" (1.19mm); Overtravel .040" (1.01mm); Differential .011" (0.27mm)  
**Operating Temp Range:** -40°C through +85°C (-40°F through +185°F)

### Materials & Finishes

**Caps & Shrouds:** Polycarbonate with glossy finish or PBT  
**Plunger:** Polyacetal or brass with nickel plating  
**Bushing:** Steel with zinc plating or glass fiber reinforced polyamide  
**Case:** Polyester  
**Movable & Stationary Contacts:** Silver alloy  
**Terminals:** Brass with silver plating

### Standards & Certifications

**UL:** Internal snap switch is UL recognized.  
**CSA:** Internal snap switch is CSA certified.

## TYPICAL SWITCH ORDERING EXAMPLE

**SCB** **2** **5** **P** **15** **A** — **4** **CA**

| Poles |      |
|-------|------|
| 1     | SPDT |
| 2     | DPDT |

| Circuits        |    |      |
|-----------------|----|------|
| 5               | ON | (ON) |
| 6               | ON | ON   |
| ( ) = Momentary |    |      |

| Bushings |                               |
|----------|-------------------------------|
| P        | Plastic (with momentary only) |
| S        | Steel                         |

| Rating |     |
|--------|-----|
| 15     | 15A |

| Terminals  |                              |
|--|------------------------------|
| A  | .187" (4.75mm) Quick Connect |
| * B  | .250" (6.35mm) Quick Connect |
| Note: Contact factory for availability of screw lug and solder lug models. |                              |
| * Available in Americas only   |                              |

| Caps & Shrouds                   |  |
|----------------------------------|--|
| For Momentary                    |  |
| 3                                | .520" (13.2mm) Diameter Cap              |
| For Momentary & Alternate Action |  |
| 4                                | Round Cap & Shroud (AT454 & AT455)       |
| 5                                | Rectangular Cap & Shroud (AT452 & AT453) |

| Colors |       |         |
|--------|-------|---------|
|        | Caps  | Shrouds |
| A      | Black | A       |
| B      | White | B       |
| C      | Red   | -       |
| F      | Green | -       |
| G      | Blue  | -       |
| H      | Gray  | H       |

**DESCRIPTION FOR TYPICAL ORDERING EXAMPLE**  
**SCB25P15A-4CA**

Round Red Cap with Black Shroud  
 Plastic Bushing  
 DPDT ON-(ON) Circuit  
 15A Rating  
 .187" (4.75mm) Quick Connect Terminals

Note: Standard hardware is provided with caps. See Bushing detail for more information.

Toggles

Rockers

Pushbuttons

Illuminated PB

Keylocks

Rotaries

Slides

Tactiles

Tilt





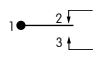
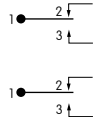
Touch

Indicators

Accessories

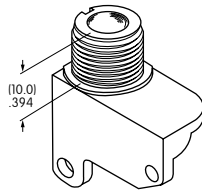
Supplement

## POLES & CIRCUITS

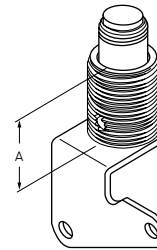
|      |                | Plunger Position<br>( ) = Momentary  |   | Connected Terminals  |  | Throw & Schematics   |
|------|----------------|--|---|--|--|--|
| Pole | Model          | Normal<br> Keyway | Down<br> | Normal<br> Keyway | Down<br> | Note: Terminal numbers are actually on the switch.   |
| SP   | SCB15<br>SCB16 | ON<br>ON   | (ON)<br>ON  | 1-2  | 1-3  | SPDT                |
| DP   | SCB25<br>SCB26 | ON<br>ON   | (ON)<br>ON  | 1-2 1-2  | 1-3 1-3  | SP with 2 switches  |

## BUSHINGS

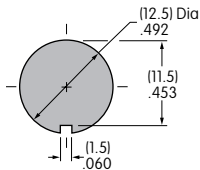
**P** Plastic  
(for Momentary only)



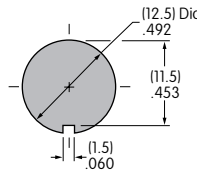
**S** Steel



"A" =  
11.2mm  
Momentary  
15.5mm  
Alternate Action



Maximum Effective Panel Thickness:  
.165" (4.2mm) without Shroud  
.157" (4.0mm) with Shroud



Maximum Effective Panel Thickness:  
Momentary: .177" (4.5mm) without Shroud  
.157" (4.0mm) with Shroud  
Alternate Action: .354" (9.0mm)

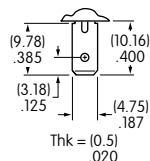
### Standard Hardware Provided with Caps

Cap Option 3: AT504M Knurled Face Nut, AT508 Lockwasher, AT527M Hex Mounting Nut

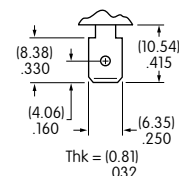
Cap Options 4 & 5: AT508 Lockwasher & AT527M Hex Mounting Nut

## TERMINALS

**A** .187" (4.75mm)  
Quick Connect

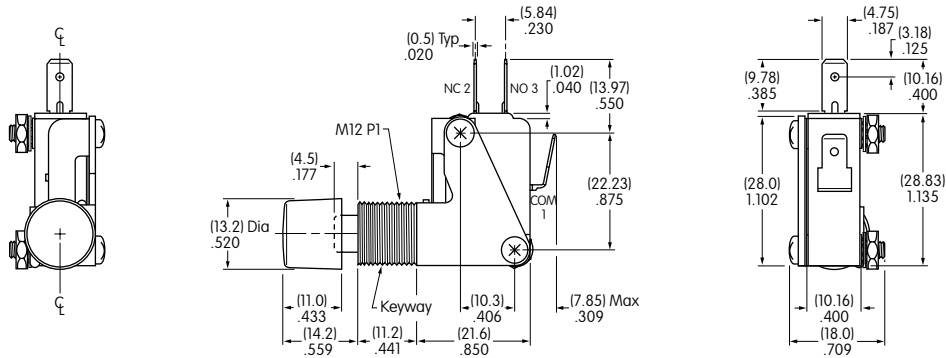


**B** .250" (6.35mm)  
Quick Connect



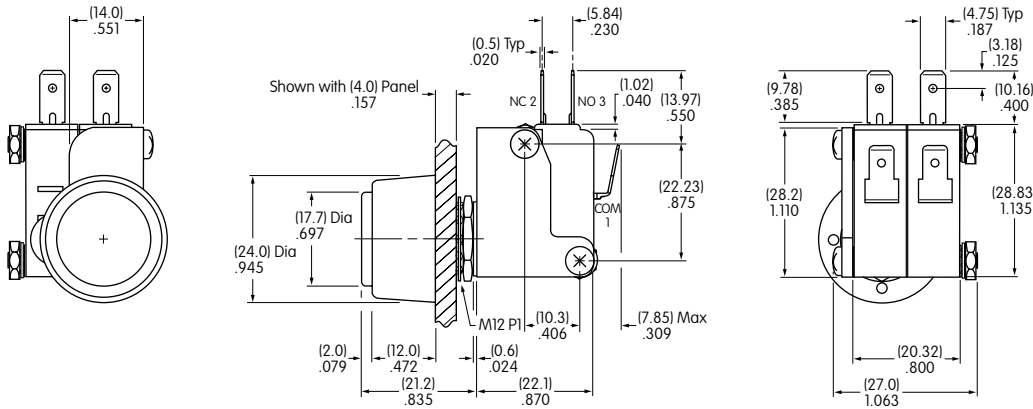
## TYPICAL SWITCH DIMENSIONS

**.520" (13.2mm) Dia. Cap • .187" (4.75mm) Quick Connect**



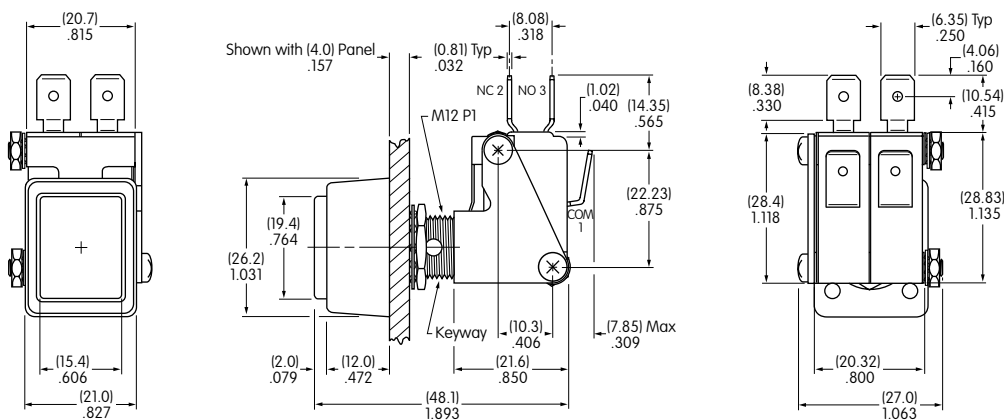
**SCB15S15A-3C**

**Round Cap & Shroud • .187" (4.75mm) Quick Connect**



**SCB25P15A-4CA**

**Rectangular Cap & Shroud • .250" (6.35mm) Quick Connect**



**SCB26S15B-5CA**