

EMC Components

3-Terminal Filters for Signal Line SMD

ACF Series ACF321825, 451832 Types

FEATURES

- The ACF series are T-type EMC filters incorporating ferrite chip beads and multilayer ceramic chip capacitors.
- The external structure consists entirely of ferrite, enabling these parts to achieve superior attenuation characteristics despite their extremely compact dimensions.
- Because they can be mounted on edge, the ACF series are ideal for high-density circuit configurations.
- Available for reflow soldering.
- It is a product conforming to RoHS directive.

PRODUCT IDENTIFICATION

ACF 321825 - 223
(1) (2) (3)

- (1) Series name
- (2) Dimensions
- (3) Capacitance

TEMPERATURE RANGES

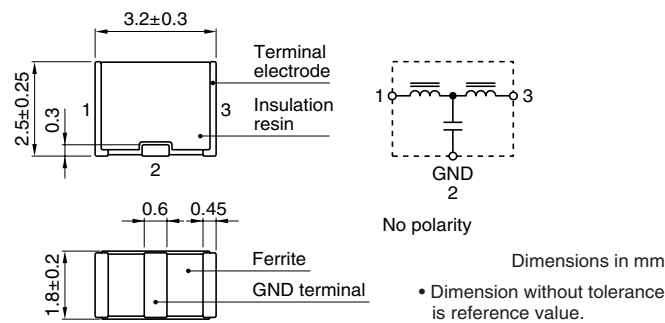
Operating/Storage -25 to +85°C

PACKAGING STYLE AND QUANTITIES

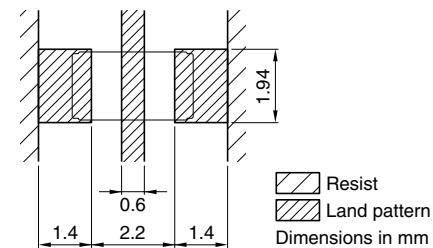
Packaging style Quantity
Taping 1000 pieces/reel

ACF321825 TYPE

SHAPES AND DIMENSIONS/CIRCUIT DIAGRAM



RECOMMENDED PC BOARD PATTERN REFLOW SOLDERING



ELECTRICAL CHARACTERISTICS

Part No.	Maximum attenuation frequency (MHz)	25dB attenuation frequency range (MHz)	Rated voltage Edc (V)max.	Rated current (mA)max.	DC resistance (Ω)max. [Terminal No.1 to 3]	Insulation resistance (MΩ)min. [Terminal No.1 to 2/No.2 to 3]
ACF321825-223	17	11 to 55	20	300	0.15	1000
ACF321825-103	27	17 to 60	20	300	0.15	1000
ACF321825-682	37	22 to 75	20	300	0.15	1000
ACF321825-472	45	30 to 85	20	300	0.15	1000
ACF321825-332	55	37 to 90	20	300	0.15	1000
ACF321825-222	65	45 to 105	20	300	0.15	1000
ACF321825-152	80	60 to 115	20	300	0.15	1000
ACF321825-102	100	80 to 140	20	300	0.15	1000
ACF321825-681	120	95 to 150	20	300	0.15	1000
ACF321825-471	145	120 to 180	20	300	0.15	1000
ACF321825-331	165	130 to 210	20	300	0.15	1000
ACF321825-221	200	170 to 250	20	300	0.15	1000
ACF321825-151	240	205 to 280	20	300	0.15	1000
ACF321825-101	300	265 to 340	20	300	0.15	1000
ACF321825-680	370	340 to 420	20	300	0.15	1000
ACF321825-470	450	420 to 500	20	300	0.15	1000
ACF321825-330	530	500 to 600	20	300	0.15	1000
ACF321825-220	650	600 to 700	20	300	0.15	1000

• Conformity to RoHS Directive: This means that, in conformity with EU Directive 2002/95/EC, lead, cadmium, mercury, hexavalent chromium, and specific bromine-based flame retardants, PBB and PBDE, have not been used, except for exempted applications.

• Please contact our Sales office when your application are considered the following:
The device's failure or malfunction may directly endanger human life (e.g. application for automobile/aircraft/medical/nuclear power devices, etc.)

• All specifications are subject to change without notice.

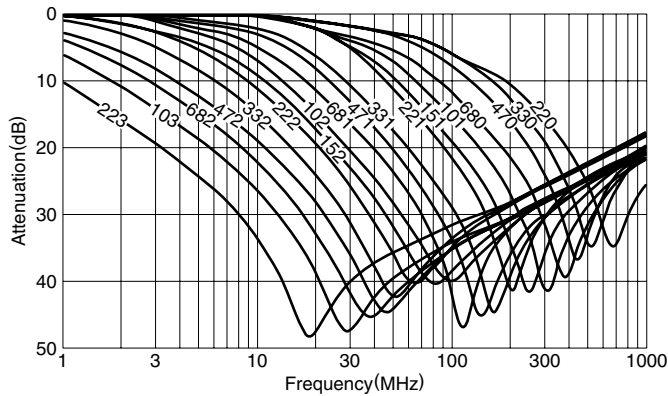
EMC Components

3-Terminal Filters for Signal Line SMD

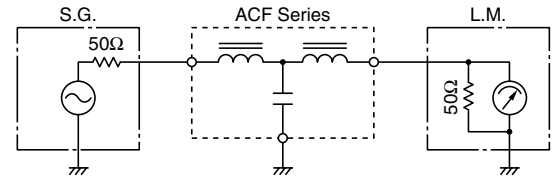
ACF Series ACF321825, 451832 Types

TYPICAL ELECTRICAL CHARACTERISTICS

ATTENUATION vs. FREQUENCY CHARACTERISTICS

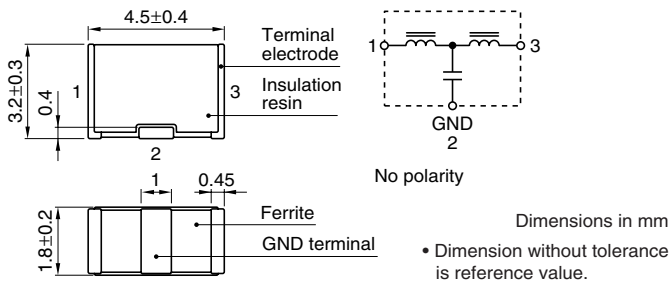


MEASURING CIRCUIT

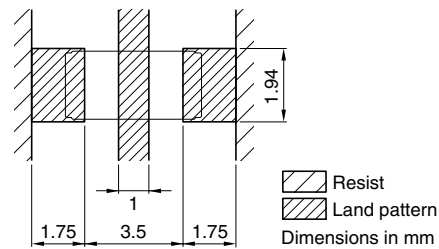


ACF451832 TYPE

SHAPES AND DIMENSIONS/CIRCUIT DIAGRAM



RECOMMENDED PC BOARD PATTERN REFLOW SOLDERING



ELECTRICAL CHARACTERISTICS

Part No.	Maximum attenuation frequency (MHz)	25dB attenuation frequency range (MHz)	Rated voltage E _{dc} (V)max.	Rated current (mA)max.	DC resistance (Ω)max. [Terminal No.1 to 3]	Insulation resistance (MΩ)min. [Terminal No.1 to 2/No.2 to 3]
ACF451832-333	12	7 to 60	50	300	0.15	1000
ACF451832-223	15	9 to 65	50	300	0.15	1000
ACF451832-153	18	11 to 70	50	300	0.15	1000
ACF451832-103	23	15 to 75	50	300	0.15	1000
ACF451832-682	35	20 to 85	50	300	0.15	1000
ACF451832-472	40	25 to 90	50	300	0.15	1000
ACF451832-332	50	35 to 100	50	300	0.15	1000
ACF451832-222	60	40 to 110	50	300	0.15	1000
ACF451832-152	75	50 to 130	50	300	0.15	1000
ACF451832-102	90	65 to 150	50	300	0.15	1000
ACF451832-681	105	75 to 160	50	300	0.15	1000
ACF451832-471	125	95 to 180	50	300	0.15	1000
ACF451832-331	150	115 to 205	50	300	0.15	1000
ACF451832-221	190	150 to 250	50	300	0.15	1000
ACF451832-151	230	190 to 290	50	300	0.15	1000
ACF451832-101	280	235 to 335	50	300	0.15	1000
ACF451832-680	340	295 to 395	50	300	0.15	1000
ACF451832-470	410	360 to 460	50	300	0.15	1000
ACF451832-330	500	450 to 550	50	300	0.15	1000
ACF451832-220	600	550 to 650	50	300	0.15	1000

EMC Components

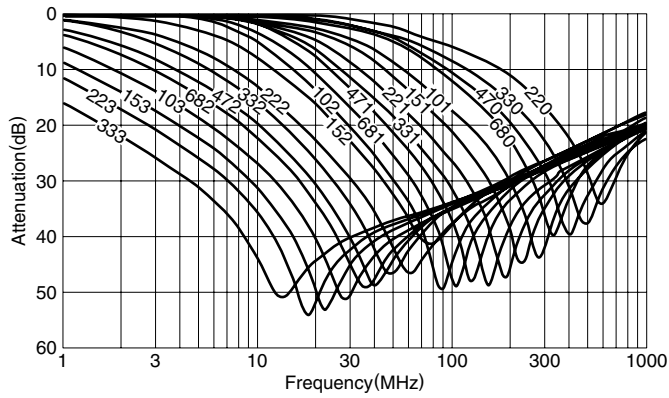
3-Terminal Filters for Signal Line SMD

ACF Series ACF321825, 451832 Types

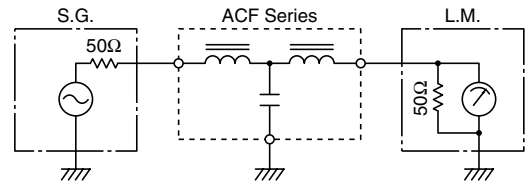
ACF451832 TYPE

TYPICAL ELECTRICAL CHARACTERISTICS

ATTENUATION vs. FREQUENCY CHARACTERISTICS



MEASURING CIRCUIT



Mouser Electronics

Authorized Distributor

Click to View Pricing, Inventory, Delivery & Lifecycle Information:

TDK:

[ACF451832-102-TLD01](#) [ACF451832-103-TLD01](#) [ACF451832-151-TLD01](#) [ACF451832-153-TL](#) [ACF451832-153-TLD01](#) [ACF451832-333-TL](#) [ACF451832-333-TLD01](#) [ACF451832-681-TLD01](#) [ACF451832-101-TD01](#) [ACF451832-103-TD01](#) [ACF451832-102-TD01](#) [ACF451832-220-TD01](#) [ACF451832-222-TD01](#) [ACF451832-223-TD01](#) [ACF451832-221-TD01](#) [ACF451832-471-TD01](#) [ACF451832-472-TD01](#) [ACF451832-470-TD01](#) [ACF451832-333-TD01](#) [ACF451832-332-TD01](#) [ACF451832-331-TD01](#) [ACF451832-330-TD01](#) [ACF451832-151-TD01](#) [ACF451832-153-TD01](#) [ACF451832-152-TD01](#) [ACF321825-220-TD01](#) [ACF321825-222-TD01](#) [ACF321825-221-TD01](#) [ACF321825-223-TD01](#) [ACF321825-472-TD01](#) [ACF321825-470-TD01](#) [ACF321825-471-TD01](#) [ACF451832-681-TD01](#) [ACF321825-152-TD01](#) [ACF321825-151-TD01](#) [ACF321825-330-TD01](#) [ACF321825-332-TD01](#) [ACF321825-331-TD01](#) [ACF451832-680-TD01](#) [ACF451832-682-TD01](#) [ACF321825-103-TD01](#) [ACF321825-102-TD01](#) [ACF321825-101-TD01](#) [ACF321825-680-TD01](#) [ACF321825-682-TD01](#) [ACF321825-681-TD01](#) [ACF451832-101-TLD01](#) [ACF451832-223-TLD01](#) [ACF451832-472-TLD01](#) [ACF451832-332-TLD01](#) [ACF451832-222-TLD01](#) [ACF451832-152-TLD01](#) [ACF451832-471-TLD01](#) [ACF451832-331-TLD01](#) [ACF451832-221-TLD01](#) [ACF451832-680-TLD01](#) [ACF451832-470-TLD01](#) [ACF451832-330-TLD01](#) [ACF451832-220-TLD01](#) [ACF451832-682-TLD01](#)