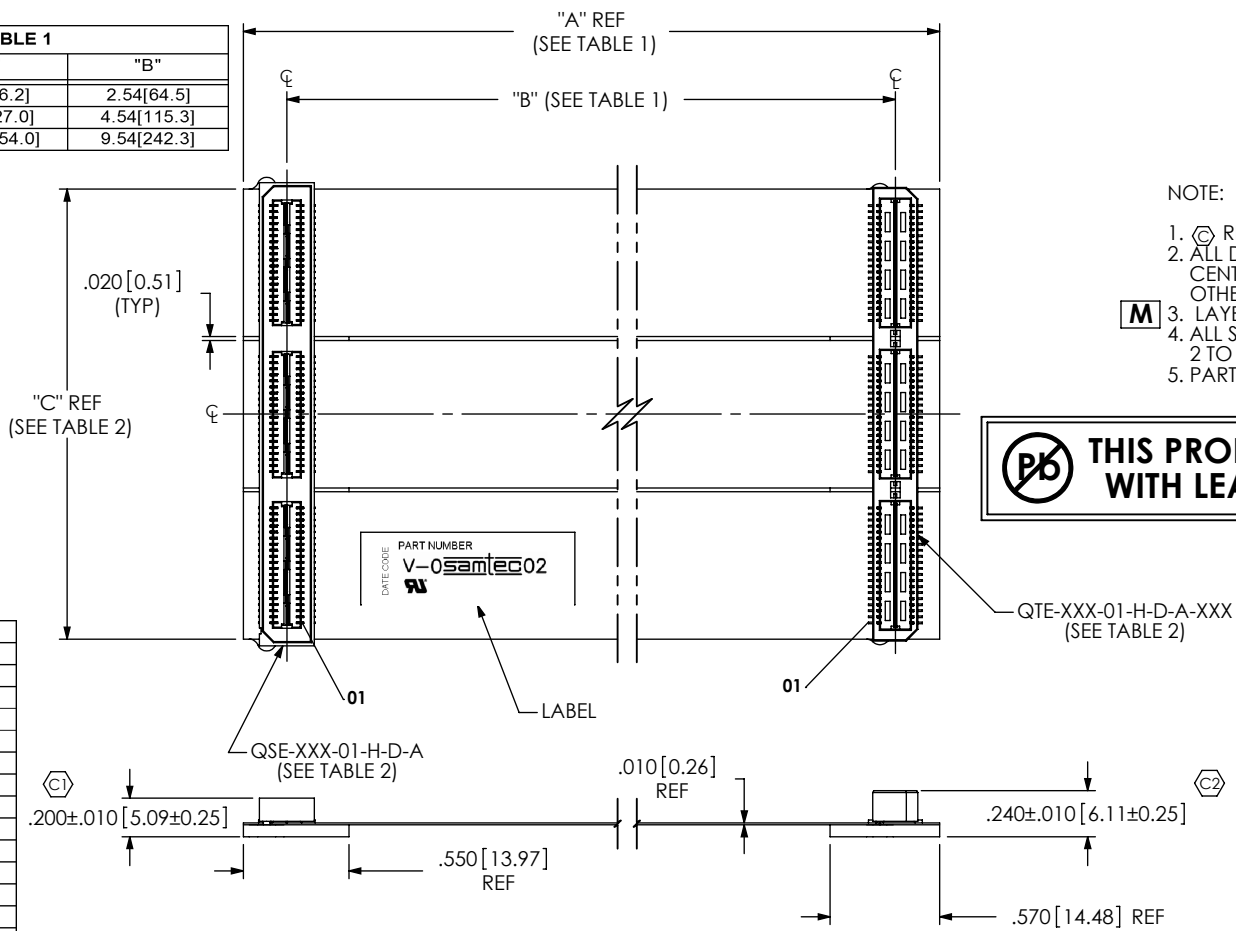


DO NOT SCALE FROM THIS PRINT

		TABLE 2					HFEM2-XXX-T-XX.XX-SE-XXX		
No. OF POS	"C"	"D"	"E"	"F"	"G"	QSE-XXX-01-XD-XXX	QTE-XXX-01-XD-XXX	FLEX	
-020	.768 +/- .010 [19.50 +/- 0.25]	1.0875[27.623]	1.3375[33.973]	1.1285[28.663]	1.1285[28.663]	QSE-020-01-H-D-A OR QSE-020-01-H-D-A-RT1 (FOR -RT1 OPTION)	QTE-020-01-H-D-A OR QTE-020-01-H-D-A-RT1 (FOR -RT1 OPTION)	3", FE-10235 (QTY:1) 5", FE-10236 (QTY:1) 10", FE-10237 (QTY:1)	
-040	1.556 +/- .010 [39.52 +/- 0.25]	1.8755[47.638]	2.1255[53.988]	1.916[40.872]	1.916[40.872]	QSE-040-01-H-D-A OR QSE-040-01-H-D-A-RT1 (FOR -RT1 OPTION)	QTE-040-01-H-D-A OR QTE-040-01-H-D-A-RT1 (FOR -RT1 OPTION)	3", FE-10235 (QTY:2) 5", FE-10236 (QTY:2) 10", FE-10237 (QTY:2)	
-060	2.344 +/- .010 [59.54 +/- 0.25]	2.6635[67.653]	2.9135[74.003]	2.7035[60.875]	2.7035[60.875]	QSE-060-01-H-D-A OR QSE-060-01-H-D-A-RT1 (FOR -RT1 OPTION)	QTE-060-01-H-D-A OR QTE-060-01-H-D-A-RT1 (FOR -RT1 OPTION)	3", FE-10235 (QTY:3) 5", FE-10236 (QTY:3) 10", FE-10237 (QTY:3)	

TABLE 1		
LENGTH	"A"	"B"
-3.00	3.00[76.2]	2.54[64.5]
-5.00	5.00[127.0]	4.54[115.3]
-10.00	10.00[254.0]	9.54[242.3]



THIS PRODUCT MANUFACTURED WITH LEAD-FREE PROCESSING

- NOTE:
- *=NOT TOOLED
 - 1. C REPRESENTS A CRITICAL DIMENSION.
 - 2. ALL DIMENSIONS TO BE SYMMETRICAL ABOUT CENTERLINE WITHIN ±.002[0.05] UNLESS OTHERWISE STATED.
 - 3. LAYER PACKAGE IN PAWPAK WITH FOAM.
 - 4. ALL SIGNALS ROUTED PIN TO PIN, E.G. 1 TO 1, 2 TO 2, ETC.
 - 5. PARTS TO BE RoHS COMPLIANT

FIG. 1
HFEM2-060-T-10.00-SE SHOWN

TABLE 3 (FOR FLEX MANUFACTURING REFERENCE)	
PART NUMBER	FE NUMBER
HFEM2-020-T-03.00-SE	FE-10238
HFEM2-020-T-03.00-SE-MH	FE-10239
HFEM2-020-T-03.00-SE-RT1	FE-10383
HFEM2-040-T-03.00-SE	FE-10240
HFEM2-040-T-03.00-SE-MH	FE-10241
HFEM2-040-T-03.00-SE-RT1	FE-10384
HFEM2-060-T-03.00-SE	FE-10242
HFEM2-060-T-03.00-SE-MH	FE-10243
HFEM2-060-T-03.00-SE-RT1	FE-10385
HFEM2-020-T-05.00-SE	FE-10244
HFEM2-020-T-05.00-SE-MH	FE-10245
HFEM2-020-T-05.00-SE-RT1	FE-10386
HFEM2-040-T-05.00-SE	FE-10246
HFEM2-040-T-05.00-SE-MH	FE-10247
HFEM2-040-T-05.00-SE-RT1	FE-10387
HFEM2-060-T-05.00-SE	FE-10248
HFEM2-060-T-05.00-SE-MH	FE-10249
HFEM2-060-T-05.00-SE-RT1	FE-10388
HFEM2-020-T-10.00-SE	FE-10250
HFEM2-020-T-10.00-SE-MH	FE-10251
HFEM2-020-T-10.00-SE-RT1	FE-10389
HFEM2-040-T-10.00-SE	FE-10252
HFEM2-040-T-10.00-SE-MH	FE-10253
HFEM2-040-T-10.00-SE-RT1	FE-10390
HFEM2-060-T-10.00-SE	FE-10254
HFEM2-060-T-10.00-SE-MH	FE-10255
HFEM2-060-T-10.00-SE-RT1	FE-10391

c:\enterprisevault\DWG\MISC\MKTG\HFEM2-XXX-T-XX.XX-SE-XXX-MKT.SLDDRW

UNLESS OTHERWISE SPECIFIED, DIMENSIONS ARE IN INCHES. TOLERANCES ARE:
 DECIMALS ANGLES
 .XX: ±.01 [.3] 2°
 .XXX: ±.005 [.13]
 .XXXX: ±.0020 [.051]

PROPRIETARY NOTE
 THIS DOCUMENT CONTAINS INFORMATION CONFIDENTIAL AND PROPRIETARY TO SAMTEC, INC. AND SHALL NOT BE REPRODUCED OR TRANSFERRED TO OTHER DOCUMENTS OR DISCLOSED TO OTHERS OR USED FOR ANY PURPOSE OTHER THAN THAT WHICH IT WAS OBTAINED WITHOUT THE EXPRESSED WRITTEN CONSENT OF SAMTEC, INC.

CONNECTOR MATERIALS:
 INSULATORS: LCP
 CONTACTS, TERMINALS, & GROUND PLANES: PHOS BRONZE
 FLEX MATERIALS:
 SEE CROSS SECTION DETAIL

DO NOT SCALE DRAWING SHEET SCALE: 1:1

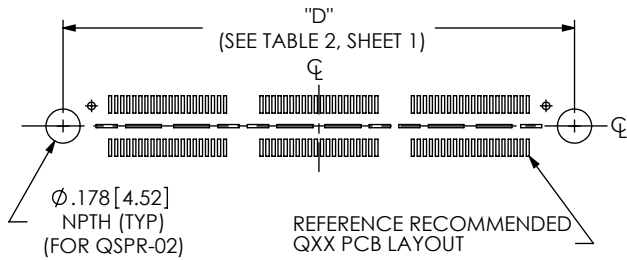
520 PARK EAST BLVD. NEW ALBANY, IN 47150
 PHONE: 812-944-6733 FAX: 812-948-5047
 e-Mail: info@SAMTEC.com code: 55322

DESCRIPTION:
HIGH SPEED FLEX 0.8mm ASSEMBLY

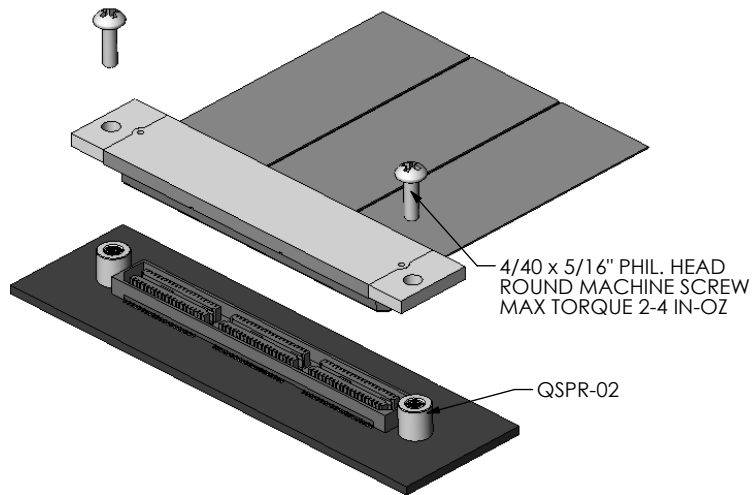
DWG. NO.
HFEM2-XXX-T-XX.XX-SE-XXX

BY: J CUMMINGS 12/27/2004 SHEET 1 OF 4

RECOMMENDED LAYOUT FOR -MH SCREW DOWN OPTIONS



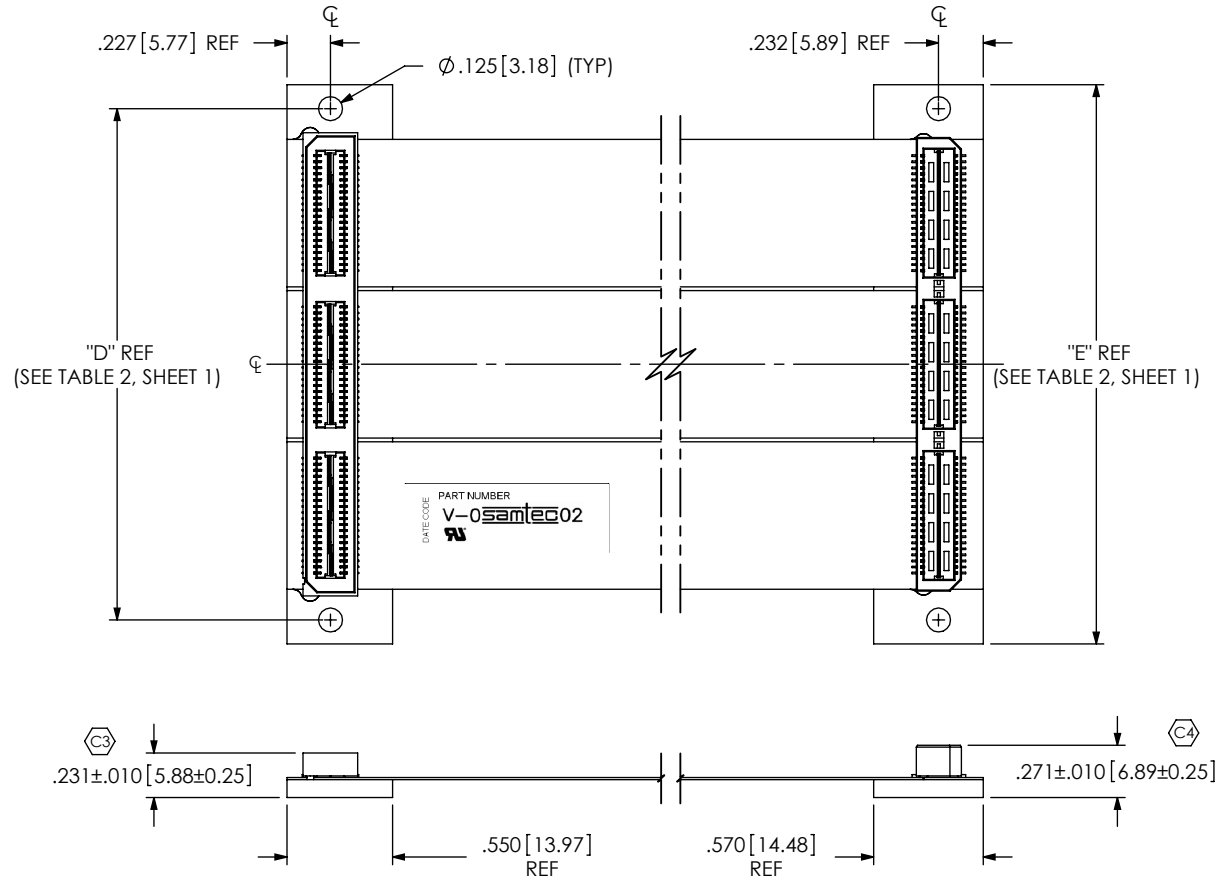
SCREW DOWN APPLICATION VIEW



COVERFILM		.002[0.05] POLYIMIDE .001[0.03] ADHESIVE
COPPER CLAD		1/2 oz COPPER .001 [0.03] ADHESIVE .001 [0.03] POLYIMIDE .001 [0.03] ADHESIVE 1/2 oz COPPER
COVERFILM		.001 [0.03] ADHESIVE .002[0.05] POLYIMIDE
ADHESIVE		.001 [0.03] ADHESIVE
STIFFENER		STANDARD: .062[1.57] FR4 -MH OPTION: .093[2.36] FR4 -RT1 OPTION: .093[2.36] FR4

CROSS SECTION OF FLEX & STIFFENER
NOT TO SCALE

FIG. 2
-MH OPTION
(SAME AS FIG. 1, UNLESS OTHERWISE STATED)
HFEM2-060-T-10.00-SE-MH SHOWN



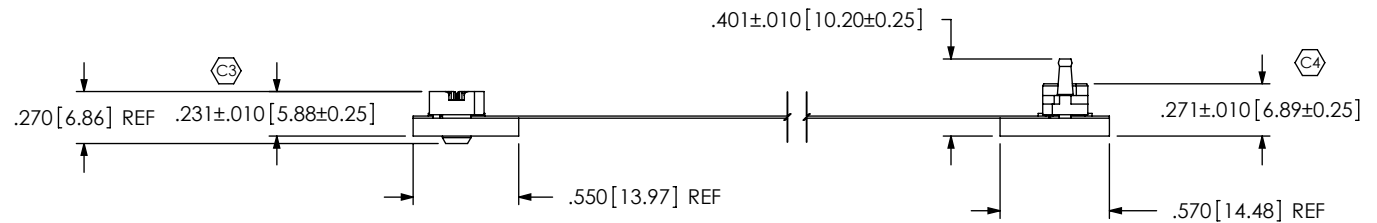
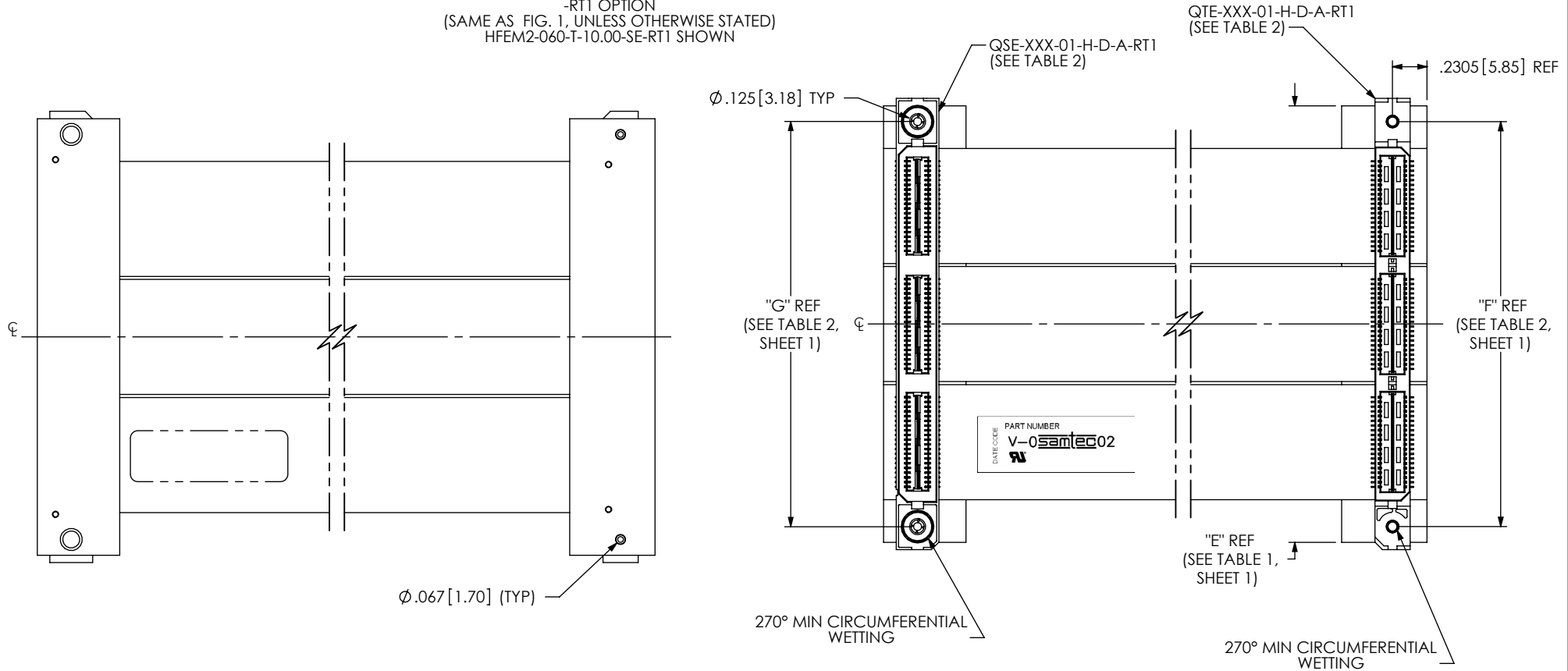
PROPRIETARY NOTE
THIS DOCUMENT CONTAINS INFORMATION
CONFIDENTIAL AND PROPRIETARY TO
SAMTEC, INC. AND SHALL NOT BE REPRODUCED
OR TRANSFERRED TO OTHER DOCUMENTS OR
DISCLOSED TO OTHERS OR USED FOR ANY
PURPOSE OTHER THAN THAT WHICH IT WAS
OBTAINED WITHOUT THE EXPRESSED WRITTEN
CONSENT OF SAMTEC, INC.

samtec
520 PARK EAST BLVD, NEW ALBANY, IN 47150
PHONE: 812-944-6733 FAX: 812-948-5047
e-Mail: info@SAMTEC.com code: 55322

DO NOT SCALE DRAWING
SHEET SCALE: 1:1

DESCRIPTION:
HIGH SPEED FLEX 0.8mm ASSEMBLY
DWG. NO.
HFEM2-XXX-T-XX.XX-SE-XXX
BY: J CUMMINGS 12/27/2004 SHEET 2 OF 4

FIG. 3
 -RT1 OPTION
 (SAME AS FIG. 1, UNLESS OTHERWISE STATED)
 HFEM2-060-T-10.00-SE-RT1 SHOWN



PROPRIETARY NOTE
 THIS DOCUMENT CONTAINS INFORMATION
 CONFIDENTIAL AND PROPRIETARY TO
 SAMTEC, INC. AND SHALL NOT BE REPRODUCED
 OR TRANSFERRED TO OTHER DOCUMENTS OR
 DISCLOSED TO OTHERS OR USED FOR ANY
 PURPOSE OTHER THAN THAT WHICH IT WAS
 OBTAINED WITHOUT THE EXPRESSED WRITTEN
 CONSENT OF SAMTEC, INC.

DO NOT SCALE DRAWING
 SHEET SCALE: 1:1

samtec
 520 PARK EAST BLVD, NEW ALBANY, IN 47150
 PHONE: 812-944-6733 FAX: 812-948-5047
 e-Mail: info@SAMTEC.com code: 55322

DESCRIPTION:
 HIGH SPEED FLEX 0.8mm ASSEMBLY
 DWG. NO.
 HFEM2-XXX-T-XX.XX-SE-XXX

BY: J CUMMINGS 12/27/2004 SHEET 3 OF 4

-20 Shown. -40 and -60 repeat same pattern.

J1 Pin	Signal	J2 Pin
1	S	1
2	S	2
3	S	3
4	S	4
5	S	5
6	S	6
7	S	7
8	S	8
9	S	9
10	S	10
11	S	11
12	S	12
13	S	13
14	S	14
15	S	15
16	S	16
17	S	17
18	S	18
19	S	19
20	S	20
21	S	21
22	S	22
23	S	23
24	S	24
25	S	25
26	S	26
27	S	27
28	S	28
29	S	29
30	S	30
31	S	31
32	S	32
33	S	33
34	S	34
35	S	35
36	S	36
37	S	37
38	S	38
39	S	39
40	S	40

PROPRIETARY NOTE
 THIS DOCUMENT CONTAINS INFORMATION CONFIDENTIAL AND PROPRIETARY TO SAMTEC, INC. AND SHALL NOT BE REPRODUCED OR TRANSFERRED TO OTHER DOCUMENTS OR DISCLOSED TO OTHERS OR USED FOR ANY PURPOSE OTHER THAN THAT WHICH IT WAS OBTAINED WITHOUT THE EXPRESSED WRITTEN CONSENT OF SAMTEC, INC.

DO NOT SCALE DRAWING

SHEET SCALE: 1:1

	
520 PARK EAST BLVD, NEW ALBANY, IN 47150 PHONE: 812-944-6733 FAX: 812-948-5047 e-Mail: info@SAMTEC.com code: 55322	
DESCRIPTION:	
HIGH SPEED FLEX 0.8mm ASSEMBLY	
DWG. NO.	
HFEM2-XXX-T-XX.XX-SE-XXX	
BY: J CUMMING	2/27/2004
SHEET 4 OF 4	