

Miniature Surface Mount Transfer Switches



RLC Electronics' miniature surface mount transfer switch combines high performance in a compact configuration. The switch provides extremely high reliability, long life, and excellent electrical performance characteristics in a mini-

ature package. The power consumption is less than half that of the miniature connectorized switches. The switch is available with a choice of four different operating frequencies and three coil voltages.

SR-Tmin-min-¹⁻²⁻³

Switch Type	TRANSFER			
Frequency (GHz)	DC-2.0	2.0-5.0	5.0-12.4	12.4-18.0
Insertion Loss (dB Max)	0.2	0.3	0.4	0.7
VSWR (Max)	1.3	1.4	1.5	1.7
Isolation (dB Min)	70	60	50	40

Power Rating, RF Cold Switching: See page 5.

Impedance: 50 ohms

Operating Power 25 deg C (mA nominal):

(Failsafe): 5 vdc at 440 mA
 12 vdc at 185 mA, 28 vdc at 108 mA
 (Latching): 5 vdc at 500 mA
 12 vdc at 210 mA, 28 vdc at 122 mA

Connectors, RF and Power: .018 DIA. Pins

Life: 1,000,000 operations

Switching Time: 15 milliseconds max.

Weight: .7 oz.

Environmental Conditions: MIL-DTL-3928

Operating Mode: Failsafe or latching.

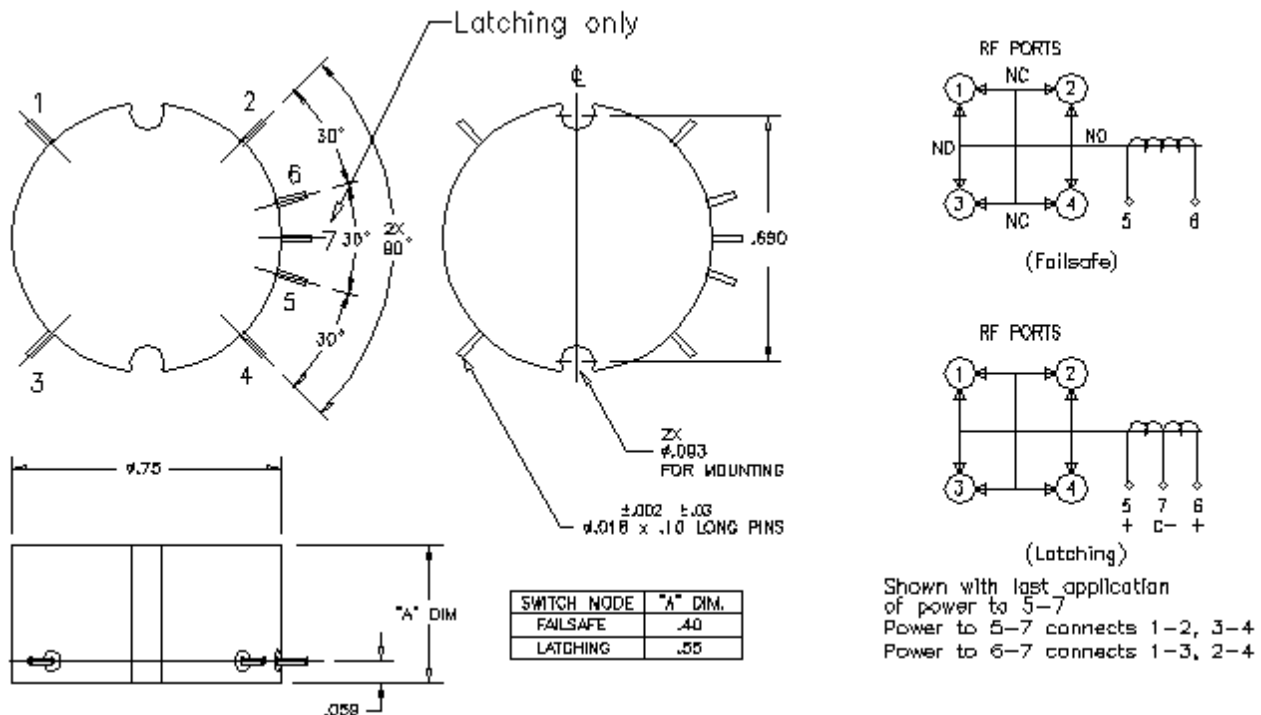
Switching Sequence: Break before make

To designate the switch desired use:

- (1) "E" for 5 volt coil
- "H" for 12 - 15 volt coil
- "D" for 24 - 28 volt coil

- (2) "2" for DC - 2 GHz, "5" for DC - 5GHz
- "12" for DC - 12.4 GHz, "18" for DC - 18 GHz
- (3) "L" for pulse latching if desired

Example: SR-Tmin-min-D-2 is a Transfer, 24-28 vdc, DC-2 GHz, failsafe switch



Specifications subject to change without notification.

Tolerances unless otherwise specified are .xx +/- .02, xxx +/- .005

Specials requiring closer tolerances, different frequency ranges, special connectors, different materials, finishes, etc. can be furnished upon request.



RLC ELECTRONICS, INC.

83 Radio Circle, Mount Kisco, New York 10549 Telephone 914-241-1334 Fax 914-241-1753
 e-mail: sales@rlcelectronics.com www.rlcelectronics.com