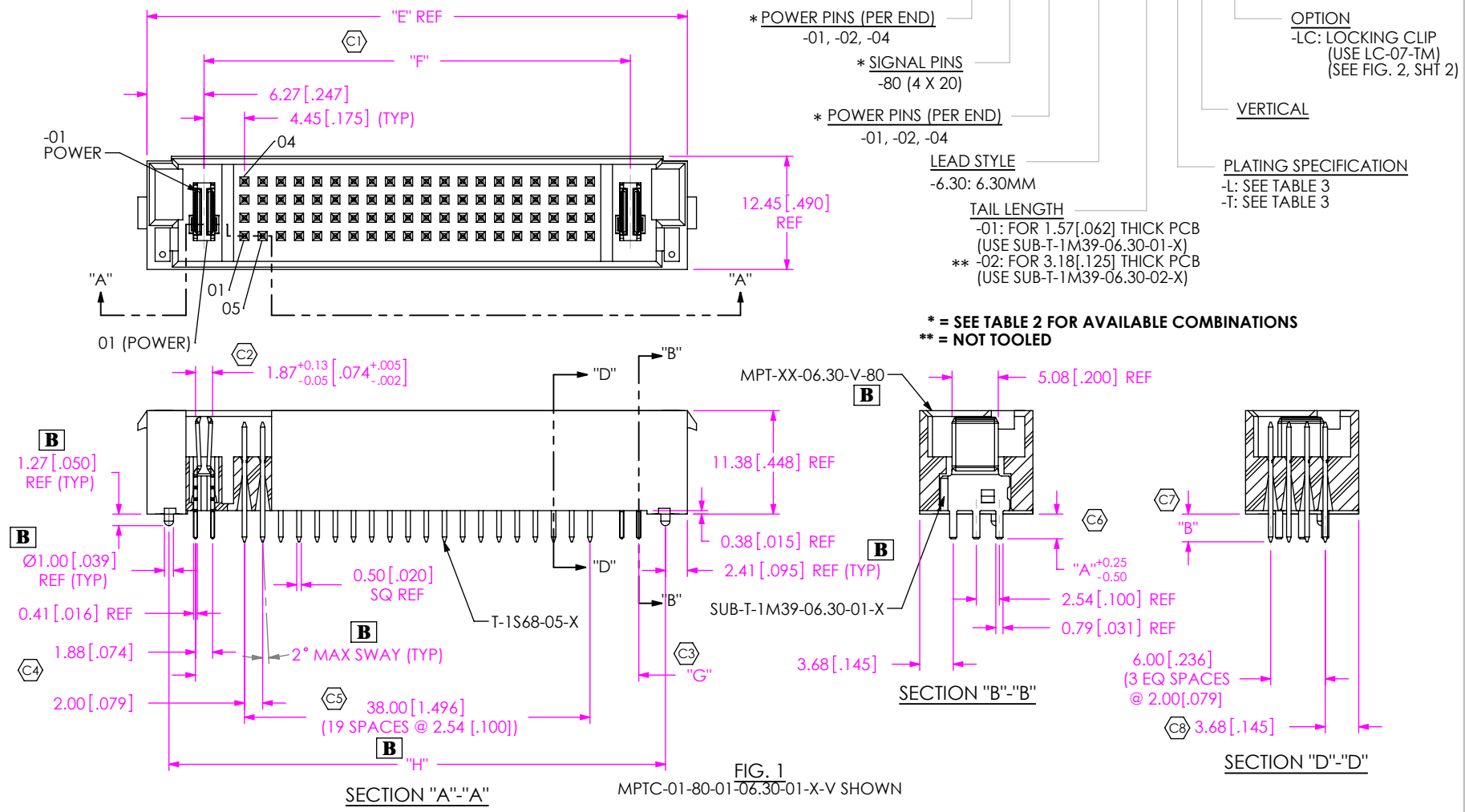


**DESIGNED & DIMENSIONED  
IN MILLIMETERS**

**MPTC-XX-XX-XX-6.30-XX-X-V-XX**

DO NOT  
SCALE FROM  
THIS PRINT



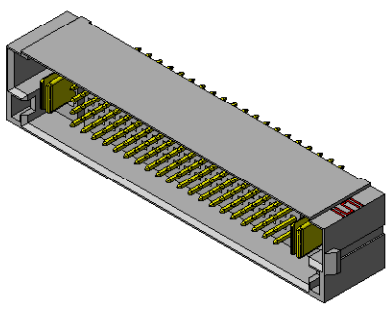
**TABLE 1**

PART NUMBER	POWER TERMINAL SUB-ASSEMBLY	SIGNAL TERMINAL	"A"	"B"
MPTC-XX-XX-XX-06.30-01-X-V-XX	SUB-T-1M39-06.30-01-X	T-1S68-05-X	2.72 [0.107]	3.05 [0.120]
** MPTC-XX-XX-XX-06.30-02-X-V-XX	SUB-T-1M39-06.30-02-X	T-1S68-09-X	4.32 [0.170]	4.66 [0.183]

**\*\* = NOT TOOLED**

**NOTES:**

1.  $\text{\textcircled{C}}$  REPRESENTS A CRITICAL DIMENSION.
2. BURR ALLOWANCE: 0.038[.0015] MAX.
3. MINIMUM PUSHOUT FORCE: 2.22N [.5 LB].
4. PARTS TO BE PACKAGED IN TRAYS.
5. BOW ALLOWED AT 0.002 MM/MM [.002 IN/IN]



UNLESS OTHERWISE SPECIFIED,  
DIMENSIONS ARE IN MILLIMETERS.

TOLERANCES ARE:

DECIMALS ANGLES  
.X:  $\pm 0.3$  [.01] 2°  
.XX:  $\pm 0.13$  [.005]  
.XXX:  $\pm 0.051$  [.0020]

**PROPRIETARY NOTE**  
THIS DOCUMENT CONTAINS INFORMATION  
CONFIDENTIAL AND PROPRIETARY TO  
SAMTEC, INC. AND SHALL NOT BE REPRODUCED  
OR TRANSFERRED TO OTHER DOCUMENTS OR  
DISCLOSED TO OTHERS OR USED FOR ANY  
PURPOSE OTHER THAN THAT WHICH IT WAS  
OBTAINED WITHOUT THE EXPRESSED WRITTEN  
CONSENT OF SAMTEC, INC.

**samtec**

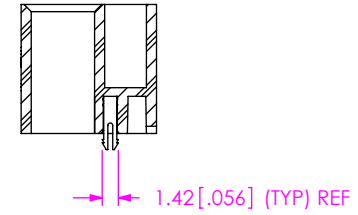
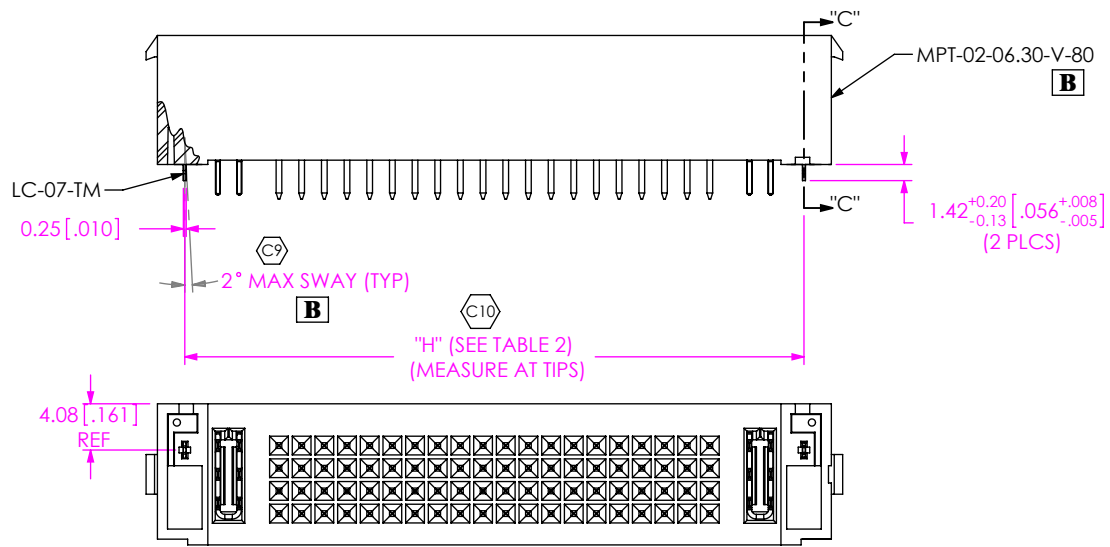
520 PARK EAST BLVD, NEW ALBANY, IN 47150  
PHONE: 812-944-6733 FAX: 812-948-5047  
e-Mail: info@SAMTEC.com code: 55322

**MATERIAL:** DO NOT SCALE DRAWING SHEET SCALE: 1:0.666667  
INSULATOR: LCP, COLOR: BLACK  
TERMINAL: COPPER ALLOY  
SIGNAL PIN: PHOS BRONZE

**DESCRIPTION:**  
VERTICAL POWER TERMINAL

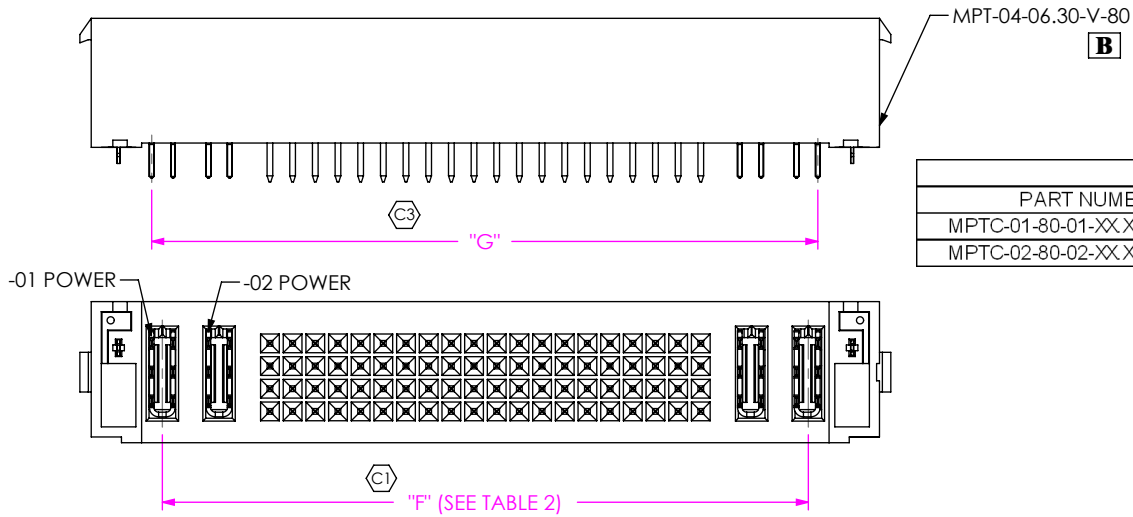
DWG. NO.  
**MPTC-XX-XX-XX-6.30-XX-X-V-XX**

BY: CLAY W 2/2/2007 SHEET 1 OF 2



SECTION "C"- "C"

FIG. 2  
MPTC-01-80-01-06.30-01-X-V-LC SHOWN  
(SAME AS FIG. 1, UNLESS OTHERWISE STATED)



PART NUMBER	BODY	"E"	"F"	"G"	"H"
MPTC-01-80-01-XX-XX-XX-X-V-XX	MPT-02-06.30-V-80	59.44 [2.340]	46.89 [1.846]	48.77 [1.920]	54.61 [2.150]
MPTC-02-80-02-XX-XX-XX-X-V-XX	MPT-04-06.30-V-80	69.44 [2.734]	56.89 [2.240]	58.77 [2.314]	64.61 [2.544]

**B**

**B**

FIG. 3  
MPTC-02-80-02-06.30-01-X-V-LC SHOWN  
(SAME AS FIG. 1, UNLESS OTHERWISE STATED)

PLATING	POWER PIN CONTACT AREA	POWER PIN TAIL	SIGNAL PIN CONTACT AREA	SIGNAL PIN TAIL
-L	LIGHT GOLD	MATTE TIN	LIGHT GOLD	MATTE TIN
-T	MATTE TIN	MATTE TIN	LIGHT GOLD	MATTE TIN

PROPRIETARY NOTE  
THIS DOCUMENT CONTAINS INFORMATION  
CONFIDENTIAL AND PROPRIETARY TO  
SAMTEC, INC. AND SHALL NOT BE REPRODUCED  
OR TRANSFERRED TO OTHER DOCUMENTS OR  
DISCLOSED TO OTHERS OR USED FOR ANY  
PURPOSE OTHER THAN THAT WHICH IT WAS  
OBTAINED WITHOUT THE EXPRESSED WRITTEN  
CONSENT OF SAMTEC, INC.

DO NOT SCALE DRAWING

SHEET SCALE: 1.5:1

**samtec**

520 PARK EAST BLVD, NEW ALBANY, IN 47150  
PHONE: 812-944-6733 FAX: 812-948-5047  
e-Mail: info@SAMTEC.com code: 55322

DESCRIPTION:  
VERTICAL POWER TERMINAL

DWG. NO.  
MPTC-XX-XX-XX-6.30-XX-X-V-XX

BY: CLAY W 2/2/2007 SHEET 2 OF 2