

SMA Male Plug to SSMA Male Plug

Model Number

ADT-2695-SM-SSM-02

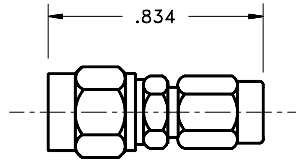
SPECIFICATIONS

Frequency: DC - 25.0 GHz

VSWR: 1.06 + .009 f (GHz) @ DC-12.4 GHz
1.05 + .01 f (GHz) @ 12.4-25.0 GHz

Impedance: 50 Ohms

Finish: Passivated Stainless Steel



SMA Male Plug to SSMA Female Jack

Model Number

ADT-2696-SM-SSF-02

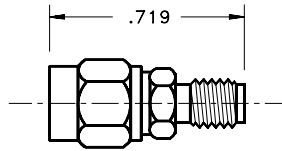
SPECIFICATIONS

Frequency: DC - 25.0 GHz

VSWR: 1.06 + .009 f (GHz) @ DC-12.4 GHz
1.05 + .01 f (GHz) @ 12.4-25.0 GHz

Impedance: 50 Ohms

Finish: Passivated Stainless Steel



SMA Female Jack to SSMA Male Plug

Model Number

ADT-2697-SF-SSM-02

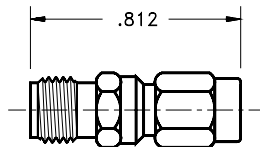
SPECIFICATIONS

Frequency: DC - 25.0 GHz

VSWR: 1.06 + .009 f (GHz) @ DC-12.4 GHz
1.05 + .01 f (GHz) @ 12.4-25.0 GHz

Impedance: 50 Ohms

Finish: Passivated Stainless Steel



SMA Female Jack to SSMA Female Jack

Model Number

ADT-2698-SF-SSF-02

SPECIFICATIONS

Frequency: DC - 25.0 GHz

VSWR: 1.06 + .009 f (GHz) @ DC-12.4 GHz
1.05 + .01 f (GHz) @ 12.4-25.0 GHz

Impedance: 50 Ohms

Finish: Passivated Stainless Steel

