

Description

The AMS4558 consists of two low noise, high performance operational amplifiers. It is specially suitable for applications in differential-in, differential-out as well as in industrial measurement tools and applications where gain and phase matched channels are mandatory.

The IC features monolithic silicon chip, internal frequency compensation, low noise, low distortion, wide operating voltage range, high gain and high bandwidth. The AMS4558 can operate under dual power supply voltage up to $\pm 18V$ or single power supply up to 36V.

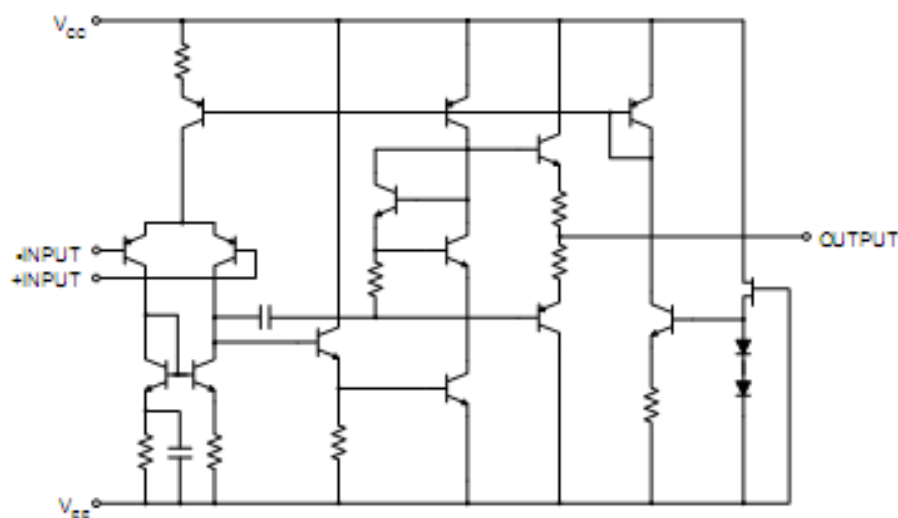
Features

- ✧ Operating voltage: $\pm 3V \sim \pm 18V$.
- ✧ Large DC voltage gain: 100 dB
- ✧ Low input noise voltage: $1\mu VRMS$
- ✧ Wide gain bandwidth product: 5 MHz
- ✧ Slew rate: $2V/\mu s$
- ✧ Package outline: DIP8, SOIC8

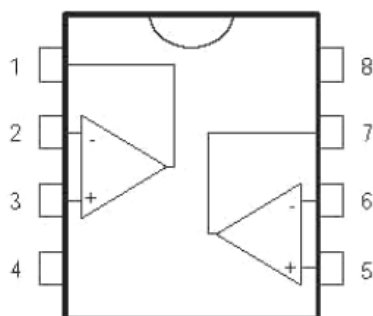
Applications

- ✧ Audio AC-3 decoded system.
- ✧ Audio amplifier

Functional Diagram



Pin Description



Symbol	Pin NO.	Description
OUT1	1	Output 1
IN1-	2	Inverting input1
IN1+	3	Non- Inverting input1
V-	4	VEE
IN2+	5	Non- Inverting input2
IN2-	6	Inverting input2
OUT2	7	Output 2
V+	8	VCC

Absolute Maximum Ratings

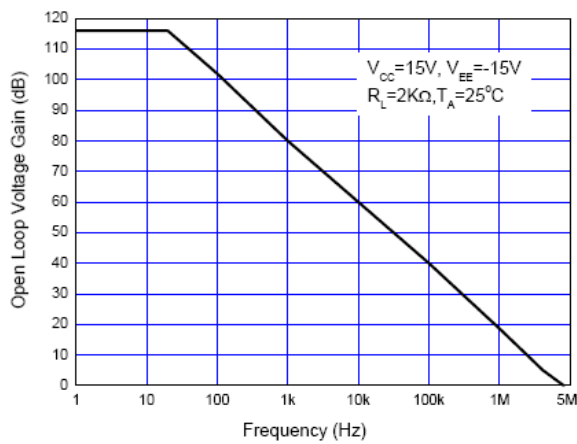
Parameter	Symbol	Value		Unit
Power Supply Voltage	VCC	+18		V
	VEE	-18		
Differential Input Voltage	V _{ID}	± 30		V
Input Voltage	V _{IC}	± 15		V
Power Dissipation	P _D	DIP	500	mW
		SOIC	250	
Operating Temperature Range	T _{OP}	- 40 to 85		°C
Storage Temperature Range	T _{STG}	- 60 to 150		°C

Electrical Characteristics ($V_{CC}=+15V, V_{EE}=-15V, T_A=25^{\circ}C$ unless otherwise specified)

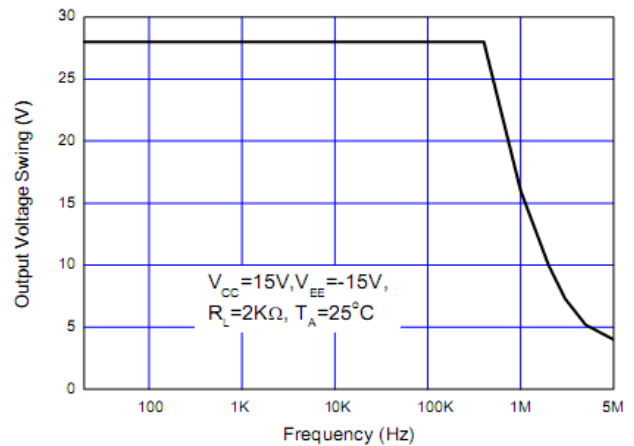
Parameter	Conditions	Min	Typ	Max	Unit
Input Offset Voltage	$R_S \leq 10K\Omega$	-	2	6	mV
Input bias Current		-	60	500	nA
Input Offset Current		-	5	200	nA
Supply Current		-	3.5	5.8	mA
Large Signal Voltage Gain	$R_L \geq 2K\Omega, V_o = \pm 10V$	85	100	-	dB
Common Mode Rejection Ratio	$R_S \leq 10K\Omega$	70	90	-	dB
Power Supply Rejection Ratio	$R_S \leq 10K\Omega$	70	90	-	dB
Output Voltage Swing	$R_L \geq 2K\Omega$	± 10	± 13	-	V
	$R_L \geq 10K\Omega$	± 12	± 14	-	
Output Sink Current	$V_- = 1V, V_+ = 0V, V_o = 2V$		40		mA
Output Source Current	$V_- = 1V, V_+ = 0V, V_o = 2V$		40		mA
Slew Rate		-	2	-	V/ μ S
Equivalent Input Noise Voltage	RIAA, $R_S = 1K\Omega$, 30kHz LPF	-	1	-	μ VRMS
Gain Bandwidth Product	$f = 10KHz$	-	5	-	MHz



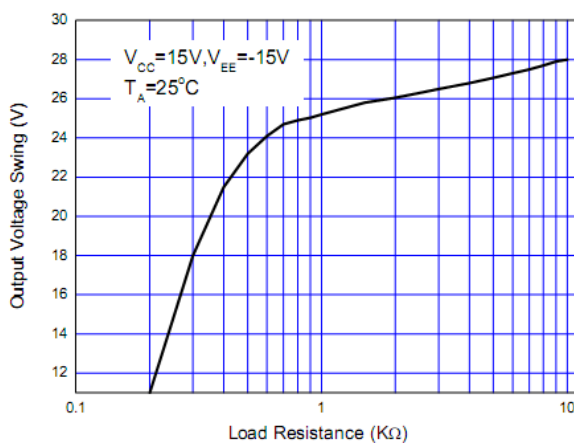
Typical Performance Characteristics



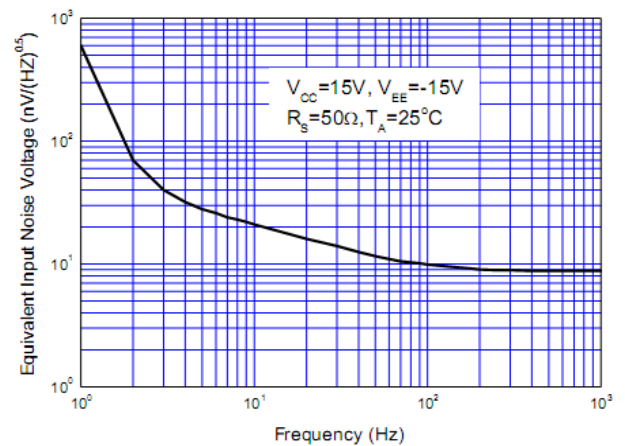
Open Loop Voltage Gain vs. Frequency



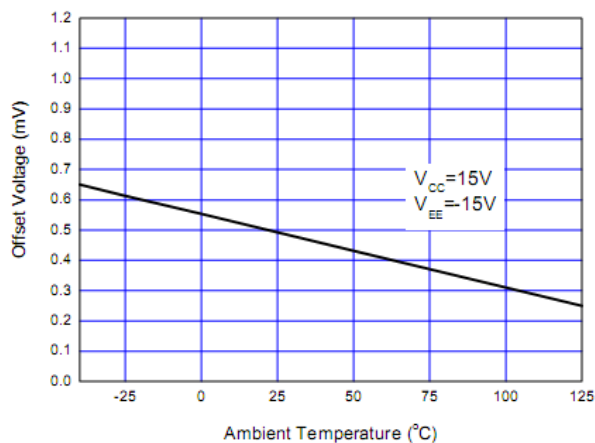
Maximum Output Voltage Swing vs. Frequency



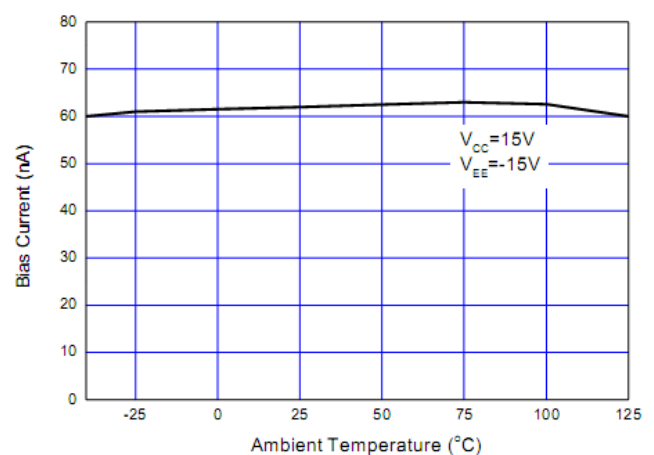
Maximum Output Voltage Swing vs. Load Resistance



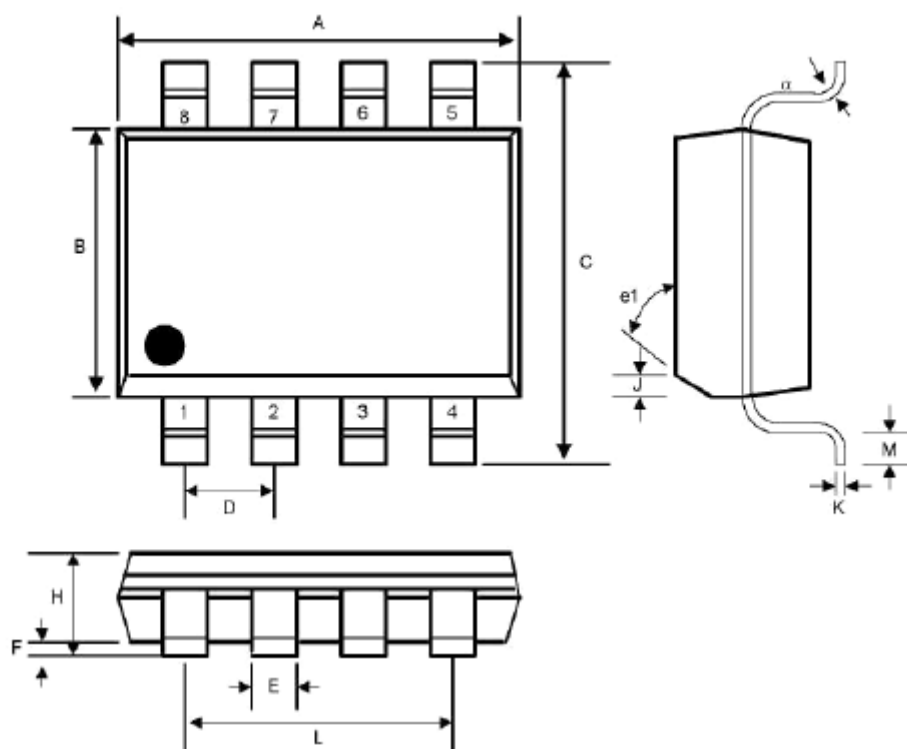
Equivalent Input Noise Voltage vs. Frequency



Input Offset Voltage vs. Temperature

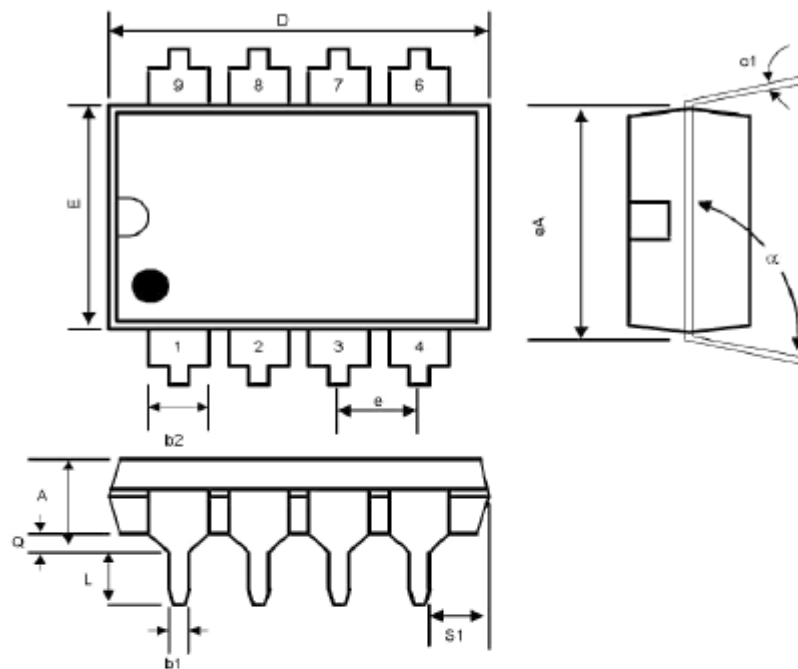


Input Bias Current vs. Temperature

PACKAGE DESCRIPTION
SOP8 PACKAGE OUTLINE DIMENSIONS


SYMBOL	INCHES		MILLIMETERS		NOTES
	MIN	MAX	MIN	MAX	
A	0.188	0.197	4.80	5.00	-
B	0.149	0.158	3.80	4.00	-
C	0.228	0.244	5.80	6.20	-
D	0.050	BSC	1.27	BSC	-
E	0.013	0.020	0.33	0.51	-
F	0.004	0.010	0.10	0.25	-
H	0.053	0.069	1.35	1.75	-
J	0.011	0.019	0.28	0.48	-
K	0.007	0.010	0.19	0.25	-
M	0.016	0.050	0.40	1.27	-
L	0.150	REF	3.81	REF	-
α1	45°		45°		-
α	0°	8°	0°	8°	-

DIP8 PACKAGE OUTLINE DIMENSIONS



SYMBOL	INCHES		MILLIMETERS		NOTES
	MIN	MAX	MIN	MAX	
A	-	0.200	-	5.08	-
b1	0.014	0.023	0.36	0.58	-
b2	0.045	0.065	1.14	1.65	-
c1	0.008	0.015	0.20	0.38	-
D	0.355	0.400	9.02	10.16	-
E	0.220	0.310	5.59	7.87	-
e	0.100 BSC		2.54 BSC		-
eA	0.300 BSC		7.62 BSC		-
L	0.125	0.200	3.18	5.08	-
Q	0.015	0.060	0.38	1.52	-
s1	0.005	-	0.13	-	-
α	90 ⁰	105 ⁰	90 ⁰	105 ⁰	-



Disclaimer:

- AMS reserves the right to make changes to the information herein for the improvement of the design and performance without further notice! Customers should obtain the latest relevant information before placing orders and should verify that such information is complete and current.
- All semiconductor products malfunction or fail with some probability under special conditions. When using AMS products in system design or complete machine manufacturing, it is the responsibility of the buyer to comply with the safety standards strictly and take essential measures to avoid situations in which a malfunction or failure of such AMS products could cause loss of body injury or damage to property.
- AMS will supply the best possible product for customers!