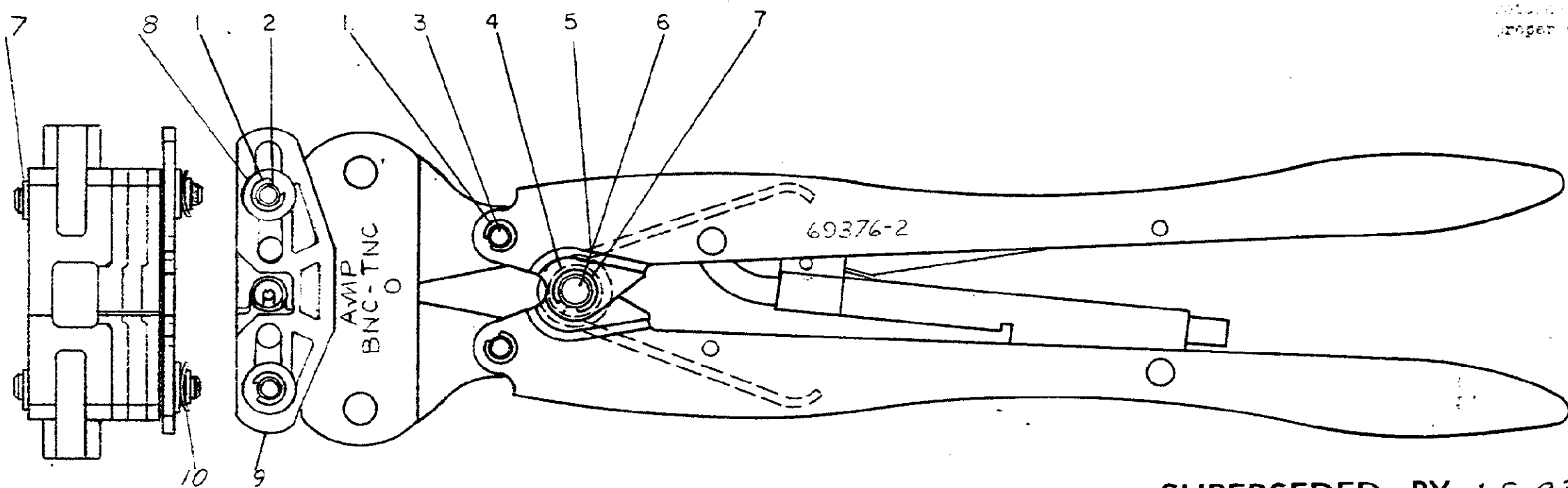


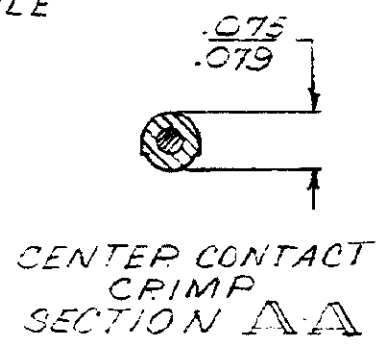
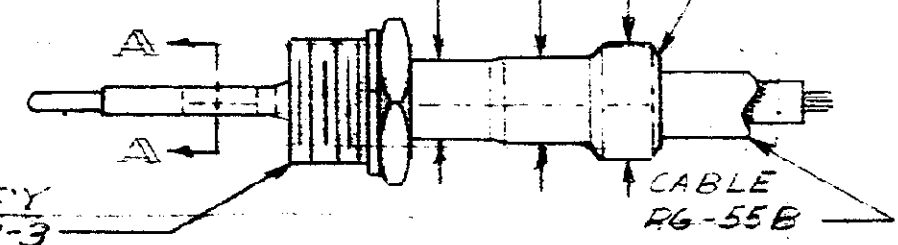
Use this tool on all parts after  
 1967. Do not use on parts  
 manufactured before 1967. To insure  
 proper Crimp-Crimp adjustment



**SUPERSEDED BY LS 2349**

INSULATION CRIMP  $\frac{.224}{.238}$        $\frac{.310}{.333}$  GASKET CRIMP

BRAID CRIMP  $\frac{.211}{.221}$



PLUG ASSY  
 #2-330953-3

METHOD OF GAGING CRIMP DIMS  
 THE CRIMP DIMS APPLY ONLY  
 TO THE ABOVE COMBINATIONS  
 ON A CRIMPED PRODUCT.

2	24058-5	CURVED WASHER	10
1	307089-2	LOCATOR	9
2	125115-1	WASHER	8
4	21045-6	RING - RETAINING	7
1	300449	PIN - RETAINING	6
1	39364	SPRING	5
1	39366	COLLAR	4
2	58183	PIN - RETAINING	3
2	1-306055-3	PIN - RETAINING	2
6	21045-3	RING - RETAINING	1

PRINTED BY AMP 12887 10/67  
 DIMENSIONS IN INCHES DO NOT SCALE PRINT  
 18  
 F-1

REV	DESCRIPTION	DATE	BY	CHK
E1	SUP BY I.S. 2349	3-30-67	PL	
E	REVISED	3-29-67	PL	
D	REVISED	1-25-67	BS	
C	REVISED	1-25-67	PL	
B	REVISED	2-3-67	PL	
A	REVISED	8-9-67	BS	

REV	DESCRIPTION	DATE	BY	CHK
2	69376-2			

2	DWG SIZE	NUMBER	NAME	REMARKS	REV
©1967 BY AMP INCORPORATED. ALL RIGHTS RESERVED AMP PRODUCTS COVERED BY PATENTS AND/OR PATENTS PENDING.		<b>CUSTOMER COPY REFERENCE ONLY</b> AMP INCORPORATED HARRISBURG, PENNA.		CLASS TYPE <b>BNC-TNC</b>	
DR <i>A. Flaynick 3-16-67</i> CHK <i>R. J. Hughes 3-29-67</i> DE APP <i>E. J. ... 4-10-67</i>		WIRE - RANGE - INSULATION <b>RG-55 B</b>		TOLERANCE EXCEPT AS NOTED = .015 = 1° 0 SCALE 1-1 LOC <b>M/B</b> NO <b>69376-2</b>	
<b>HAND TOOL ASSEMBLY</b>				NAME	