



Micro Commercial Components
 20736 Marilla Street Chatsworth
 CA 91311
 Phone: (818) 701-4933
 Fax: (818) 701-4939

RS501 THRU RS507

Features

- High Surge Current Capability
- Ideal for Printed Circuit Board
- Typical I_R less than 1mA
- Built-in Printed Board Stand Offs
- High Temperature Soldering Guaranteed 250°C for 5 Seconds

5 Amp Single Phase Bridge Rectifier 65 to 1000 Volts

Maximum Ratings

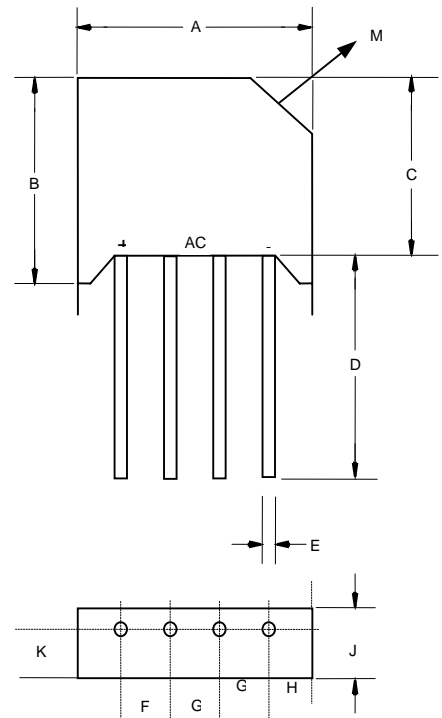
- Operating Temperature: -40°C to +125°C
- Storage Temperature: -40°C to +125°C

MCC Part Number	Maximum non-Repetitive Peak Reverse Voltage(note1)	Maximum Recurrent Peak Reverse Voltage	Maximum RMS Voltage	Maximum DC Blocking Voltage
RS501	100V	65V	40V	65V
RS502	190V	125V	80V	125V
RS503	300V	200V	125V	200V
RS504	600V	400V	250V	400V
RS505	900V	600V	380V	600V
RS506	1200V	800V	500V	800V
RS507	1500V	1000V	630V	1000V

Electrical Characteristics @ 25°C Unless Otherwise Specified

Maximum Average Forward Output Current I_{FAVM} nature cooling C-Load R+L-Load On classis =31in ² ,200cm ² , $T_A=45^\circ\text{C}$ C-Load R+L-Load	$I_{F(AV)}$	3.3A 4.0A 5.0A 6.0A	
Peak Forward Surge Current	I_{FSM}	30A	8.3ms, half sine
Peak Forward Surge Current Single Sine-wave on rated Load (JEDEC Method)	I_S	250A 200A	$T_J = 25^\circ\text{C}$ $T_J = 150^\circ\text{C}$
Maximum DC Reverse Current At Rated DC Blocking Voltage	I_R	1.0μA 6.0mA	$T_J = 25^\circ\text{C}$ $T_J = 150^\circ\text{C}$

Note 1: Valid for each bridge element



DIM	INCHES		MM		NOTE
	MIN	MAX	MIN	MAX	
A	1.550	1.580	39.40	40.10	
B	0.825	0.855	21.00	21.70	
C	0.785	0.825	20.20	21.00	
D	1.000	---	25.40	---	
E	0.035	0.042	0.97	1.07	
F	0.385	0.400	9.80	10.20	
G	0.285	0.300	7.20	7.60	
H	0.345	0.365	8.80	9.30	
J	0.245	0.265	6.20	6.70	
K	0.180	0.195	4.60	5.00	
M	0.188 x 45°		4.80 x 45°		

Electrical Characteristics @ 25°C Unless Otherwise Specified

I ² t Rating For Fusing (t<8.3ms)	I ² t	312A ² s 200 A ² s	T _J = 25°C T _J = 150°C
Maximum Instantaneous Forward Drop Per element at 5.0A		1.0V _{PK}	
Minimum Series Resistance at V _{RMS}	R _{Min}	0.15OHM 0.30OHM 0.60OHM 1.20OHM 1.80OHM	
Maximum Reservoir Capacitor	C	10000 μ F 5000 μ F 5000 μ F 2500 μ F 1000 μ F	