



SMA Female Connector Solder Attachment 0.062 inch
 End Launch PCB, .030 inch Diameter

TECHNICAL DATA SHEET

PE4542

SMA Female Connector Solder Attachment 0.062 inch End Launch PCB, .030 inch Diameter

Configuration

Connector	SMA Female
Connector Specification	MIL-STD-348A
Connector Interface Type	0.062 inch End Launch
Cable Attachment Method (Shield/Contact)	Solder
Body Style	Straight

Electrical Specifications

Frequency Range, GHz	DC to 18
Impedance, Ohms	50
Maximum VSWR	1.23:1
Maximum Operating Voltage, Volts	500
Dielectric Withstanding Voltage, Vrms	1,000

Mechanical Specifications

Temperature

Operating Range, deg C	-65 to +165
------------------------	-------------

Size

Length, in [mm]	0.56 [14.22]
Width/Dia., in [mm]	0.31 [7.87]
Height, in [mm]	0.38 [9.65]
Weight, lbs [g]	0.005 [2.27]

Connector

Type	SMA Female
Contact Material and Plating	Beryllium Copper, Gold
Contact Plating Specification	50µ in. minimum
Body Material and Plating	Brass, Gold
Body Plating Specification	3µ in. minimum
Dielectric Type	Teflon

Compliance Certifications (visit www.Pasternack.com for current document)

RoHS Compliant	Yes
----------------	-----

Click the following link (or enter part number in "SEARCH" on website) to obtain additional part information including price, inventory and certifications: [SMA Female Connector Solder Attachment 0.062 inch End Launch PCB, .030 inch Diameter PE4542](#)

The information contained in this document is accurate to the best of our knowledge and representative of the part described herein. It may be necessary to make modifications to the part and/or the documentation of the part, in order to implement improvements. Pasternack reserves the right to make such changes as required. Unless otherwise stated, all specifications are nominal.





SMA Female Connector Solder Attachment 0.062 inch
End Launch PCB, .030 inch Diameter

TECHNICAL DATA SHEET

PE4542

Plotted and Other Data

Notes:

Values at 25 °C, sea level

SMA Female Connector Solder Attachment 0.062 inch End Launch PCB, .030 inch Diameter from Pasternack Enterprises has same day shipment for domestic and International orders. Our RF, microwave and fiber optic products maintain a 99% availability and are part of the broadest selection in the industry.

Click the following link (or enter part number in "SEARCH" on website) to obtain additional part information including price, inventory and certifications: [SMA Female Connector Solder Attachment 0.062 inch End Launch PCB, .030 inch Diameter PE4542](http://www.pasternack.com/sma-female-standard-0.062-end-launch-connector-pe4542-p.aspx)

URL: <http://www.pasternack.com/sma-female-standard-0.062-end-launch-connector-pe4542-p.aspx>

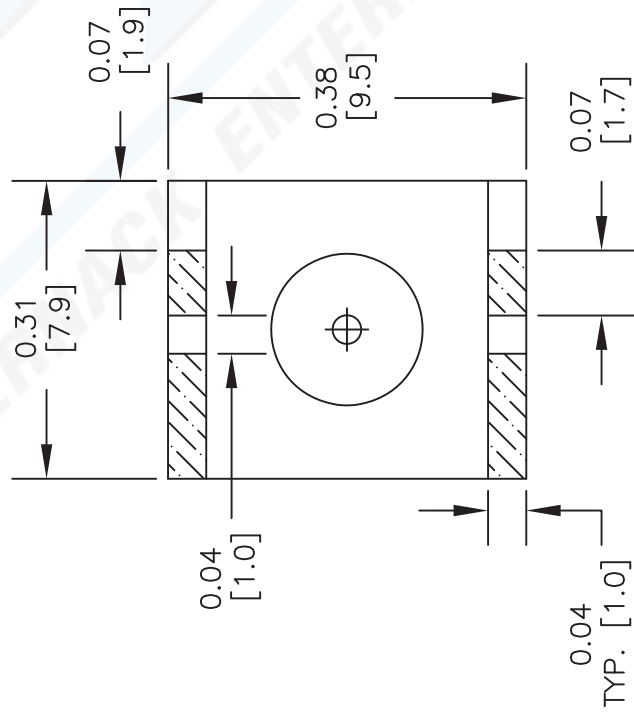
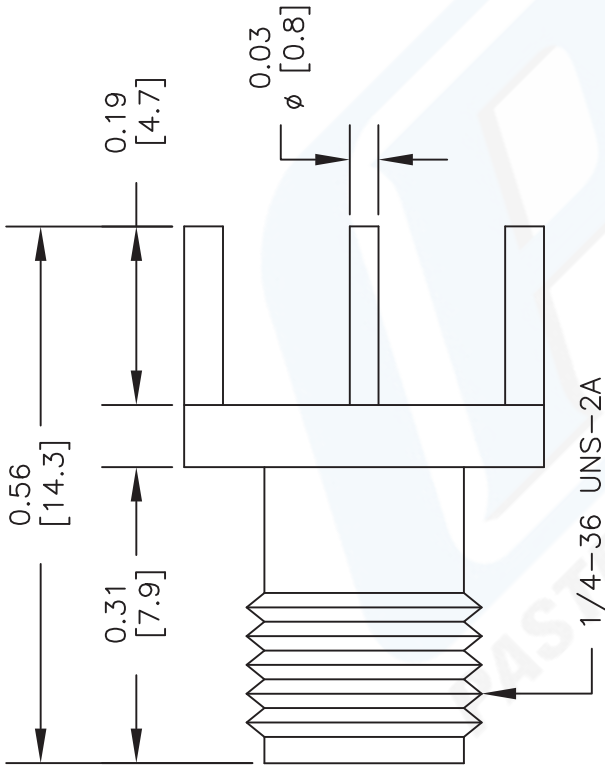
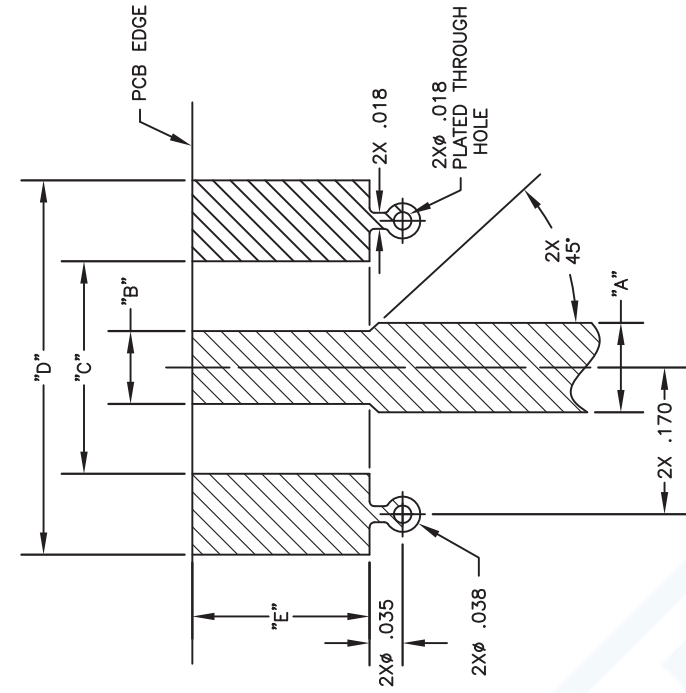
The information contained in this document is accurate to the best of our knowledge and representative of the part described herein. It may be necessary to make modifications to the part and/or the documentation of the part, in order to implement improvements. Pasternack reserves the right to make such changes as required. Unless otherwise stated, all specifications are nominal.



PE4542 CAD Drawing

SMA Female Connector Solder Attachment 0.062 inch

End Launch PCB, .030 inch Diameter



PART NO.	BASE WIDTH	BOARD THICK	MOUNTING CHART				
			"A"	"B"	"C"	"D"	"E"
PE4542	.375	.062	.103	.090	.250	.440	.200
PE4543	.375	.062	.103	.090	.250	.440	.200
PE44205	.375	.047	.083	.075	.250	.440	.200
PE44206	.375	.031	.050	.045	.250	.440	.200
PE44207	.375	.042	.083	.075	.250	.440	.200
PE44208	.375	.047	.083	.075	.250	.440	.200
PE44134	.250	.042	.103	.070	.170	.380	.200

1. SOLID COPPER GROUND PLANE REQUIRED ON BOTTOMSIDE OF CIRCUIT BOARD.

- NOTES:
1. UNLESS OTHERWISE SPECIFIED ALL DIMENSIONS ARE NOMINAL.
 2. ALL SPECIFICATIONS ARE SUBJECT TO CHANGE WITHOUT NOTICE AT ANY TIME.
 3. DIMENSIONS ARE IN INCHES [mm].
 4. FITS MIL-C-17 AND EQUIVALENT CABLES.

DWG TITLE

PE4542

PE PASTERNAK®

Pasternack Enterprises, Inc.
 P.O. Box 16759 | Irvine | CA | 92623
 Phone: (949) 261-1920 | Fax: (949) 261-7451
 Website: www.pasternack.com | E-Mail: sales@pasternack.com

FSCM NO. 53919

2233

SIZE A

SCALE N/A

CAD FILE 032513-B