

HALL EFFECT LINEAR OUTPUT PUSHBUTTONS

PROVIDES 10 MILLION LINEAR OUTPUT CYCLES USING CONTACTLESS HALL EFFECT TECHNOLOGY

The HPL Series is a revolutionary new switch utilizing Hall Effect technology to provide the user an output proportional to the travel of the button. Available IP68 with seal, the HPL delivers 10,000,000 actuations. This rugged switch is ideal for applications where a simple On/Off control is insufficient, and a linear output is desired. Using the HPL, an operator can control the motion of a device as well as the speed of the movement. The HPL switch is an ideal control device for valves and variable speed drives, and can be used in industrial control, heavy equipment, and material handling applications.

The HPL is offered as a stand-alone switch and in a dual HPL rocker assembly. As with all OTTO switches, a wide variety of case and button styles and colors are offered, along with various termination styles and two levels of sealing. OTTO can also provide custom configurations as well as provide the HPL switches installed in a control grip.



Quality Features:

- Programmable outputs of .5 to 4.5 volts
- 10 million cycle performance
- Hall Effect for reliable contactless switching
- Can be sealed watertight per IP68
- Front or behind panel mounting
- Choice of termination styles
- Rocker version available

Rocker Assembly Using 2 HPL's



HPL Part Number Code

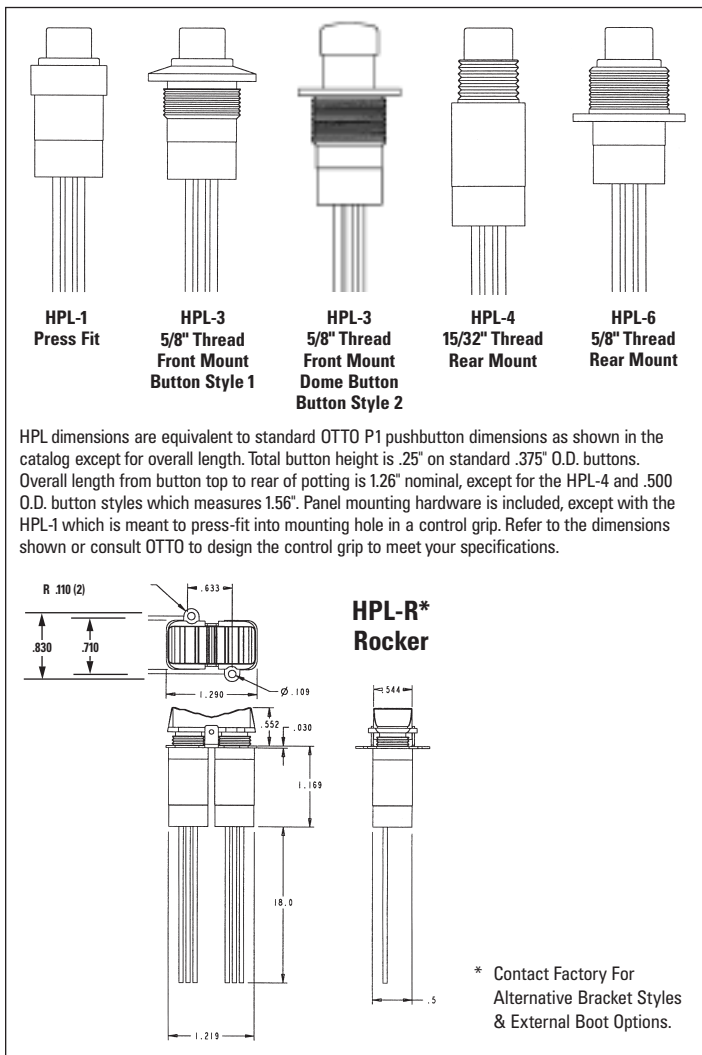
HPL- X X X X X X X

Case Style	Output	Terminal Style	Seal Level	Case Color	Button Color	Button Style
1. Press Fit	1. 1-4V	1. 3 Pin	1. IP65 Splashproof	1. Clear	1. Red	1. .375" OD (Case Styles 1, 3, 4, & 6)
3. Front Mount 5/8" Thread	2. 4-1V	.025 SQ Pins, .100 Centers	2. IP68S Watertight	Anodize	2. Black	2. 500" OD Domed (Case Styles 1, 3, & 6)
4. Rear Mount 15/32" Thread	3. .5-4.5V	2. 18" Potted 22AWG Wire Leads		2. Black Anodize	3. Orange	R. Rocker Assembly (Case Style R)
6. Rear Mount 5/8" Thread	4. 4.5-.5V				4. Yellow	
R. Rocker Assembly					5. Green	
					6. Blue	
					7. Purple	
					8. Grey	
					9. White	

Consult factory for availability of larger button diameters.

PROVIDES 10 MILLION LINEAR OUTPUT CYCLES USING CONTACTLESS HALL EFFECT TECHNOLOGY

Case Styles



Standard Characteristics/Ratings:

OPERATIONAL:

Mechanical Life: 10,000,000 cycles

Seal Options: IP64 & IP68

Temperature Range: -40°C to +85°C

Button Travel: .14 to .16 inches

Operating Force: 2.0 ± 0.2 lbs.

MATERIALS:

Button: Thermoplastic

Case: Black anodized aluminum alloy

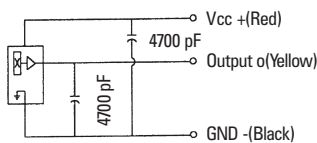
ELECTRICAL:

Supply Voltage: 4.5VDC to 5.5VDC max.

Supply Current: 10 mA max.

Continuous Current Output: 1 mA max.

Reverse Voltage Protection: -5V max.



Schematic

Linear Output Graphs (Vcc=5V@20°C)

