

Thru Hole TCXO

- 8.0 mm height
- Tight stability availability
- Sinewave output

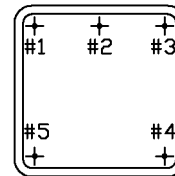
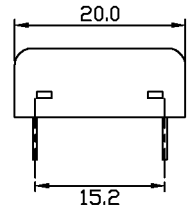
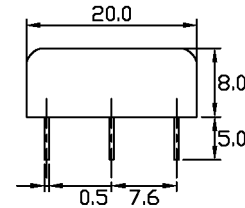
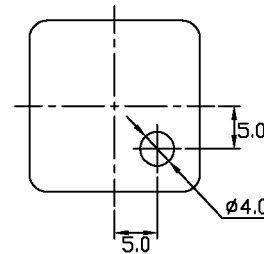
Part Numbering Example: **CC180 L - A2 B2 - 22.5792**

CC180	L	A2	B2	22.5792
SERIES	VOLTAGE	OPERATING TEMP.	STABILITY	FREQUENCY
CC180	Blank = 5V L = 3.3V	A2 = -10°C ~+60°C A3 = -30°C ~+75°C A5 = -20°C ~+70°C A9 = 0°C ~+50°C AA = -10°C ~+70°C AB = -30°C ~+70°C AC = -30°C ~+60°C AE = -40°C ~+80°C	B1 = ±5.0 ppm B2 = ±3.0 ppm B3 = ±2.5 ppm B4 = ±2.0 ppm B5 = ±1.5 ppm B9 = ±4.0 ppm BB = ±4.5 ppm BF = ±3.5 ppm	

Specifications:

Frequency Range:	1.000 MHz to 35.000 MHz
Available Stability Options:	±5.0 ppm ±4.5 ppm ±4.0 ppm ±3.5 ppm ±3.0 ppm ±2.5 ppm ±2.0 ppm ±1.5 ppm
Output Series:	Clipped Sine
Input Voltage:	+5.0 VDC ±5%
Operating Temperature Range Options:	0°C to +50°C -10°C to +60°C -10°C to +70°C -20°C to +70°C -30°C to +60°C -30°C to +70°C -30°C to +75°C -40°C to +80°C
Output Voltage:	1.0 Volt Peak to Peak Minimum
Frequency Trim Range With Externally Adjustable Trimmer:	±3.0 ppm Minimum
Output Load:	20K OHM Parallel with 5 pf
Maximum Input Current:	3 mA
Maximum Frequency Aging at +25°C:	±1 ppm/yr
Storage Temperature:	-40°C to +80°C

CC180



PIN	FUNCTION
1	V _{CC}
2	OUTPUT
3	V _{control} /GND
4	GND
5	GND

