

Switched and Fused Filtered Power Entry Modules

For General Purpose Applications

SPECTRUM CONTROL

64-65-BSF/64-65-SSF Series

Features

- North American and Metric fuse holders available
- Fuse holder and double pole power ON/OFF switch provides a convenient/compact package
- Suitable for products that must conform to FCC and FTZ requirements
- Meets over voltage category II of IEC 664 and complies with IEC 950
- Metal case provides effective shielding
- IEC connector meets the safety standards of most certifying organizations
- Easy access fuse drawer
- Space for spare fuse
- Flange mounted or snap-in styles available for quick mounting
- UL recognized, CSA certified
- TÜV approved, parts are tested and found to be in accordance with VDE 0565 part 3

Applications

- Computers and peripheral equipment
- Electronic equipment
- Digital equipment

Specifications

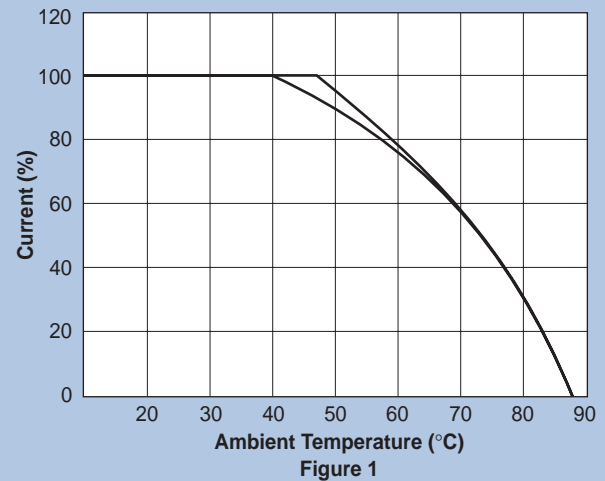
Part Number	Voltage Rating	Current Rating	Leakage Current: (Max.)	Temperature Rise (Max.)	Operating Temperature
64-B(S)SF-020-3-**	250VAC	2A	0.35mA	45°C	-25°C to +85°C (including temperature rise) See Figure 1.
64-B(S)SF-020-5-**			0.50mA		
64-B(S)SF-040-3-**	250VAC	4A	0.35mA	45°C	
64-B(S)SF-040-5-**			0.50mA		
64-B(S)SF-060-3-**	250VAC	6A	0.35mA	45°C	
64-B(S)SF-060-5-**			0.50mA		
65-B(S)SF-020-3-**	125VAC	2A	0.35mA	45°C	
65-B(S)SF-020-5-**			0.50mA		
65-B(S)SF-040-3-**	125VAC	4A	0.35mA	45°C	
65-B(S)SF-040-5-**			0.50mA		
65-B(S)SF-060-3-**	125VAC	6A	0.35mA	45°C	
65-B(S)SF-060-5-**			0.50mA		

Note: Test Voltage 1500 VAC one minute, line to ground.
 Insulation Resistance: 300 MΩ min. at 500VDC.
 Voltage Drop: 1V max. at rated current.
 Weight: 130g
 Inlet: Compatible with IEC-320
 B(S) = Bolt-in terminals or (Snap-in terminals)

** Capacitance Values:
 - 01 = 2 X 0.10μF
 - 02 = 0.10μF & 0.22μF
 - 03 = 0.22μF & 0.10μF
 - 04 = 2 X 0.22μF
 - 05 = 0.47μF & 0.10μF
 - 06 = 0.47μF & 0.22μF
 - 11 = 0.10μF (1 cap only)
 - 12 = 0.22μF (1 cap only)
 - 14 = 0.47μF (1 cap only)



Temperature Characteristics



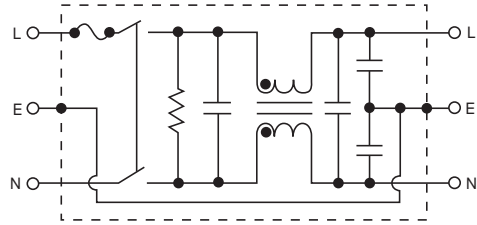
- Measuring and testing instruments
- Telecommunications equipment



SPECTRUM CONTROL INC.
 A Control Products & Systems Company

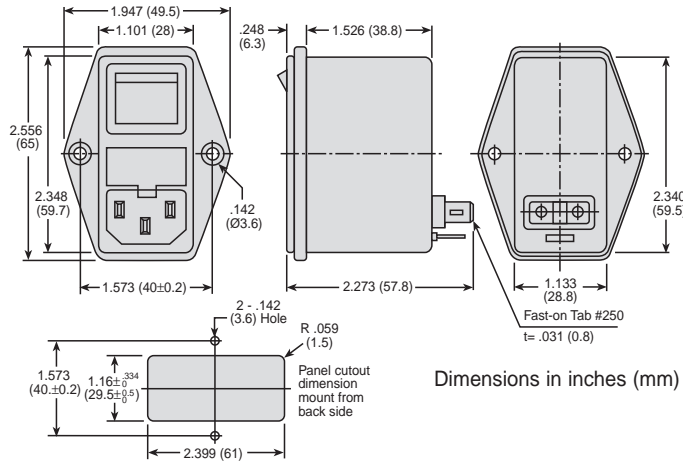
Switched and Fused Filtered Power Entry Modules For General Purpose Applications

Circuit Diagram

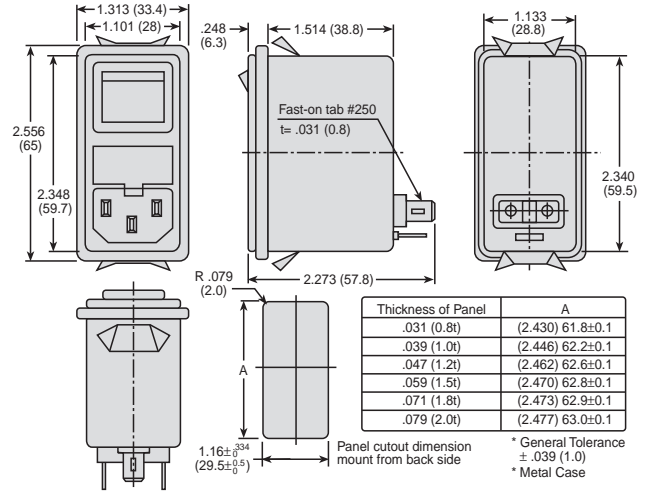


Dimensions

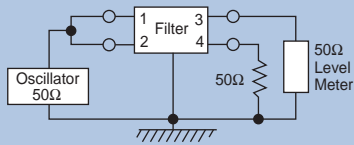
64/65-BSF Series



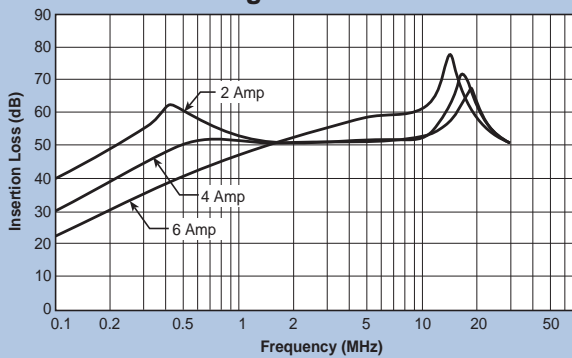
64/65-SSF Series



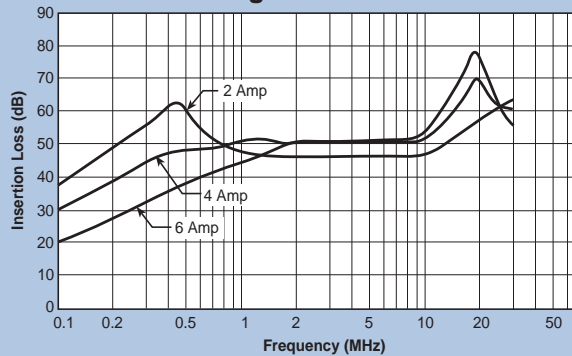
Common Mode



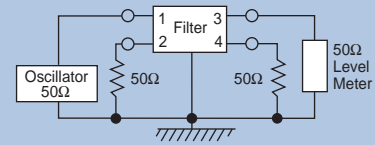
0.35 mA Leakage Versions



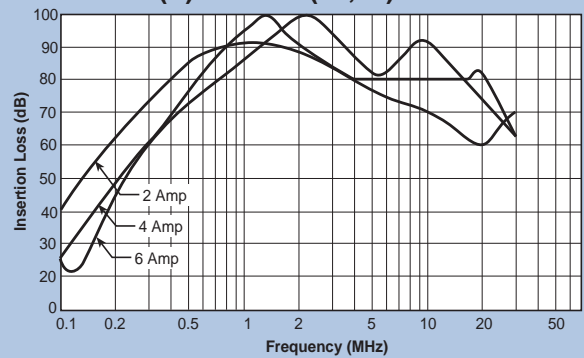
0.50 mA Leakage Versions



Normal Mode



64/65-B(S)SF-*-02(04,06)



64/65-B(S)SF-*-01(03,05)

