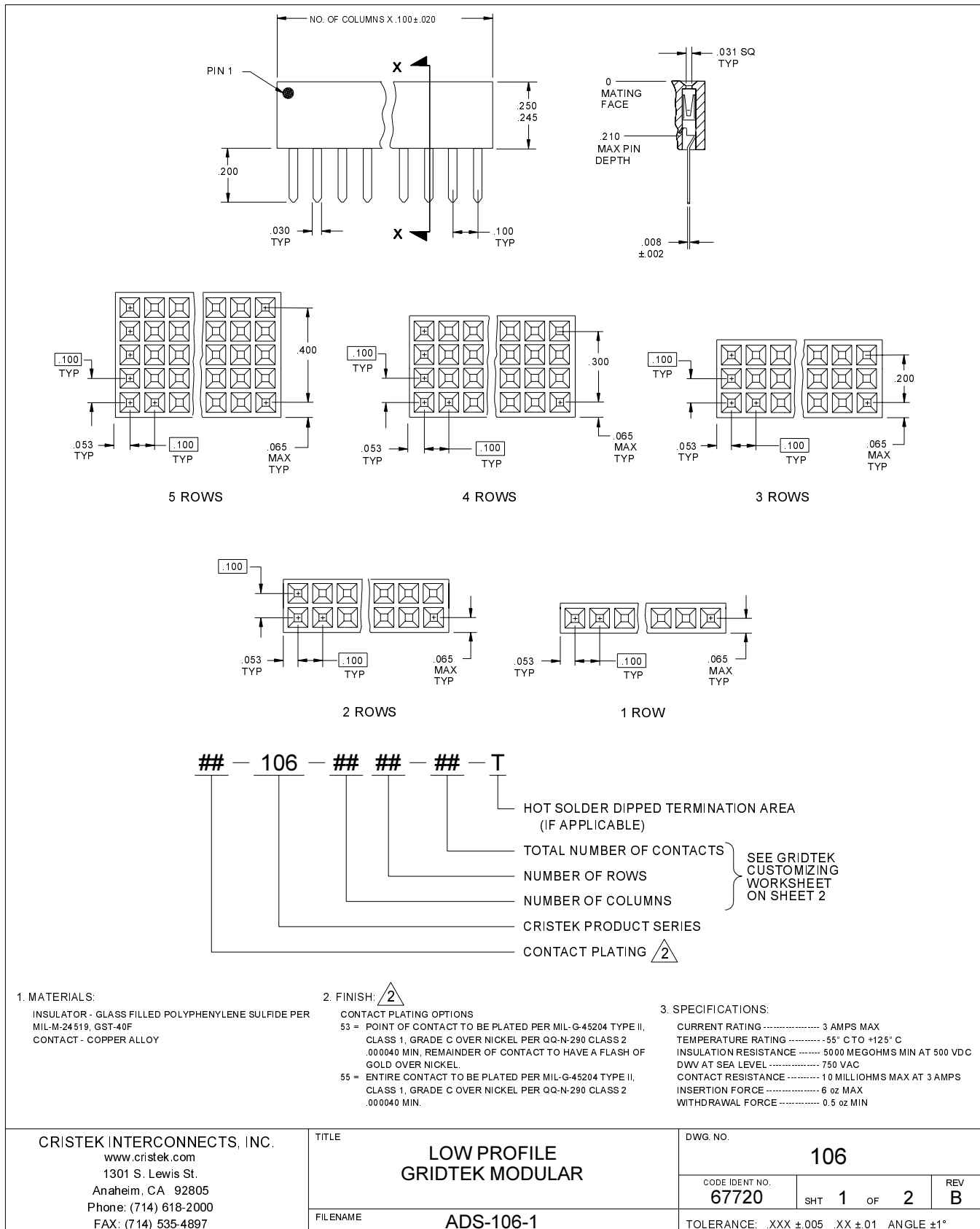
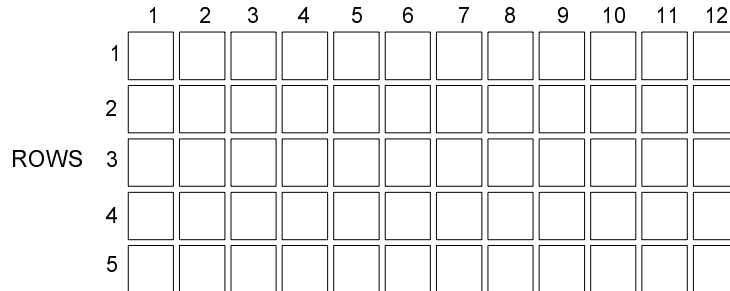


## 5.2 PC BOARD CONNECTORS / MOTS



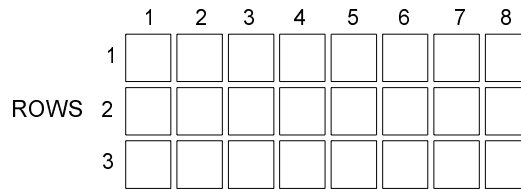
**GRIDTEK CUSTOMIZING WORKSHEET**

COLUMNS

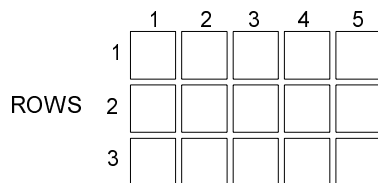


LARGEST GRIDTEK CONFIGURATION (60 CONTACTS)

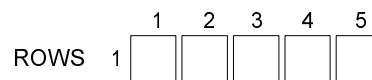
COLUMNS



COLUMNS



COLUMNS



**THE WHY & HOW OF GRIDTEK**

1. GRIDTEK CONNECTORS ARE DESIGNED FOR STACKING TWO CIRCUIT BOARDS BACK TO BACK. THESE ACCOMMODATING CONNECTORS ARE LOW PROFILE AND MATE WITH STANDARD .100 X .100 GRID ARRAYS OF .025 ± .001 SQUARE CONTACTS.
2. GRIDTEK CONNECTORS ARE AVAILABLE IN THE STANDARD CONFIGURATIONS ILLUSTRATED ON THIS PAGE. THE GRIDTEK CONNECTOR SYSTEM CAN BE EASILY MODIFIED FOR USE WITH CUSTOM LAYOUTS WITH OUT MAJOR DESIGN COSTS AND DELIVERY DELAYS.
3. FOR CUSTOM GRIDTEK PART NUMBERS, COMPLETE THE PART NUMBERING SYSTEM ON THE PREVIOUS PAGE BY INDICATING THE NUMBER OF COLUMNS, ROWS AND CONTACTS.

CRISTEK INTERCONNECTS, INC. www.cristek.com 1301 S. Lewis St. Anaheim, CA 92805 Phone: (714) 618-2000 FAX: (714) 535-4897	TITLE	DWG. NO. <b>106</b>			
	<b>LOW PROFILE GRIDTEK MODULAR</b>		CODE IDENT NO. <b>67720</b>	SHT <b>2</b> OF <b>2</b>	REV <b>B</b>
	FILENAME	<b>ADS-106-2</b>		TOLERANCE: .XXX ± .005 .XX ± .01 ANGLE ± 1°	