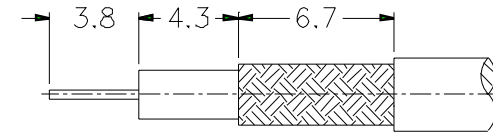
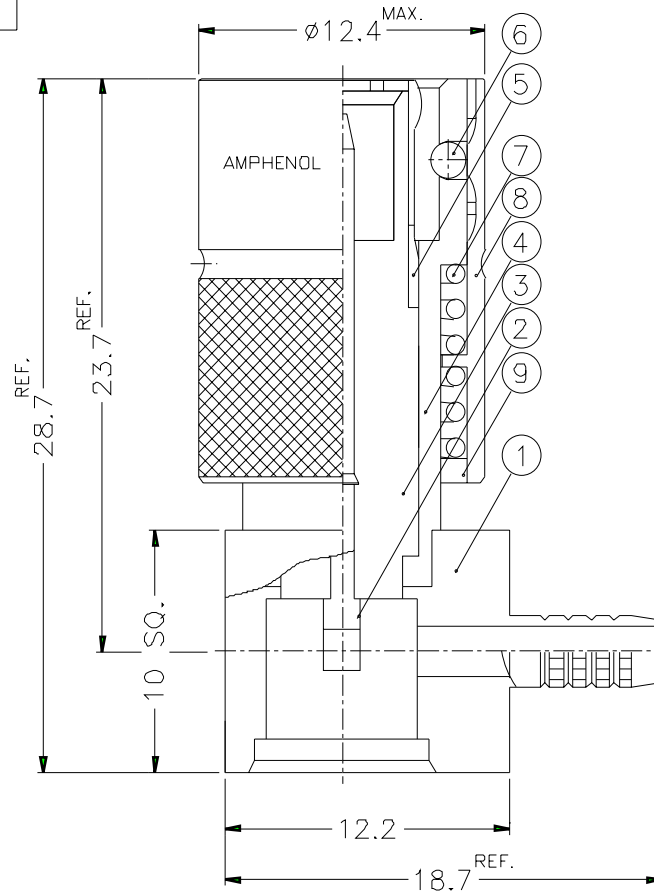
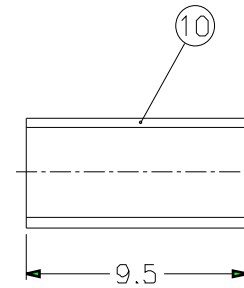


REVISIONS		
ISS	ZONE	DESCRIPTION\PER REQUEST\DATE

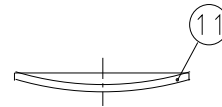
CABLES: - FILOTEX NO ETUDE 276097  
 - TBR/CAB-SP.01  
 - TRSP.125  
 - ST 212 (SIRT1 TCE2HH2)  
 - PIRELLI SIP CT 1320



RECOMMENDED  
CABLE STRIPPING DIM'S



- 1. CRIMPED FERRULE  
HEX CRIMP SIZE .151"
- 2. CONTACT PIN TO SOLDER



11	COVER	BRASS	NICKEL	1	4G-061-00
10	FERRULE	COPPER	NICKEL	1	4K-871-13
9	RING	BRASS	NICKEL	1	4M-472-01
8	OUTER BODY	BRASS	NICKEL	1	3D-853-01
7	SPRING	SUS303	NATURAL	2	4M-473-01
6	BALL	SUS303	NATURAL	4	4M-169-01
5	OUTER CONTACT	BRONZE	GOLD	1	3E-249-01
4	BODY	BRASS	NICKEL	1	1561112L1-4
3	INSULATOR	PTFE	NATURAL	1	1561112L1-3T-75
2	CONTACT PIN	BRASS	NICKEL	1	1561112L1-2
1	HOUSING	BRASS	NICKEL	1	
NO	DESCRIPTION	MATERIAL	FINISH	Q'TY	DRAWING NO.

DIMENSIONS ARE IN MILLIMETERS

UNLESS OTHERWISE SPECIFIED  
TOLERANCES

0.5-6 = ±0.2  
 6-30 = ±0.4  
 30-120 = ±0.6  
 120-315 = ±1  
 315-1000 = ±1.6  
 1000-2000 = ±2.4

PART NO.	1561112L1-E20	
APPROVED	DATE	08-13-02'
CHECKED	DATE	08-13-02'
DRAWN	DATE	08-13-02'
FILE NO.	F:\ND\16\1112\ERA\28\7F\MN	

<b>Amphenol RF</b>	
TITLE 1.6/5.6 R/A PUSH-PULL CRIMP PLUG	
DRAWING NO. 161112ERA28MN7F	
ITEM NO. 161112ERA28MN7F	