

SPECIFICATIONS

Mechanical

Mating Force: 4.5Pounds max.(RJ45) 7.88Pounds max.(USB)
Unmating Force: 4.5Pounds max.(RJ45) 2.25Pounds min.(USB)
Durability: 1000 Cycles(RJ45) 1500 Cycles(USB)

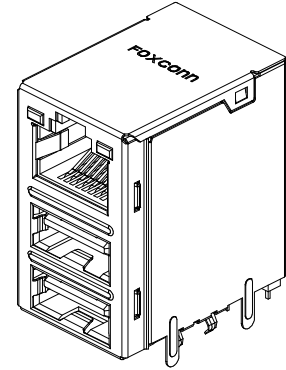
Electrical

Current Rating: 0.5A max.(RJ45) 1.0A(USB)
Dielectric Withstanding Voltage: 1000V(RJ45) 500V(USB)

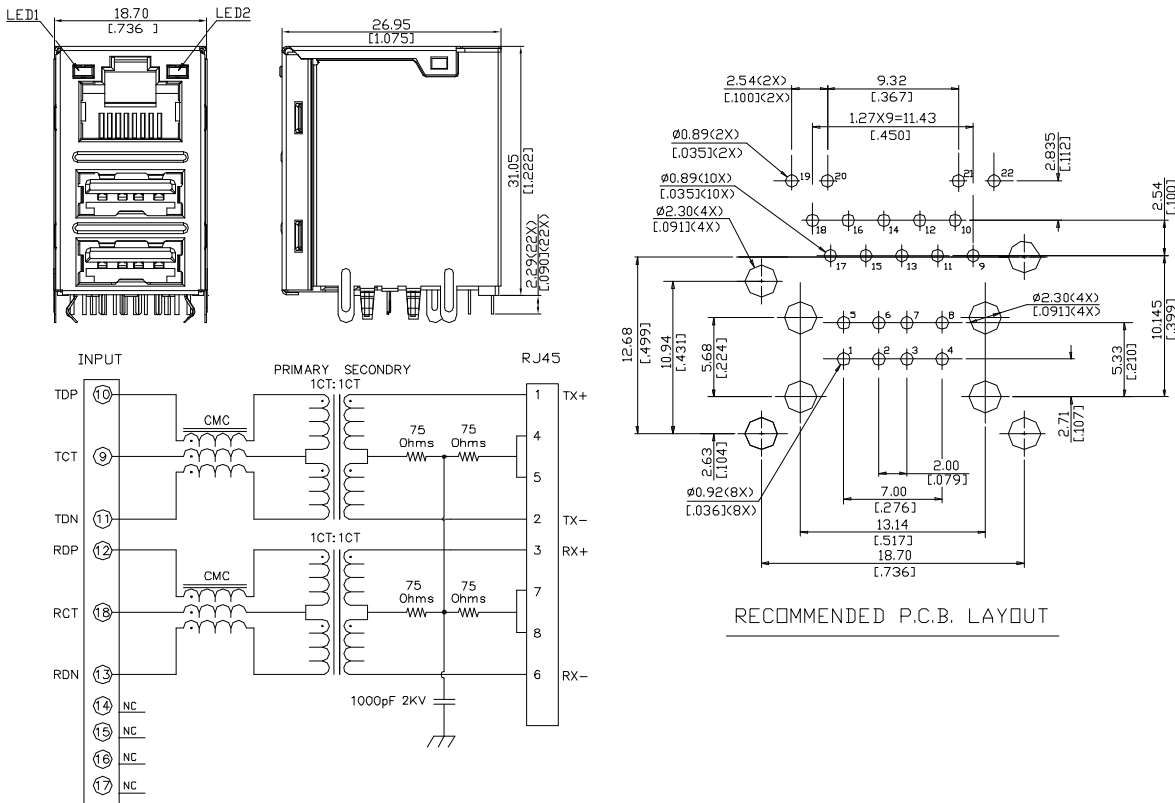
Physical

Housing: Thermoplastic, UL 94V-0 rated in Black Color
Contact: Copper Alloy
Shell: Copper Alloy
Operating Temperature: 0°C to +70°C

JFM Series
RJ45 Over Dual USB
R/A, T/H Type
1.27mm [.050"] Pitch
10/100 Base-T



DRAWING



ORDERING INFORMATION

PRODUCT NO.: JFM 2 4 U 1 * - 7107 - 4 F

RJ With Magnetic: _____
 Protocol Type: 2=10/100 Base T _____
 Core Count: 4=4Core _____
 Configuration: U=Combo USB _____
 PCB Attach Method: 1= Solder Tail _____
 Material Of Plating: F=Lead Free _____
 Packaging: 4=Soft Tray _____
 Extension Code _____
 LEDs: (See Sheet) _____

JFM24U1J-7107-4F	19	KK	GREEN	20	21	KK	GREEN	22
JFM24U1H-7107-4F	19	ORANGE	XX	20	21	GREEN	XX	22
JFM24U1G-7107-4F	19	YELLOW	XX	20	21	GREEN	XX	22
JFM24U1F-7107-4F	19	GREEN	XX	20	21	ORANGE	XX	22
JFM24U1B-7107-4F	19	GREEN	XX	20	21	YELLOW	XX	22
JFM24U1A-7107-4F	19	GREEN	XX	20	21	XX	YELLOW	22
JFM24U14-7107-4F	19	YELLOW	XX	20	21	YELLOW	XX	22
JFM24U13-7107-4F	19	XX	GREEN	20	21	XX	YELLOW	22
JFM24U12-7107-4F	19	GREEN	XX	20	21	GREEN	XX	22
JFM24U11-7107-4F	19	YELLOW	XX	20	21	GREEN	XX	22
JFM24U10-7107-4F		NONE				NONE		
PRODUCT NO.		LED1				LED2		