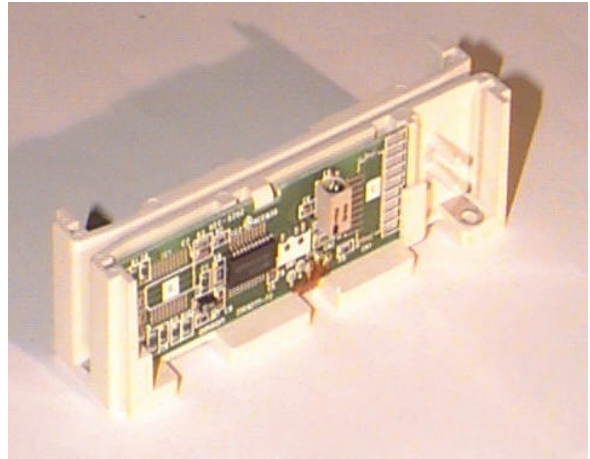

Manual Swipe Magnetic Card Reader

3S4YR-HNR

Low Power, Compact, Manually Operated Card Reader

- Low power through use of CMOS circuitry.
- Lightweight and compact size.
- Stable operation with card swipe speed within a range of 10 to 150 cm/second.
- Single, double and triple back configurations.
- Solder pad or connector on PCB for customizing cable harness
- TTL interface or RS232 interface
- Snap-on cover
- Available with black or white housing



Ordering Information

Track Reading	Enclosure	I/O	Part Number
Track 1	Enclosed	Solder pad	3S4YR-HNR3
Track 2	Enclosed	Solder pad	3S4YR-HNR4
Track 2 /BPI switchable	Enclosed	Solder pad	3S4YR-HNR4U
Track 3	Enclosed	Solder pad	3S4YR-HNR5
Tracks 1 and 2	Enclosed	Solder pad	3S4YR-HNR6

Tracks 2 and 3	Enclosed	Solder pad	3S4YR-HNR7
Tracks 1, 2 and 3	Enclosed	Connector	3S4YR-HNR1

Specifications

Part number	3S4YR-HNR
Recommended card type	Magnetic Card: ISO 7810, 7811/1-5, 7812, 7813
Number of tracks	1, 2, or 3; available in many combinations. See "Ordering Information".
Recording Method	F2F
Recording density	Track 1: 210 BPI Track 2: 75 BPI Track 3: 210 BPI
Memory Capacity	Track 1: 7 bit x 79 characters max. Track 2: 5 bit x 40 characters max. Track 3: 5 bit x 107 characters max.
Card Feeding Time	10 to 150 cm/second.
Sevice life of magnetic head	300,000 passes minimum
Operating Power Supply	+5 VDC±10%
Current Consumption	Single Track: 5.0 mA max Double Track: 10.0 mA max Triple Track: 15.0 mA max.
Mounting Location	Anywhere not directly subject to water and sunlight.
Ambient Temperature (Operation)	-10°C to 55°C (14° to 131° F)
Ambient Temperature (Storage)	-30°C to 70°C (-22° to 158° F)
Ambient Humidity	10% to 95% RH without condensation

(Operation)	
Ambient Humidity (Storage)	10% to 95% RH
Vibration	10 to 55Hz, 2mm double amplitude, for 30 minutes in each of X, Y and Z directions.
Shock	300m/sec ² ; (30 G) in each of X, Y and Z directions.
Dimensions (With cover)	90 L x 28 W x 26.5 H mm
Dimensions (Without cover)	90 L x 24 W x 24 H mm
Weight	Approx 40 g (1.42 oz.) enclosed; 25 g (0.89 oz.) no cover

Application Examples

- Credit card readers.
- ID card checkers.
- Electronic locks/Access control.
- Automatic gate machines.
- Point-of-sale systems (EFTPoS).