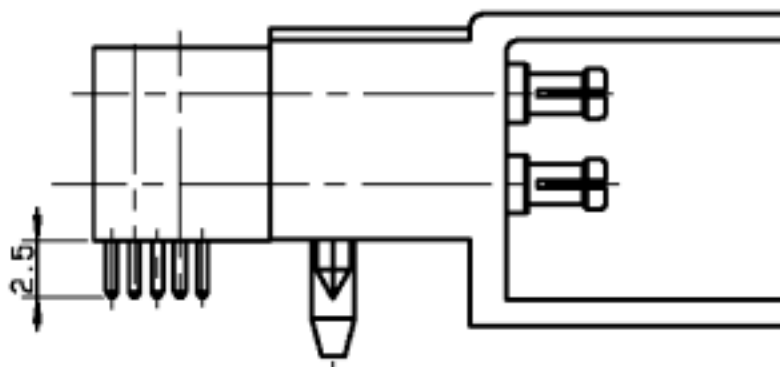
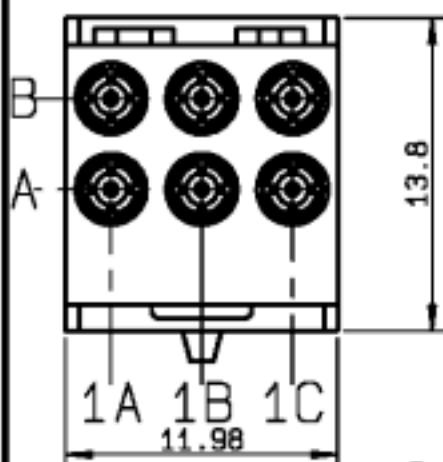


**RIGHT ANGLE MALE MODULE 6 SOLDER TYPE
INSERTS 2.5 MM FOR PCB**

R694.251.107

SERIES

MCC2



3 COAX POSITION AB/1A,1B,1C

NOMINAL IMPEDANCE	50 Ω
FREQUENCY RANGE	0-6 GHz
TEMPERATURE RATING	-25/+125 °C
V.S.W.R	1.12 + x F(GHz)Max1
RF INSERTION LOSS	0.2 \sqrt{F} (GHz) dB Max1
VOLTAGE RATING	500 V _{eff} Max1
DIELECTRIC WITHSTANDING VOLTAGE	750 V _{eff} Mini
INSULATION RESISTANCE	5000 M Ω Mini
HERMETIC SEAL	NA Atm.cm ³ /s
LEAKAGE (pressurized only)	NA
MECHANICAL DURABILITY	500 Cycles
WEIGHT	8.45 gr
SPECIFICATION	

CABLES :

OTHERS CHARACTERISTICS

RDS 1.12 MAXI OPTIMISE ENTRE 0 ET 3 GHz

CABLE RETENTION	NA	N Mini
CENTER CONTACT RETENTION		
Axial force - mating end	6	N Mini
Axial force - opposite end	6	N Mini
Torque	NA	cm.N Mini
RECOMMENDED TORQUES		
Mating	NA	cm.N
Panel nut	NA	cm.N
Clamp nut	NA	cm.N

CONNECTOR PARTS	MATERIALS	FINISH	(all values are given in micrometers)
BODY	BRASS	NICKEL 2	
OUTER CONTACT	BRONZE	GOLD 1.3 OVER NICKEL 2	
CENTER CONTACT	BERYLLIUM COPPER	GOLD 1.3 OVER NICKEL 2	
INSULATOR	PTFE	-	
GASKET		-	
OTHERS PIECES	LIQUID CRISTAL POLYMER		

BAFFERT

ISSUE 0234B00	CREATION DATE 05/11/1996	FILE PART-NUMBER EPC 95-08
-------------------------	------------------------------------	--------------------------------------



The information given here is subject to change without notice.
Design changes may be in order to improve the product.

Connect to the future

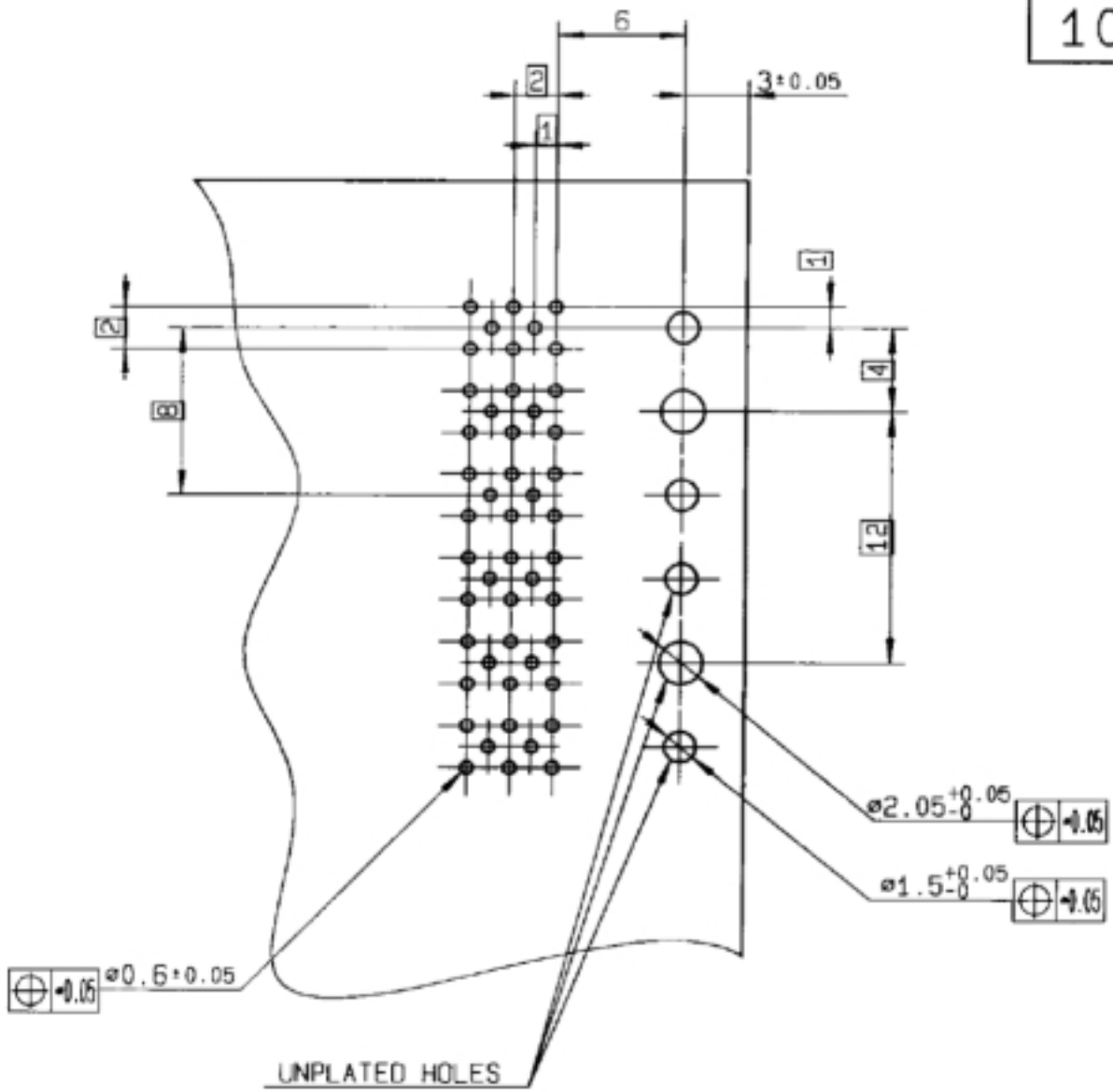
MALE COAXIPACK 6 WAYS
WITH COAX SOLDER TYPE

Issue : 9644

Series : MCC2
Page : 2 / 2

-
-
-
-
106
107

RECOMMENDED P.C BOARD LAYOUT (COMPONENT SIDE)



ISSUE	REVISION No	DESCRIPTION	BY	DATE

Initiated on 29-01-96
Approval by GONZALES

The information given here is subject to change without notice. Design changes may be made in order to improve the product.

