

5 & 10 Tap 10K / 10KH ECL Buffered Delay Modules

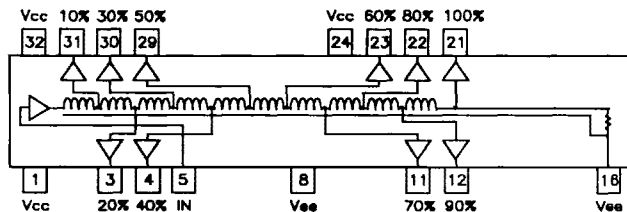
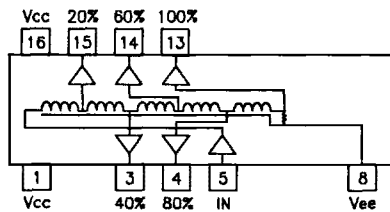
Electrical Specifications at 25°C

Delay Tolerances		ECL Buffered 5 Tap Modules	
Total (ns)	Tap-to-Tap (ns)	10K Part Number	10KH Part Number
6 ± 1.50	** 1 ± 0.4	** DECL-6	** DECLH-6
10 ± 1.50	2 ± 0.6	DECL-10	DECLH-10
15 ± 1.50	3 ± 0.7	DECL-15	DECLH-25
20 ± 1.50	4 ± 1.0	DECL-20	DECLH-25
25 ± 1.50	5 ± 1.0	DECL-25	DECLH-25
30 ± 2.00	6 ± 1.5	DECL-30	DECLH-30
35 ± 2.00	7 ± 1.5	DECL-35	DECLH-35
40 ± 2.00	8 ± 2.0	DECL-40	DECLH-40
45 ± 2.25	9 ± 2.0	DECL-45	DECLH-45
50 ± 2.50	10 ± 2.0	DECL-50	DECLH-50
60 ± 3.00	12 ± 2.0	DECL-60	DECLH-55
70 ± 3.50	14 ± 2.0	DECL-70	DECLH-70
75 ± 3.75	15 ± 2.5	DECL-75	DECLH-75
100 ± 5.00	20 ± 3.0	DECL-100	DECLH-100
125 ± 6.25	25 ± 3.0	DECL-125	DECLH-125
150 ± 7.50	30 ± 3.0	DECL-150	DECLH-150
200 ± 10.00	40 ± 4.0	DECL-200	DECLH-200
250 ± 12.50	50 ± 5.0	DECL-250	DECLH-250

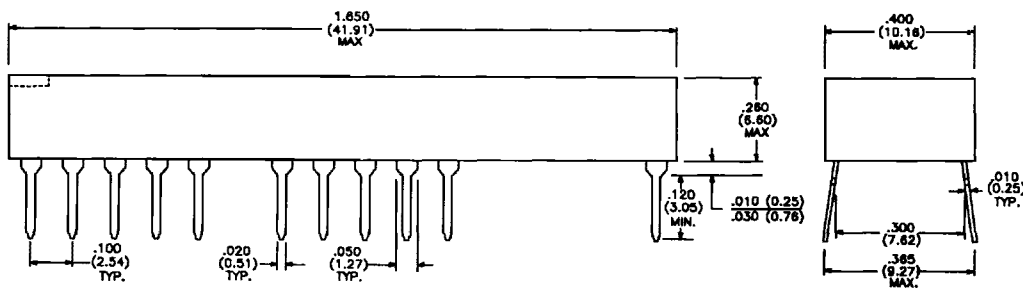
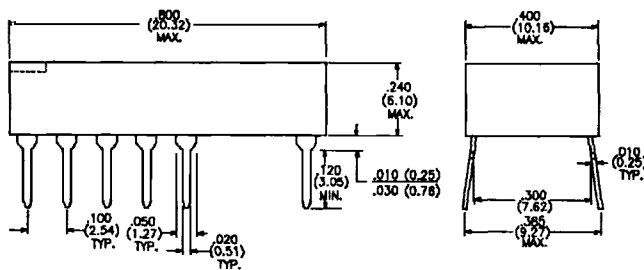
Electrical Specifications at 25°C

Delay Tolerances		ECL Buffered 10 Tap Modules	
Total (ns)	Tap-to-Tap (ns)	10K Part Number	10KH Part Number
6.5 ± 1.50	** 0.5 ± 0.2	** D2ECL-6.5	** D2ECLH-6.5
10 ± 1.50	** 1 ± 0.4	-----	** D2ECLH-10
11 ± 1.50	** 1 ± 0.4	** D2ECL-11	-----
15 ± 1.50	1.5 ± 0.6	** D2ECL-15	D2ECLH-15
20 ± 1.50	2 ± 0.6	D2ECL-20	D2ECLH-20
25 ± 1.50	2.5 ± 0.8	D2ECL-25	D2ECLH-25
30 ± 1.50	3 ± 1.0	D2ECL-30	D2ECLH-30
35 ± 2.00	3.5 ± 1.0	D2ECL-35	D2ECLH-35
40 ± 2.00	4 ± 1.0	D2ECL-40	D2ECLH-40
45 ± 2.25	4.5 ± 1.0	D2ECL-45	D2ECLH-45
50 ± 2.50	5 ± 1.5	D2ECL-50	D2ECLH-50
60 ± 3.00	6 ± 1.5	D2ECL-60	D2ECLH-60
75 ± 3.75	7.5 ± 2.0	D2ECL-75	D2ECLH-75
100 ± 5.00	10 ± 2.0	D2ECL-100	D2ECLH-100
125 ± 6.25	12.5 ± 3.0	D2ECL-125	D2ECLH-125
150 ± 7.50	15 ± 3.0	D2ECL-150	D2ECLH-150
200 ± 10.00	20 ± 4.0	D2ECL-200	D2ECLH-200
250 ± 12.50	25 ± 5.0	D2ECL-250	D2ECLH-250

** These part numbers do not have 5 equal taps. Specified Tap-to-Tap Delays are referenced to Tap 1: 2 ± 1 ns.



Physical Dimensions: inches (mm)



GENERAL: For Operating Specifications and Test Conditions, see Tables IV, V and VIII on page 7 of this catalog. Delays specified for the Leading Edge.

Tap Delays referenced to Input ± 5% or ± 2 ns
 Minimum Input Pulse Width, DECL 40% of total delay
 Minimum Input Pulse Width, D2ECL 25% of total delay
 Temperature Coefficient of Delay 300ppm/°C typical
 Supply Current, I_{EE}, DECL 60 mA typ., 75 mA max.
 Supply Current, I_{EE}, D2ECL 105 mA typ., 135 mA max.

MIL-GRADE: These Military Grade delay lines use integrated circuits screened to MIL-STD-883B with an operating temperature range of -55 to +125°C. Part numbers will have the suffix "M": DECL-XXXM, and D2ECL-XXXM. These MIL devices will have larger package height; consult factory for detailed data sheet.

VARIATIONS AVAILABLE. FOR INTERMEDIATE VALUES AND/OR CUSTOM DESIGNS PLEASE CONSULT THE FACTORY.

Specifications subject to change without notice.

D_2ECL-7/93