

Attenuators

7mm Precision Types

DC - 18 GHz Precision Performance

Frequency: DC - 18.0 GHz

Attenuation Values: 1 - 40 dB as noted

Attenuation Accuracy:

1 - 6 dB	± 0.3 dB
7 - 20 dB	± 0.5 dB
21 - 40 dB	± 0.7 dB
41 - 60 dB	± 1.5 dB

Impedance: 50 Ohms

VSWR: as noted

Power: as noted

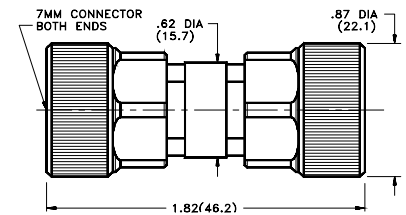
Peak Power: 200 Watts on 2 Watt units and 100 Watts on medium power units

Operating Temperature Range: -54C to +125C

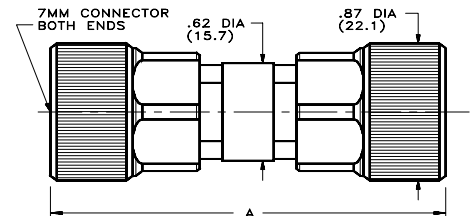
Finish: Black Anodized Aluminum and Stainless Steel Connectors



DC - 18.0 GHz	431 Series	Model Number
7mm Precision - Low VSWR		
ATT-0431-XX-7MM-02		
Attenuation Value = XX, Select 3, 6, 10, or 20 dB VSWR: 1.12 @ DC-4.0, 1.15 @ 4.0-8.0, and 1.20 @ 8.0-18.0 (GHz) max. Power: 2 Watts average @ +25 °C derated linearly to 0.5 Watts @ +125 °C		

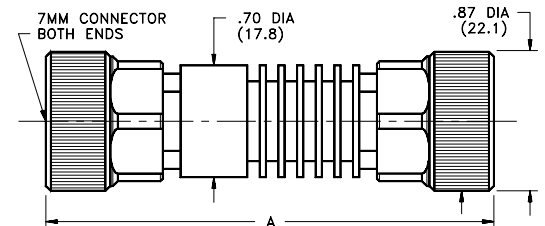


DC - 18.0 GHz	220 Series	Model Number
7mm Precision - Broadband Performance		
ATT-0220-XX-7MM-02		
Attenuation Value= XX, Select 1 thru 60 dB in 1 dB Increments VSWR: 1.07 + 0.015 f (GHz) Power: 2 Watts average @ +25 °C derated linearly to 0.5 Watts @ +125 °C		



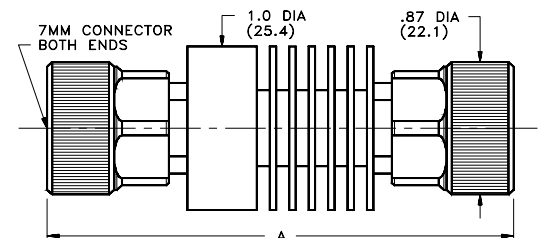
Attenuation	A
1 - 20 dB	2.19
21 - 60 dB	2.47

DC - 12.4 GHz	395 Series	Model Number
7mm Precision - 5 Watts		
ATT-0395-XX-7MM-02		
Attenuation Value = XX, Select 01 thru 40 dB in 1 dB increments VSWR: 1.06 + 0.02f (GHz) Power: 5 Watts average @ +25 °C derated linearly to 1 Watt @ +125 °C		



Attenuation	A
1 - 6 dB	2.68
7 - 40 dB	3.12

DC - 12.4 GHz	396 Series	Model Number
7mm Precision - 10 Watts		
ATT-0396-XX-7MM-02		
Attenuation Value = XX, Select 01 thru 40 dB in 1 dB increments VSWR: 1.06 + 0.02 f (GHz) max Power: 10 Watts average @ +25 °C derated linearly to 1 Watt @ +125 °C		



Attenuation	A
1 - 6 dB	2.68
7 - 40 dB	3.12