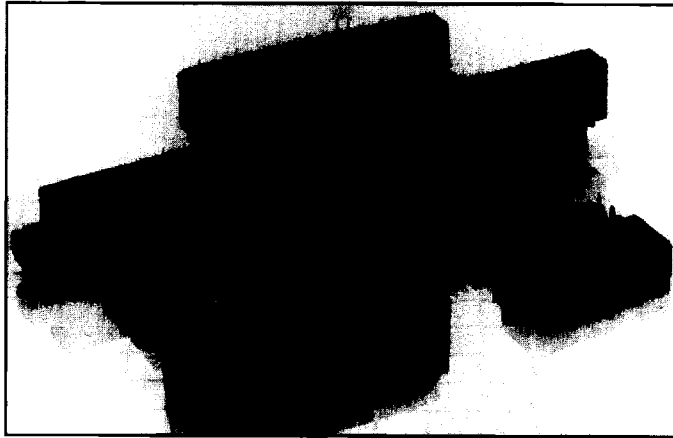


# .100" (2.54mm) Series 472 & 572 Dura Mate Card Edge Connector



.100 (2.54) Centers  
Card Edge  
Dip Solder Terminals



## PART NUMBER CODING X72-XXXXX-XX

### CONTACT PLATING

CONTACT SURFACE TERMINATION  
01 = TIN OVERALL (572 SERIES ONLY)  
03 = .000010 GOLD .000100 TIN/LEAD  
07 = .000020 GOLD .000100 TIN/LEAD  
CONSULT FACTORY FOR OTHER PLATING OPTIONS

### TERMINATION STYLE

01 = DIP SOLDER (STRAIGHT) .125 (3.18) LONG  
02 = DIP SOLDER (STRAIGHT) .187 (4.75) LONG  
03 = DIP SOLDER (STRAIGHT) .140 (3.56) LONG

### NUMBER OF CONTACTS (REFER TO CHART)

### MOUNTING STYLE

0 = NO MOUNTING EARS  
1 = WITH MOUNTING EARS  
.128 DIA. (3.25)

### SERIES (CONTACT STYLE)

472 = SEMI BELLOWS, PHOSPHOR BRONZE  
572 = SEMI BELLOWS, BRASS

## Features

- High durability
- Dual readout, semi bellows contacts
- Will accept printed circuit board thickness variation of .054" to .070" (1.37 to 1.78)
- Meets performance criteria of MIL-C-21097
- Card insertion depth — .300 (7.62)
- Available with mounting ears .128 (3.25) dia. holes and without mounting ears
- Vertical version only

## Specifications

**Operating Voltage:** 500 VAC rms at sea level

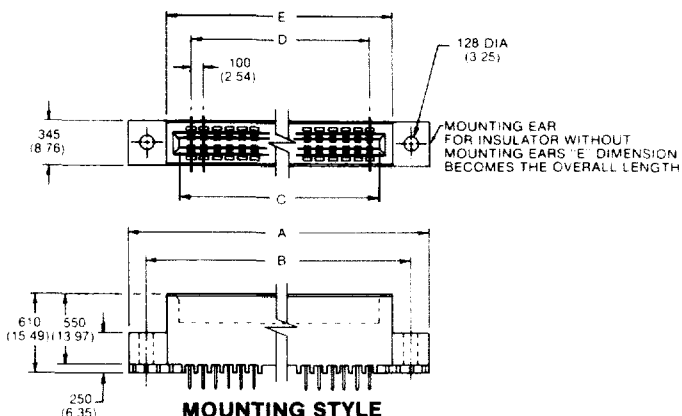
**Current Rating:** 3 Amp continuous

**Contact Resistance:** 6 milliohms at rated current

**Contact Material:** Copper alloy

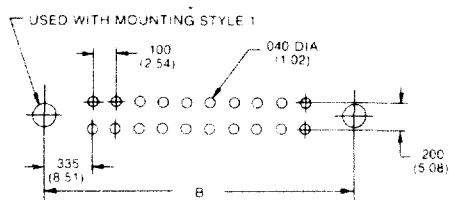
**Contact Plating:** See part number coding

**Insulator Material:** Polyester, glass filled, 94V-0 rated per MIL-M-24519, black

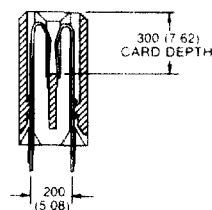


**MOUNTING STYLE**

0 — NO MOUNTING EARS  
1 — WITH MOUNTING EARS

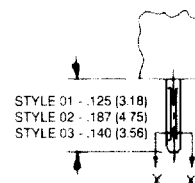


**MOUNTING PATTERN**

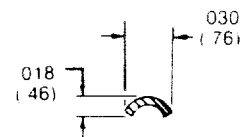


**SERIES 472  
SEMI BELLOWS**

**CONTACT STYLE**



**STYLE 01, 02, & 03**



**SECTION X-X**

**TERMINATION STYLE**

PART NUMBER	NUMBER OF CONTACTS	NUMBER OF CONTACTS				
		A	B	C	D	E
X72-X10XX-XX	10/20	1.830 (46.48)	1.570 (39.88)	1.100 (27.94)	.900 (22.86)	1.270 (32.26)
X72-X12XX-XX	12/24	2.030 (51.56)	1.770 (44.96)	1.300 (33.02)	1.100 (27.94)	1.470 (37.34)
X72-X13XX-XX	13/26	2.130 (54.10)	1.870 (47.50)	1.400 (35.56)	1.200 (30.48)	1.570 (39.88)
X72-X15XX-XX	15/30	2.330 (59.18)	2.070 (52.58)	1.600 (40.64)	1.400 (35.56)	1.770 (44.96)
X72-X17XX-XX	17/34	2.530 (64.26)	2.270 (57.66)	1.800 (45.72)	1.600 (40.64)	1.970 (50.04)
X72-X18XX-XX	18/36	2.630 (66.80)	2.370 (60.20)	1.900 (48.26)	1.700 (43.18)	2.070 (52.58)
X72-X20XX-XX	20/40	2.830 (71.88)	2.570 (65.28)	2.100 (53.34)	1.900 (48.26)	2.270 (57.66)
X72-X22XX-XX	22/44	3.030 (76.96)	2.770 (70.36)	2.300 (58.42)	2.100 (53.34)	2.470 (62.74)
X72-X25XX-XX	25/50	3.330 (84.58)	3.070 (77.98)	2.600 (66.04)	2.400 (60.96)	2.770 (70.36)
X72-X28XX-XX	28/56	3.630 (92.20)	3.370 (85.60)	2.900 (73.66)	2.700 (68.58)	3.070 (77.98)
X72-X30XX-XX	30/60	3.830 (97.28)	3.570 (90.68)	3.100 (78.74)	2.900 (73.66)	3.270 (83.06)
X72-X31XX-XX	31/62	3.930 (99.82)	3.670 (93.22)	3.200 (81.28)	3.000 (76.20)	3.370 (85.60)

ALL DIMENSIONS ARE IN INCHES  
DIMENSIONS IN ( ) ARE IN MILLIMETERS