

13000 series

Professional quick-break momentary pushbutton switches

Distinctive features and specifications

UG1006-A



- ☐ PC and panel mount models
- ☐ Bushing Ø 6,35 (1/4) and 11,9 (15/32)
- ☐ UL and CECC approved

ELECTRICAL SPECIFICATIONS

- Max. current/voltage rating with resistive load :
 - silver contacts (A-AD2) : 2A 250VAC - 4A 125VAC - 4A 30VDC
 - gold plated contacts (CD) : 100mA 30V
- Minimum load (AD2-CD contacts) : 10mA 50mV, 10µA 5V min.
- Initial contact resistance : 10 mΩ max.
- Insulation resistance : 1.000 MΩ min. at 500VDC
- Dielectric strength :
 - 1.000 Vrms 50 Hz min. between terminals
 - 2.000 Vrms 50 Hz min. between poles and between terminals and frame
- Contact bounce : 2 ms max.
- Electrical life :

Contacts	Max. current/voltage rating	Number of cycles
A	2A 250VAC - 4A 125VAC - 4A 30VDC	50.000
AD2	2A 250VAC - 4A 125 VAC - 4A 30VDC (gold plating : 100mA 30VDC max.)	20.000
CD	100mA 30VDC	50.000
	Low level or mechanical life	150.000

MATERIALS

- Case : diallylphthalate (DAP)
- Actuator : brass, nickel plated
- Bushing : brass, nickel plated
- Housing : brass, nickel plated
- Contacts : **A** : silver
- **AD2** : silver, gold plated
(2 micron gold)
- **CD** : brass, gold plated
- Terminal seal : epoxy

Note : AD2 contacts can be used for high level applications. In this case, the gold layer is considered only as a protection against oxidation during storage.

GENERAL SPECIFICATIONS

- Torque : 1,25 Nm (.922 Ft.lb)
max. applied to nut
- Standard panel thickness : 2 mm
(.078) max.
- Total travel : 2 mm (.078)
- Operating temperature :
-40°C to +85°C

13000 series

Professional quick-break momentary pushbutton switches

Specifications

RELIABILITY - RUN-IN TEST

Upon request, each individual switch can be submitted to a low level run-in test of 50 or 250 cycles to ensure suitability for special applications requiring a very high level of reliability (military, space, etc.).

AGENCY APPROVALS



CECC 96401-001

Designed to **MIL** specifications

Availability :

UL : all models with silver or gold plated silver contacts

CECC : consult factory for details of approved models.

Marking : to order switches marked UL or CECC, complete appropriate box of ordering format.

Dimensions : first dimensions are in mm while inches are shown as bracketed numbers.



Sealing boots are available to protect the switches against dust and water. They are presented in section H.



Mounting accessories : standard hardware supplied with all models : 2 hex nuts 8 mm (.314) across flats, 1 locking ring and 1 lockwasher.

Standard and special hardware available are presented in section I.

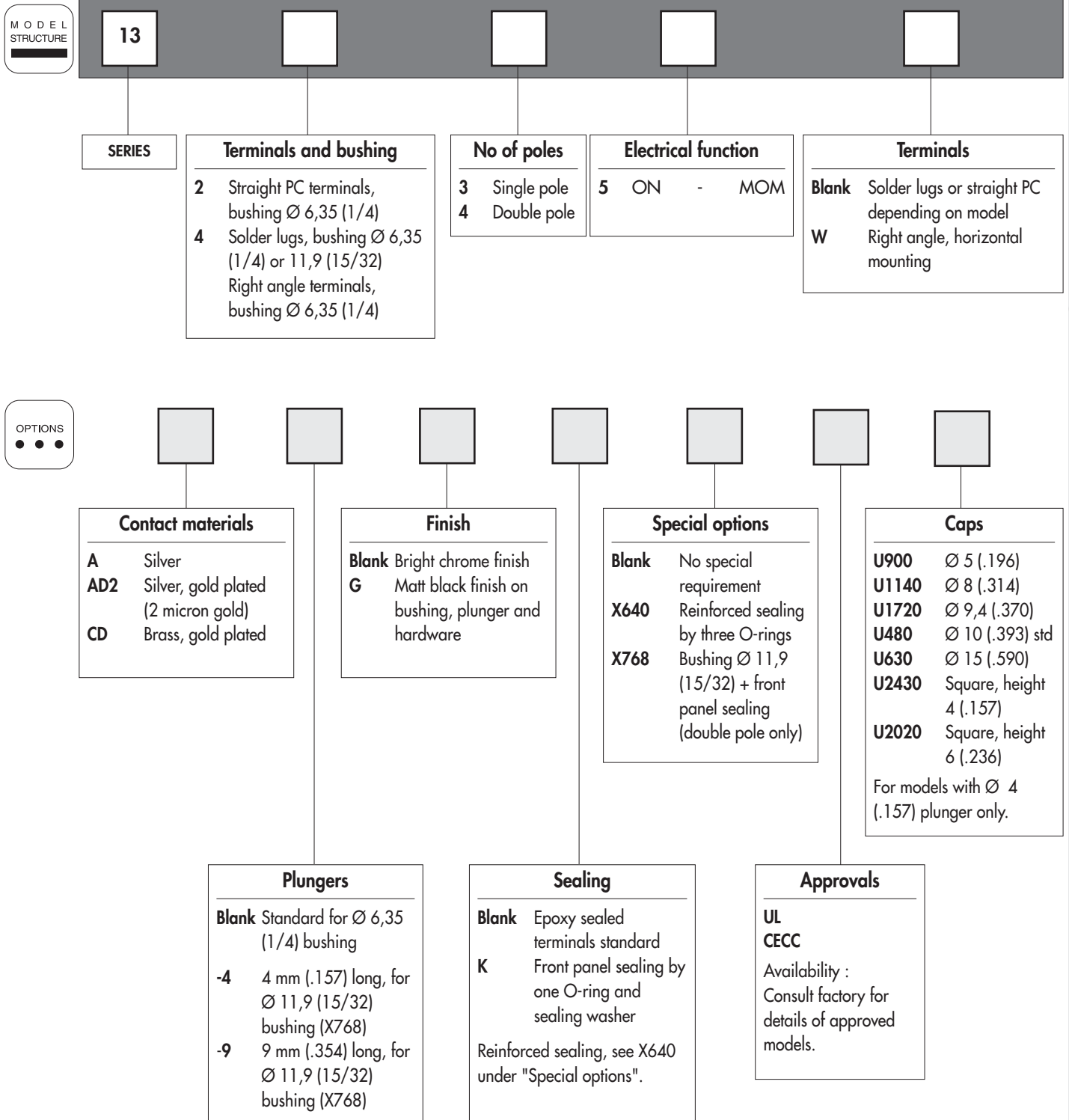


Packaging unit : 50 pieces.

13000 series

Professional quick-break momentary pushbutton switches

Overview



NOTICE : please note that not all combinations of above numbers are available. Refer to the following pages for further information.

ABOUT THIS SERIES

On the following pages, you will find successively :

- model structure of switches
- options in the same order as in above chart

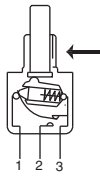
13000 series

Professional quick-break momentary pushbutton switches

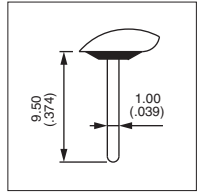
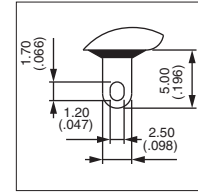
Solder lug terminals : 13400 - Straight PC terminals : 13200

MODEL
STRUCTURE

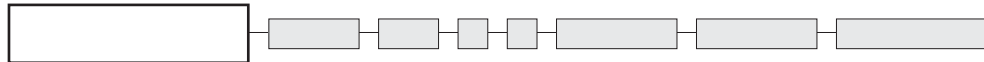
→ Keyway



- Threaded bushing $\varnothing 6,35$ mm (1/4)
- Epoxy sealed terminals standard



MODEL
STRUCTURE



Solder lug terminals : 13400

→ Keyway



Single pole
13435

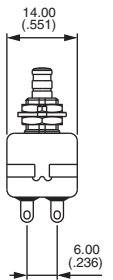
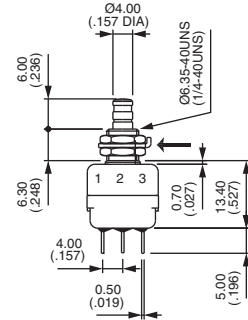
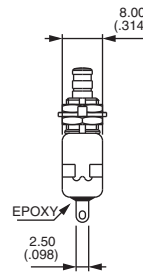
Double pole
13445



ON



MOM



Straight PC terminals : 13200

→ Keyway



Single pole
13235

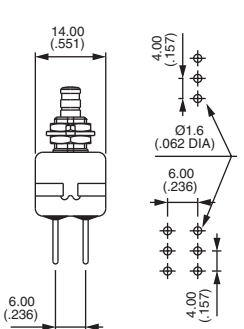
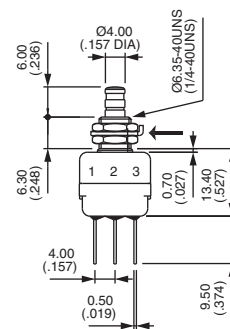
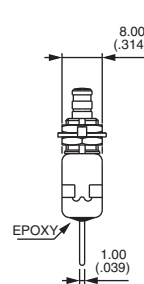
Double pole
13245



ON

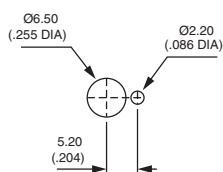


MOM

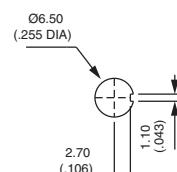


PANEL CUT-OUT

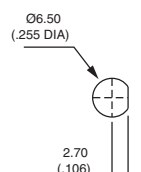
13400 - 13200



Standard



With K
sealing option



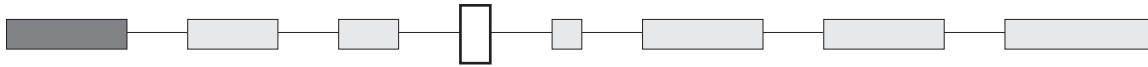
With X640
sealing option

13000 series

Professional quick-break momentary pushbutton switches

OPTIONS
● ● ●

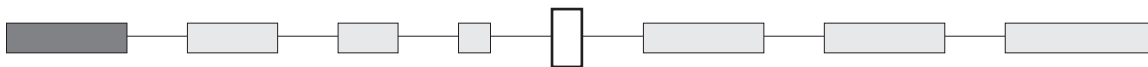
FINISH



Blank Bright chrome finish

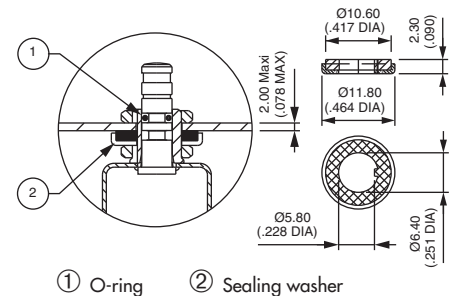
G Matt black finish on bushing, actuator and hardware

SEALING

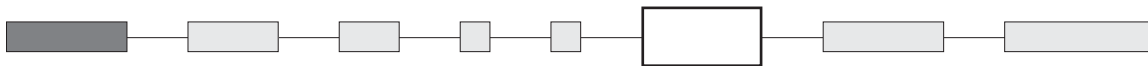


K Front panel sealing by one O-ring and sealing washer. Protects the switch against water and dust. Panel seal withstands 1 bar pressure and remains sealed even when switch is operated.

Reinforced sealing : see X640 under "Special options".



SPECIAL OPTIONS

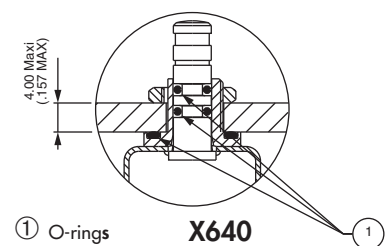


X640 Front panel sealing by three O-rings. Flatted bush for precise orientation. Protects the switch against water and dust. Panel seal withstands 1 bar pressure and remains sealed even when switch is operated.



Available on models with Ø 6,35 (1/4) bushing only.

X935 C-ring on plunger for positive stop

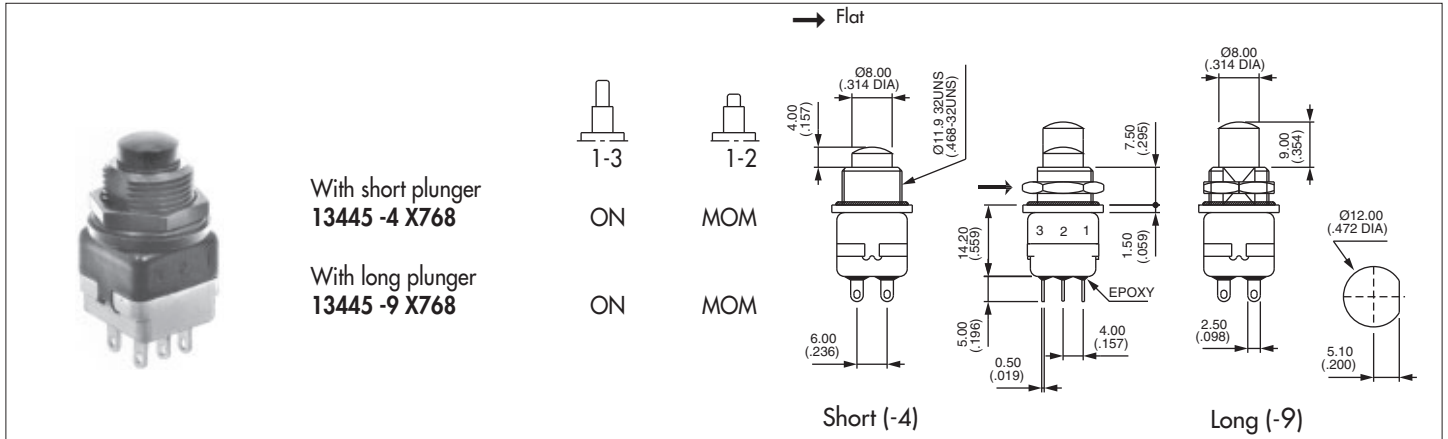




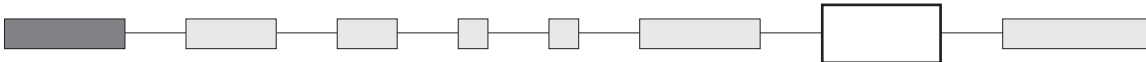
13000 series

Professional quick-break momentary pushbutton switches

X768 Sealed switch with $\varnothing 11,9$ (15/32) flatted bushing. Chrome plated actuator. Solder lug terminals, double pole. Contact and finish options available.



AGENCY APPROVALS



UL

CECC CECC 96401-001

Availability :

UL : all models with silver or gold plated silver contacts

CECC : consult factory for details of approved models.

Marking : to order switches marked UL or CECC, please complete above box with desired approval.

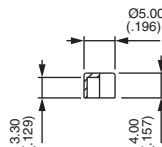
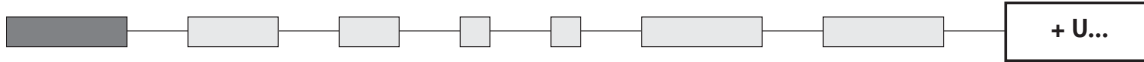
Blank : no agency approval required.

13000 series

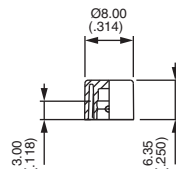
Professional quick-break momentary pushbutton switches

OPTIONS
● ● ●

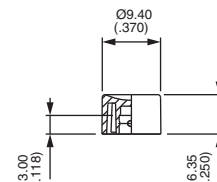
CAPS



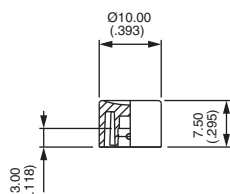
U900



U1140

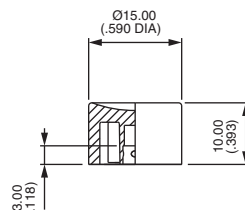


U1720

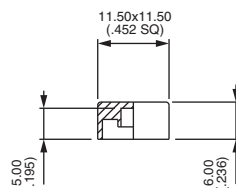


U480

Standard

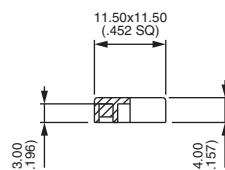


U630



U2020

Square



U2430

Square



For models with Ø 6,35 (1/4) bushing only.

Cap colours

Replace last "0" by number

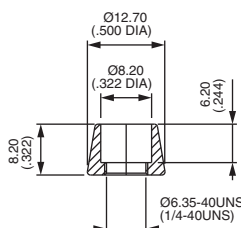
1	blue
1/4	dark blue
2	black
3	green
4	grey
5	yellow
6	red
7	ivory
7/1	white
9	orange

DRESS NUTS

Chrome plated

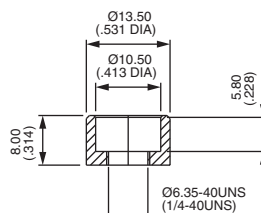


For models with Ø 6,35 (1/4) bushing only.



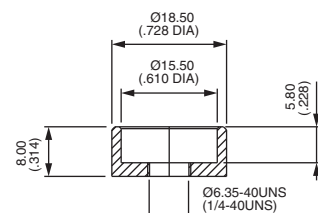
U1636

For cap U1140



U840

For cap U480



U825

For cap U630

Dress nuts are to be ordered separately.