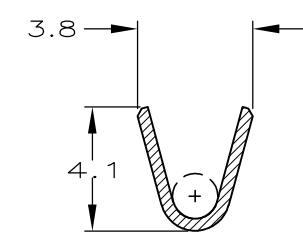
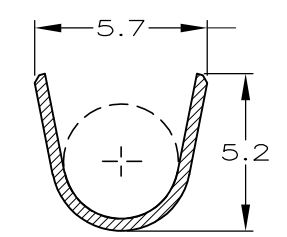


SEZIONE A-A  
(SECTION A-A)

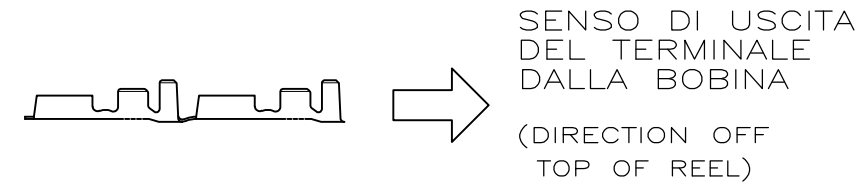


SEZIONE B-B  
(SECTION B-B)



- 1 BOBINATO CON CARTA INTERPOSTA (REELED WITH INTERLEAVE PAPER STRIP).
- 2) SPECIFICA DI PRODOTTO 108-20019. (PRODUCT SPEC. 108-20019)  
SPECIFICA DI AGGRAFFATURA 114-20023. (APPLICATION SPEC. 114-20023).
- 3 P/N CON ALTA FORZA DI ESTRAZIONE (SUITABLE FOR HIGHER EXTRUCTION FORCE APPLICATION).
- 4 OBSOLETE PARTS: OBSOLETE CIS STREAMLINING PER D.RENAUD/D.SINISI

STATO DI FORNITURA - SCALA 1:1  
(SUPPLYING CONDITION - SCALE 1:1-)



	4	1	STAGNATO (TIN PLTD)	OTTONE (BRASS)	1-280001-3	AH
	3		STAGNATO (TIN PLTD)	OTTONE (BRASS)	1-280001-2	AH
	3		NUDO (UNPLATED)	OTTONE (BRASS)	1-280001-1	AH
			NUDO (UNPLATED)	OTTONE (BRASS)	1-280001-0	AG
			STAGNATO (TIN PLTD)	OTTONE (BRASS)	0-280001-9	AG
PEZZO SCIOLTO P/N (LOOSE PIECE P/N)	NOTE		FINITURA / COLORE (FINISH / COLOUR)	MATERIALE (MATERIAL)	NUMERO (PART NO)	REV.
			CUSTOMER DWG. FOR REFERENCE ONLY		DISEGNO PER CLIENTE SOLO PER RIFERIMENTO	
			THIS DRAWING IS UNPUBLISHED		RELEASE FOR PUBLICATION	19
			© COPYRIGHT 19 BY ,		ALL INTERNATIONAL RIGHT RESERVED.	
			TOLLERANZE: SE NON DIVERSAMENTE SPECIFICATO (TOLERANCES: UNLESS OTHERWISE SPECIFIED)	DIAM. ISOLANTE (INS. DIA. RANGE)	RANGO FILO (WIRE RANGE)	SCALA (SCALE)
			± 0.3	3-4.3 mm	1.0-2.5 mm <sup>2</sup>	4:1
			ANGOLI (ANGLES)	TE Connectivity		
			DIS. 4 JUL 96 (DR.) A. FROLA	DESCRIZIONE (DESCRIPTION) FASTON® Connector		
			CONT. 4 JUL 96 (CHK) C. TARTARI	.250" sr. REC. CONTACT		
AH5	REVISED PER ECO-11-005140	RK	05APR 11	LOC. SIZE	NUMERO (DWG NO)	REV. FOGLIO (SHEET)
REV. (REV. LTR.)	REVISIONI (REVISION RECORD)	DIS. DATA (DR) (DATE)	APP. (APP.)	1	A3 C-280001	AH5 1 (OF) 1

DISTRIBUZIONE (PRINT. DIST.)