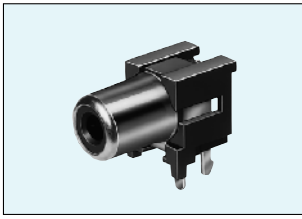


Horizontal Type Pin Jacks

Unit: mm

JPJ2018 Series

h = 8 mm



JPJ2018

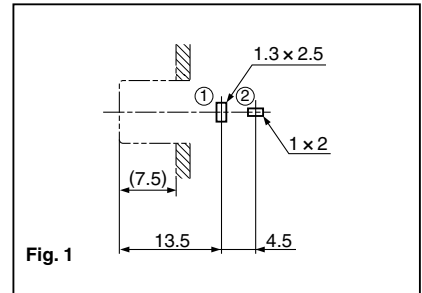
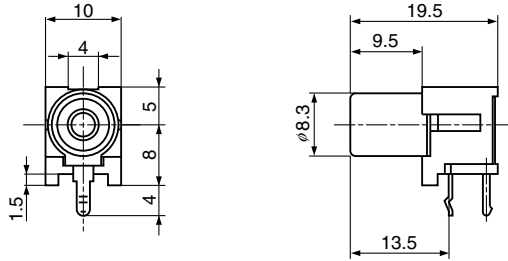


Fig. 1

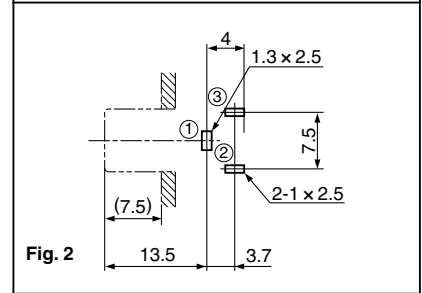


Fig. 2

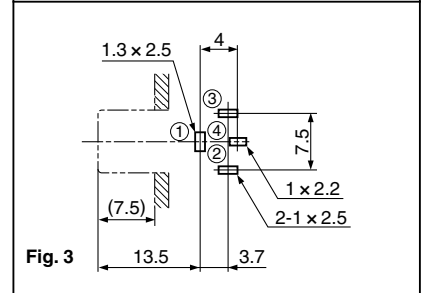
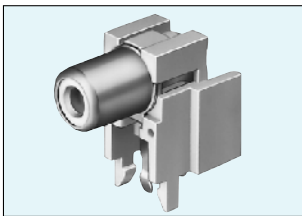


Fig. 3

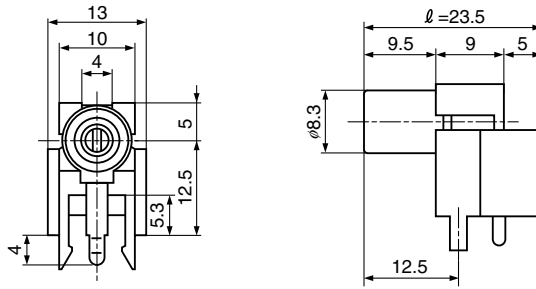
| Schematic | Housing Color | Cover | | | Hole Layout (Bottom view) |
|-----------|---------------|----------------|----------------|----------------|---------------------------|
| | | Ni Plated | Solder Plated | Au Plated | |
| | Black | JPJ2018-01-010 | JPJ2018-01-510 | JPJ2018-01-810 | Fig. 1 |
| | Red | JPJ2018-01-020 | JPJ2018-01-520 | JPJ2018-01-820 | |
| | White | JPJ2018-01-030 | JPJ2018-01-530 | JPJ2018-01-830 | |
| | Yellow | JPJ2018-01-040 | JPJ2018-01-540 | JPJ2018-01-840 | |
| | Blue | JPJ2018-01-050 | JPJ2018-01-550 | JPJ2018-01-850 | |
| | Black | JPJ1018-01-010 | | | Fig. 2 |
| | Red | JPJ1018-01-020 | | | |
| | White | JPJ1018-01-030 | | | |
| | Yellow | JPJ1018-01-040 | | | |
| | Blue | JPJ1018-01-050 | | | |
| | Black | JPJ4018-01-010 | | | Fig. 3 |
| | Red | JPJ4018-01-020 | | | |
| | White | JPJ4018-01-030 | | | |
| | Yellow | JPJ4018-01-040 | | | |
| | Blue | JPJ4018-01-050 | | | |

JPJ2723 Series

h = 12.5 mm



JPJ2723



Available $\ell = 18.5$ Versions

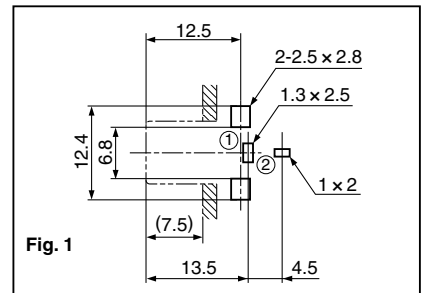


Fig. 1

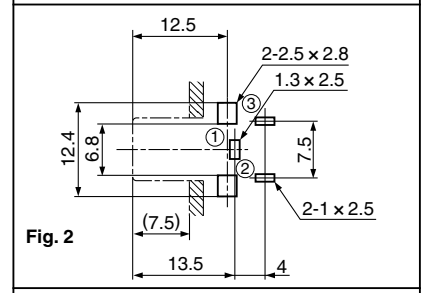


Fig. 2

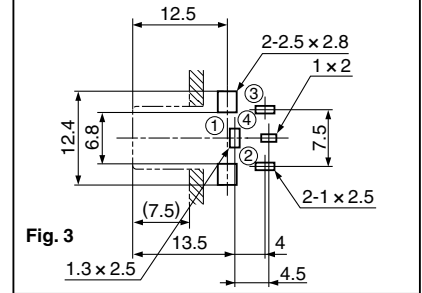


Fig. 3

| Schematic | Housing Color | Cover | | | Hole Layout (Bottom view) |
|-----------|---------------|----------------|----------------|----------------|---------------------------|
| | | Ni Plated | Solder Plated | Au Plated | |
| | Black | JPJ2723-01-010 | JPJ2723-01-015 | JPJ2723-01-810 | Fig. 1 |
| | Red | JPJ2723-01-020 | JPJ2723-01-025 | JPJ2723-01-820 | |
| | White | JPJ2723-01-030 | JPJ2723-01-035 | JPJ2723-01-830 | |
| | Yellow | JPJ2723-01-040 | JPJ2723-01-045 | JPJ2723-01-840 | |
| | Blue | JPJ2723-01-050 | JPJ2723-01-055 | JPJ2723-01-850 | |
| | Black | JPJ1723-01-010 | JPJ1723-01-515 | JPJ1723-01-815 | Fig. 2 |
| | Red | JPJ1723-01-020 | JPJ1723-01-525 | JPJ1723-01-825 | |
| | White | JPJ1723-01-030 | JPJ1723-01-535 | JPJ1723-01-835 | |
| | Yellow | JPJ1723-01-040 | JPJ1723-01-545 | JPJ1723-01-845 | |
| | Blue | JPJ1723-01-050 | JPJ1723-01-555 | JPJ1723-01-855 | |
| | Black | JPJ1724-01-010 | JPJ1724-01-515 | | Fig. 3 |
| | Red | JPJ1724-01-020 | JPJ1724-01-525 | | |
| | White | JPJ1724-01-030 | JPJ1724-01-535 | | |
| | Yellow | JPJ1724-01-040 | JPJ1724-01-545 | | |
| | Blue | JPJ1724-01-050 | JPJ1724-01-555 | | |