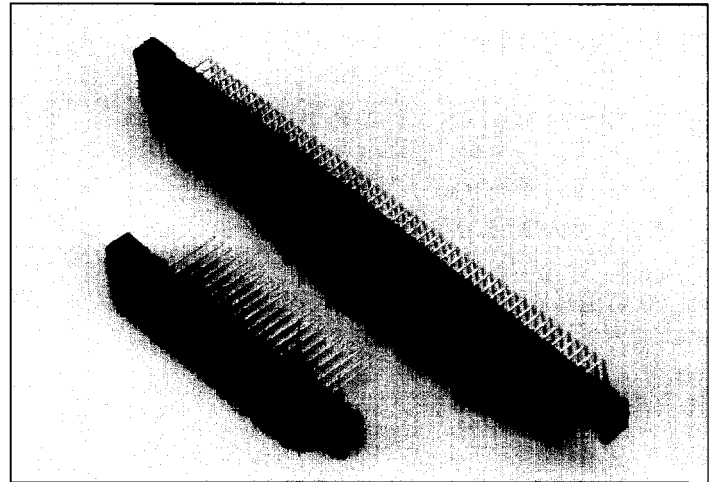


### .100 x .150

#### Features

- Reliable, durable cantilever contacts.
- .025" square contact tails in solder-to-board, wire wrap, and right-angle configurations.
- UL 94V-0 thermoplastic insulator. Available in numerous mounting ear types and in popular sizes.
- Selective gold plating available.



No. of Contact Positions	A	B	C	D	E
06/12	1.475 (37.47)	1.175 (29.85)	.868 (22.05)	.707 (17.96)	.500 (12.70)
10/20	1.875 (47.63)	1.575 (40.01)	1.268 (32.21)	1.107 (28.12)	.900 (22.86)
12/24	2.075 (52.71)	1.775 (45.09)	1.468 (37.29)	1.307 (33.20)	1.100 (27.94)
15/30	2.375 (60.33)	2.075 (52.71)	1.768 (44.91)	1.607 (40.82)	1.400 (35.56)
18/36	2.675 (67.95)	2.375 (60.33)	2.068 (52.53)	1.907 (48.44)	1.700 (43.18)
20/40	2.875 (73.03)	2.575 (65.41)	2.268 (57.61)	2.107 (53.52)	1.900 (48.26)
22/44	3.075 (78.11)	2.775 (70.49)	2.468 (62.69)	2.307 (58.60)	2.100 (53.34)
25/50	3.375 (85.73)	3.075 (78.11)	2.768 (70.31)	2.607 (66.22)	2.400 (60.96)
28/56	3.675 (93.35)	3.375 (85.73)	3.068 (77.93)	2.907 (73.84)	2.700 (68.58)
30/60	3.875 (98.43)	3.575 (90.81)	3.268 (83.01)	3.107 (78.92)	2.900 (73.66)
31/62	3.975 (100.97)	3.675 (93.35)	3.368 (85.55)	3.207 (81.46)	3.000 (76.20)
35/70	4.375 (111.13)	4.075 (103.51)	3.768 (95.71)	3.607 (91.62)	3.400 (86.36)
36/72	4.475 (113.67)	4.175 (106.05)	3.868 (98.25)	3.707 (94.16)	3.500 (88.90)
40/80	4.875 (123.83)	4.575 (116.21)	4.268 (108.41)	4.107 (104.32)	3.900 (99.06)
50/100	5.875 (149.23)	5.575 (141.61)	5.268 (133.81)	5.107 (129.72)	4.900 (124.46)

#### Specifications

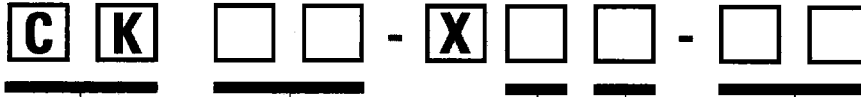
Current Rating:	3 Amperes
Contact Resistance:	6 Milliohms Max.
Dielectric Withstanding Voltage:	1000 VAC RMS (Sea Level)
Insulation Resistance:	5000 Megohms Min.
Operating Temperature:	-65°C to +125°C
Insertion Force:	10 oz. Max. per Pair
Withdrawal Force:	1 oz. Min. per Pair
Insulator Material:	Thermoplastic Glass Filled Polyester, Rated 94V-0
Contact Material & Finish:	See Ordering Code
Mounting Inserts & Bushings Material & Finish:	Brass-Nickel Plated

Polarization – Order polarization keys separately.  
Between contact key – Eby P/N 9775-508-02.

**Specifications are subject to change without notice.  
For special requirements consult factory.**

**.100 x .150**

### Ordering Code



Series

Number of Dual Positions

06, 10, 12, 15, 18, 20, 22, 25, 28, 30, 31, 35, 36, 40, 50  
(see chart for standard sizes)

Contact Terminations & Lengths

- A - Printed Circuit-Straight (.12 Tail Length Min.)
- B - Solderless Wrap (.56 Tail Length Min.)
- H - Printed Circuit-Right Angle

Mounting Types

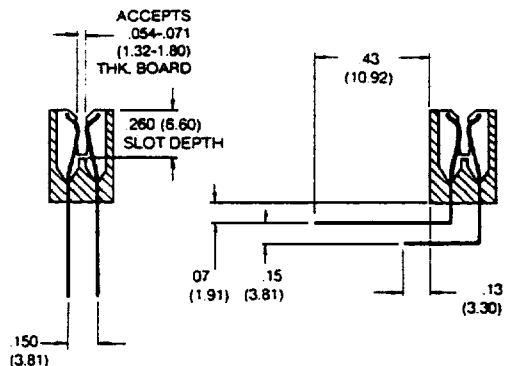
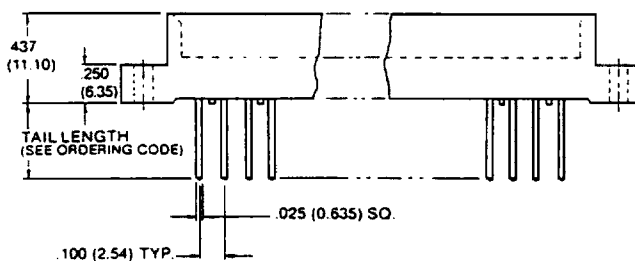
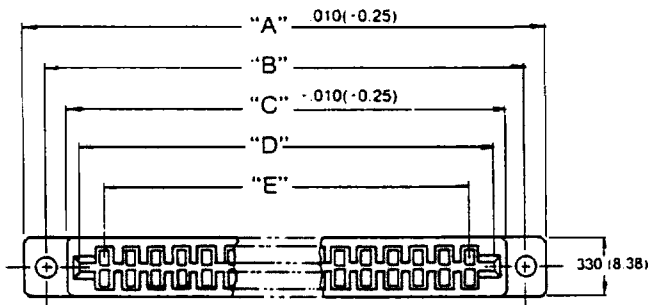
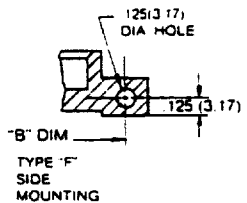
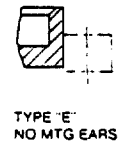
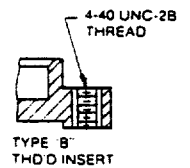
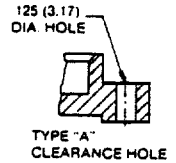
- A - .125 Dia. Clearance Holes
- B - #4-40 Threaded Inserts
- E - No Mounting Ears
- F - Side Mounting (For Right Angle)

Contact Material and Finish

- 13 - CA #725 - .000030" Selective Gold\* over Nickel
- 51 - CA #725 - .000100" Tin over Nickel

\*Selective Gold is on the male/female engaging area.

### MOUNTING TYPES



4300 "H" Street • Philadelphia, PA 19124

1-800-eby-3430; (215) 537-4700; Fax: (215) 537-4780