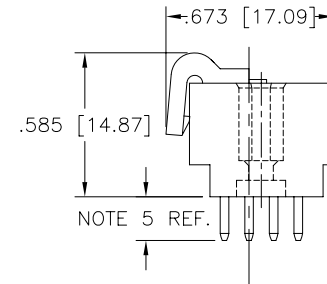
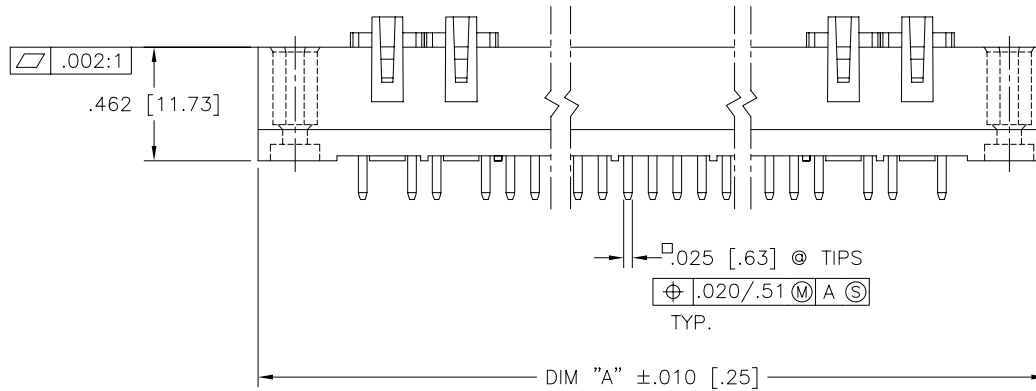
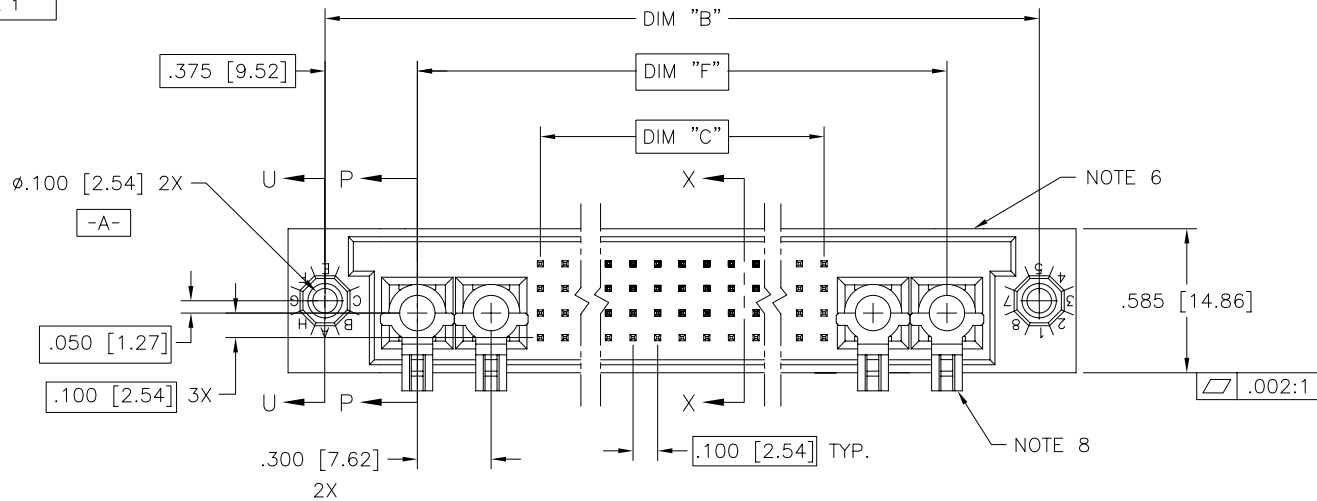


PRODUCT NUMBER
SEE NOTE 1

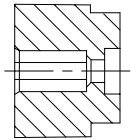


Copyright FCI

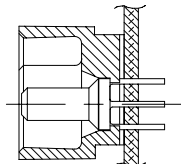
mat'l. code NOTE 3		surface ISO 1302 ✓	tolerance ISO 406 ISO 1101	projection INCH/MM	product family HPC
ltr	ecn no	dr	date	tolerances unless otherwise specified	title
A	V22185	RDS	5/11/92	angles .xx±.01/.3	4 ROW VERTICAL HEADER SOLDER TAIL, 0 G.P., 4 P.P.
B	V40262	PDP	1/14/94	linear .xxx±.005/.13	
C	V41237	GAH	8/17/94	0'±2' .xxxx±.0020/.05	scale 1:1
D	V91069	HTB	5/17/99	dr D.SHEAFFER 5/4/92	dwg no
E	V00274	JWS	2/2/00	enr S.CLARK 5/11/92	sheet 1 of 2 size
F	M06-0260	MHT	7/07/06	chr S.CLARK 5/11/92	50537 A3
				appd S.CLARK 5/11/92	type Product Customer Drawing
sheet index	revision sheet	F	F		
		1	2		

form: A3

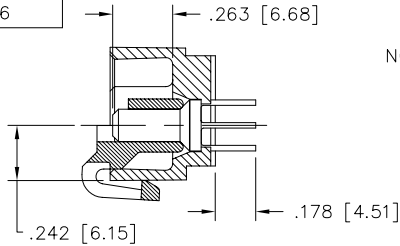
PRODUCT NUMBER	DIM.	LENGTH FORMULAS
SEE NOTE 1	DIM "A"	.100/2.54 x NO. OF COLUMNS +1.95/49.5
	DIM "B"	.100/2.54 x NO. OF COLUMNS +1.650/41.91
	DIM "C"	.100/2.54 x NO. OF COLUMNS -.100/2.54
	DIM "F"	.100/2.54 x NO. OF COLUMNS +.900/22.86



SECTION U-U



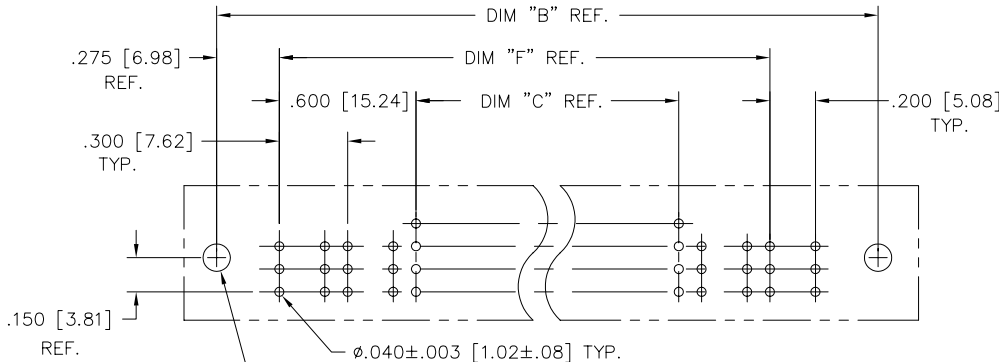
DETAIL P
(INSTALLED IN
PCB, NOTE 8)



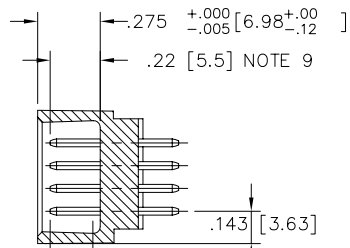
SECTION P-P
(W/LOCATOR,
SEE DETAIL P)

NOTES:

- PRODUCT NUMBERING CODE:
50537 - X YYY Z
TAIL LENGTH (NOTE 5)
NO. OF POSITIONS (NOTE 2)
PLATING (NOTE 4)
BASE NUMBER
- PRODUCT NUMBERING CODE FOR
SELECT LOAD PART NUMBERS:
50537 - XYYYY
SEQUENCE NUMBER
ALWAYS 'XX'
BASE NUMBER
- THIS PRODUCT IS CONFIGURED IN SIZES OF
6 THRU 80 COLUMNS IN INCREMENTS OF ONE.
i.e.: 6,7,8,9,.....78,79,80.
- HOUSING MATERIAL: GLASS AND MINERAL FILLED
HIGH TEMP. THERMOPLASTIC. FLAME RETARDANT PER
UL94V-0. COLOR: BLACK.
PIN MATERIAL: PHOS BRONZE
- PLATING CONTACT AREA OPTIONS:
A = 50u" Ni UNDER ALL WITH 30u" Au ON
CONTACT AREA, SnPb ON PCB INTERFACE
AND Au FLASH ON ALL OTHER AREAS.
- TAIL LENGTH OPTIONS: (±.015/.38)
A = .177/4.5
J = .120/3.05
- MANUFACTURE'S NAME, PART NUMBER AND LOT CODE TO
APPEAR ON THIS SURFACE PER BUS-12-108.
- FOR DOCUMENTATION MENU, SEE BUS-01-057.
- POWER PIN LOCATOR (REF. 50234) TO BE REMOVED
AFTER SOLDERING.
- REFERENCE 50801 FOR F.M.L.B. OPTIONS AND
WORKSHEET.



RECOMMENDED PCB LAYOUT
(ALL HOLES LOCATED ON .100/2.54 GRID
UNLESS OTHERWISE SPECIFIED)



SECTION X-X

mat'l. code		surface ISO 1302 ✓	tolerance ISO 406 ISO 1101	projection 	product family HPC
ltr		tolerances unless otherwise specified		INCH/MM scale 1:1	title 4 ROW VERTICAL HEADER SOLDER TAIL, 0 G.P., 4 P.P.
ecn	no dr	angles	linear		
F		0°±2'	.xx±.01/.3 .xxx±.005/.13 .xxxx±.0020/.05		
		dr	D.SHEAFFER	5/4/92	dwg no
		enr	S.CLARK	5/11/92	sheet 2 of 2 size
		chr	S.CLARK	5/11/92	50537
		appd	S.CLARK	5/11/92	A3
sheet index	revision sheet				type Product Customer Drawing