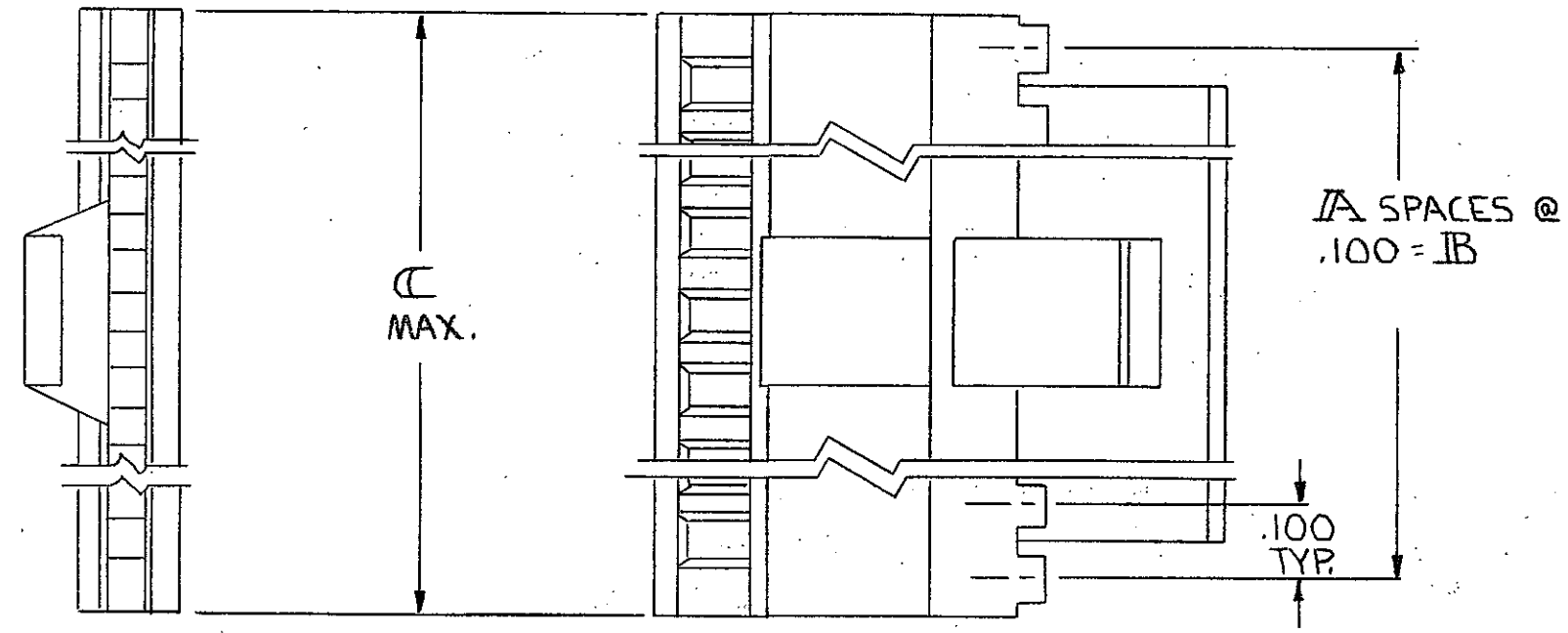
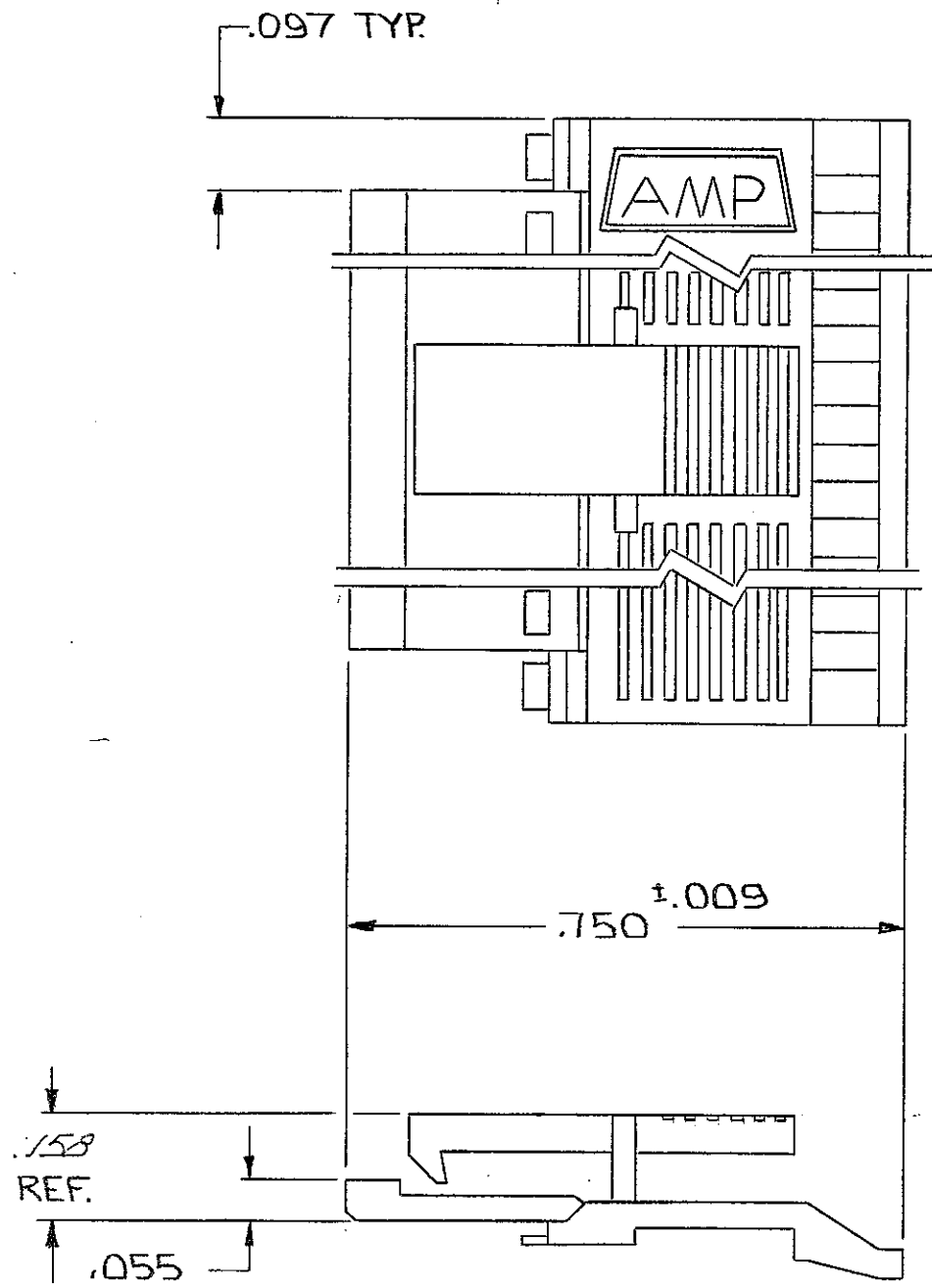


REVISIONS					
P	F	ZONE	LTR	DESCRIPTION	DATE APPROVED
0			E2	REVISED PER ECO-11-005140	31MAR11 HMR



- 1. NO. OF POS. PERTAINS TO HOUSING SIZE.
- 2. THIS COVER TO BE USED WITH 102536.
- ③ OBSOLETE PART NUMBER
- ④ OBSOLETE PARTS: OBSOLETE CIS STREAMLINING PER D.RENAUD/D.SINISI

3.600	3.500	35	72	3-102681	③-1
3.500	3.400	34	70	3-	③-0
3.400	3.300	33	68	2-	③-9
3.300	3.200	32	66	2-	③-8
3.200	3.100	31	64	2-	③-7
3.100	3.000	30	62	2-	③-6
3.000	2.900	29	60	2-	③-5
2.900	2.800	28	58	2-	③-4
2.800	2.700	27	56	2-	③-3
2.700	2.600	26	54	2-	③-2
2.600	2.500	25	52	2-	③-1
2.500	2.400	24	50	2-	-0
2.400	2.300	23	48	1-	③-9
2.300	2.200	22	46	1-	③-8
2.200	2.100	21	44	1-	③-7
2.100	2.000	20	42	1-	③-6
2.000	1.900	19	40	1-	-5
1.900	1.800	18	38	1-	③-4
1.800	1.700	17	36	1-	③-3
1.700	1.600	16	34	1-	-2
④ OBSOLETE	1.600	15	32	1-	-1
1.500	1.400	14	30	1-	-0
1.400	1.300	13	28		-9
1.300	1.200	12	26		-8
1.200	1.100	11	24		-7
④ OBSOLETE	1.100	10	22		-6
1.000	.900	9	20		-5
.900	.800	8	18		-4
.800	.700	7	16		-3
.700	.600	6	14		-2
.600	.500	5	12	102681-1	
C	B	A	NO. OF POS.	PART NO	

UNLESS OTHERWISE SPECIFIED DIMENSIONS ARE IN INCHES. TOLERANCES ON: DECIMALS ±.005 ANGLES ±	CONTRACT NO	TE Connectivity NAME COVER-HALF, LATCH, MASS TERMINATION, AMPMODU, .100 €, FULL BAR POLARIZATION		
	MATERIAL FLAME RETARDANT THERMOPLASTIC COLOR= BLACK FINISH			
	DSGN APPD	SIZE	CODE IDENT NO	DRAWING NO
	OTHER APPD	C	00779	102681
		SCALE	SHEET 1 OF 1	