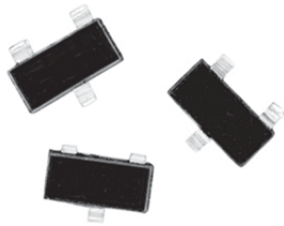


Molded, SOT-23 Resistor/Capacitor Network



Vishay's R/C Network, packaged in the standard SOT-23, can be strategically placed on your PC board to do localized filtering. The R/C Network can be located at the point of emission before transients are carried through the design. The sophisticated process of integrating the Resistor and Capacitor on a single substrate provides you with higher performance and more consistent results over discrete components. A real estate savings will also be gained. Applications include EMI/RFI suppression and AC termination. These networks, in the SOT-23, along with Vishay's high component count R Networks and R/C Networks in a variety of standard IC packages, provides you with the exact solution for your redesign or new design. Visit our website for the total picture on available R Networks and R/C Networks from our guaranteed stock program.

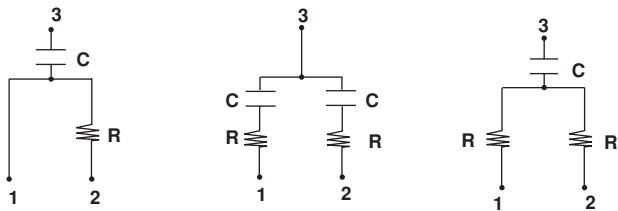
FEATURES

- Resistor and capacitor **integrated** into a Thin Film Network
- Filters at the source of emissions
- More consistent performance characteristics than discretes

TYPICAL PERFORMANCE

	TCR	TOLERANCE
RESISTOR	200	10%
	TCC	TOLERANCE
CAPACITOR	200	20%

SCHEMATICS



D Tapped Filter **C** AC Termination **A** T Filter

VR TOOLED VALUES*		
SCHEMATIC	R (Ohms)	C (pF)
D	33	47
C	47	47
A	100	80

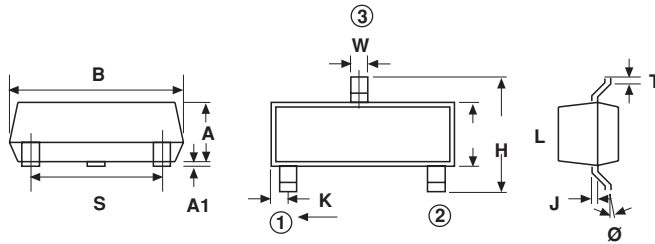
*Consult Applications Engineering for Custom Values.

STANDARD ELECTRICAL SPECIFICATIONS

TEST	SPECIFICATIONS	CONDITIONS
Resistance Range	10Ω to 500Ω	
TCR: Absolute	± 200ppm/°C	0°C to + 70°C
Tolerance: Absolute	± 10% standard (R)	
Absolute	± 20% standard (C)	@ 1MHz & VRMS over + 10°C to + 70°C
Power Rating: Package	1W @ 70°C	
Power Rating / Resistor	100mW	
Capacitance Range (pF)	10 - 80	
Breakdown Voltage	25 - 45V	
Operating Temperature Range	0 to + 70°C	
Storage Temperature Range	- 55°C to + 125°C	

VISHAY THIN FILM • FRANCE +33.4.93.37.28.24 FAX: +33.4.93.37.27.31 • GERMANY +49.9287.710 FAX: +49 9287.70435 • ISRAEL +972.3.557.0945 FAX: +972.3.558.9121
 • ITALY + 39.2.300.11919 FAX: +39.2.300.11999 • JAPAN +81.3.5464.6411 FAX: +81.3.5464.6433 • SINGAPORE +65.788.6668 FAX: +65.788.0988
 • SWEDEN +46.8.594.70590 FAX: +46.8.594.70581 • UK +44 191 514 8237 FAX: +44 1953 457 722 • USA: (610) 407-4800 FAX: (610) 640-9081

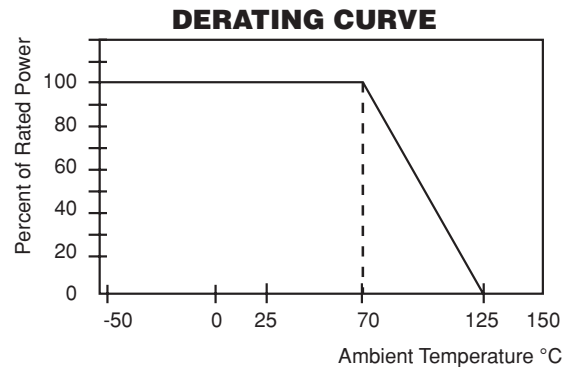
DIMENSIONS AND IMPRINTING in inches and millimeters



JEDEC STANDARD TO-236				
DIMENSION	INCHES		MILLIMETERS	
	MIN	MAX	MIN	MAX
A	0.027	0.040	0.70	1.02
A1	0.001	0.004	0.02	0.15
B	0.105	0.120	2.67	3.04
S	0.071	0.079	1.80	2.00
W	0.015	0.021	0.38	0.54
L	0.083	1.03	2.10	2.64
H	0.047	0.055	1.20	1.40
T	0.024	0.010	0.13	0.40
J	0.003	0.008	0.089	0.15
K	0.017	0.022	0.44	0.55
Ø	0	8°	0	8°

IMPRINTING	
	SCHEMATIC
VRA	AA
VRC	AC
VRD	AD

MECHANICAL SPECIFICATIONS	
Resistive Element	Tantalum Nitride
Capacitive Element	Thin Film
Substrate Material	Silicon
Body	Molded Epoxy
Terminals	Copper Alloy
Plating	Tin Lead
Lead Coplanarity	0.0005 Inches
Marking Resistance to Solvents	Permanency testing per MIL-STD-202, Method 215
Lead (Pb)-Free Option	100% Sn Matte
Lead (Pb)-Free Finish	Plated



PACKAGING INFORMATION		
MODEL	LEADS	TAPE AND REEL
VR	3	3000

How to Order

MODEL	Schematic	Resistance Value (Code Ω)/Capacitor Tolerance (Code pF)	Packaging
VR	D = Tapped Filter C = AC Terminator A = T Filter	xxxK/xxxM <div style="border: 1px solid black; padding: 2px; display: inline-block;">First 2 digits are significant figures. Last digit specifies number of zeros to follow.</div> <div style="border: 1px solid black; padding: 2px; display: inline-block; margin-left: 100px;">K = 10% M = 20%</div>	Tape & Reel T/R

VRT (Lead-(Pb)-free Version)

Note: For lead (Pb)-free please consult factory.

VISHAY THIN FILM • FRANCE +33.4.93.37.28.24 FAX: +33.4.93.37.27.31 • GERMANY +49.9287.710 FAX: +49 9287.70435 • ISRAEL +972.3.557.0945 FAX: +972.3.558.9121
 • ITALY + 39.2.300.11919 FAX: +39.2.300.11999 • JAPAN +81.3.5464.6411 FAX: +81.3.5464.6433 • SINGAPORE +65.788.6668 FAX: +65.788.0988
 • SWEDEN +46.8.594.70590 FAX: +46.8.594.70581 • UK +44 191 514 8237 FAX: +44 1953 457 722 • USA: (610) 407-4800 FAX: (610) 640-9081