

SPECIFICATIONS

RF Coaxial Connector

Mechanical

Durability: 500 Cycles

MMCX Series

MMCX Straight For PCB Jack

Electrical

Nominal Impedance: 50Ω

Frequency Range: 0-6GHz

Working Voltage: 170 Vrms max

Dielectric Withstanding Voltage: 500 Vrms max.

Physical

Body: Copper Alloy

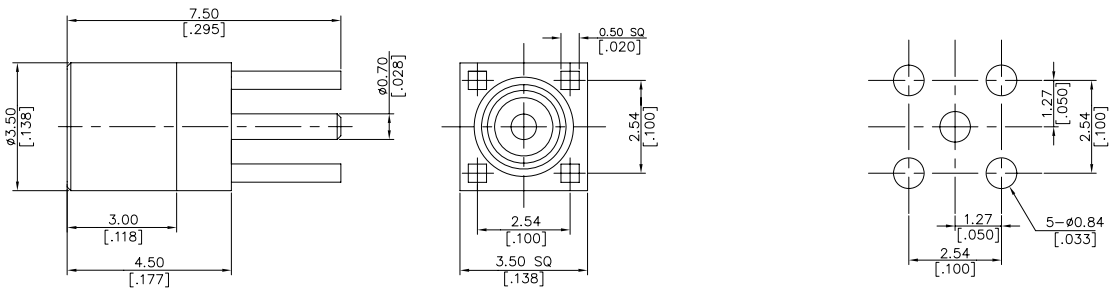
Insulator: Engineering Plastic

Contact: Copper Alloy

Plating: See "ORDERING INFORMATION"



DRAWING



RECOMMENDED PCB HOLE

ORDERING INFORMATION

PRODUCT NO. : KF 9 31 0 8 - 8 S02 - 4 Y

