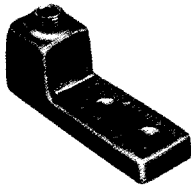


PANDUIT® Cast Copper Mechanical Connectors (Types HL-2 & HL-2N)

Copper Lugs

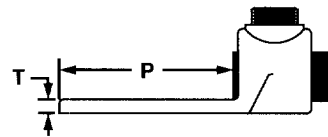
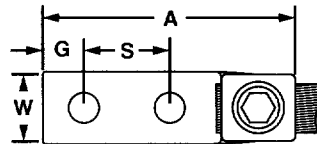
For Use With Copper Cables Only

Premium Single Barrel Lug Type HL-2 Two-Hole Straight Tongue

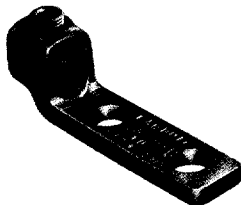


Part Number	Copper Conductor Size Range	Navy Cable & No.	Bolt Hole Size	Hex Key Size	W	P	A	G	S	T	Std. Pkg. Qty.
HL1-2-25-X	14 Sol. - 8 Str.	4-14	1/4"	**	.56	1.25	2.00	.31	.63	.19	10
HL4-2-X	8 Sol. - 4 Str.	23-40	1/4"	**	.56	1.25	2.00	.31	.63	.18	10
HL8-2-X	4 Sol. - 1 Str.	50-75	1/4"	7/16"	.75	1.50	2.44	.34	.75	.22	10
HL13-2-5	1 Str. - 2/0 Str.	100-125	5/16"	9/16"	.81	1.88	2.88	.44	1.00	.22	5
HL21-2-5	2/0 Str. - 4/0 Str.	150-200	3/8"	9/16"	1.00	1.75	3.00	.38	1.00	.25	5
HL30-2-2	4/0 Str. - 300 MCM	250-300	3/8"	5/8"	1.06	2.00	3.13	.44	1.00	.31	2
HL50-2-2	300 MCM - 500 MCM	400-500	3/8"	3/4"	1.38	2.00	3.44	.44	1.00	.34	2
HL75-2-1	500 MCM - 750 MCM	500-750	3/8"	7/8"	1.63	2.25	3.94	.56	1.13	.38	1
HL100-2-1	750 MCM - 1000 MCM	800-1000	1/2"	7/8"	1.88	2.50	4.44	.63	1.25	.50	1

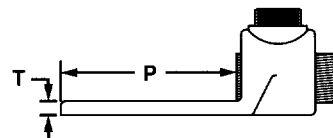
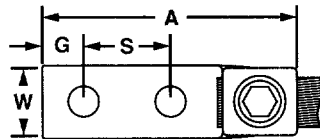
**Uses Slotted Head Set Screw



Premium Single Barrel Lug Type HL-2N Two-Hole Straight Tongue



Part Number	Copper Conductor Size Range	Navy Cable & No.	Bolt Hole Size	Hex Key Size	W	P	A	G	S	T	Std. Pkg. Qty.
▲ HL8-2N-X	4 Sol. - 1 Str.	50-75	1/2"	7/16"	1.00	3.00	3.94	.63	1.75	.22	10
▲ HL13-2N-5	1 Str. - 2/0 Str.	100-125	1/2"	9/16"	1.00	3.00	4.25	.63	1.75	.22	5
▲ HL21-2N-5	2/0 Str. - 4/0 Str.	150-200	1/2"	9/16"	1.25	3.00	4.19	.63	1.75	.25	5
▲ HL30-2N-2	4/0 Str. - 300 MCM	250-300	1/2"	5/8"	1.25	3.00	4.25	.63	1.75	.31	2
▲ HL50-2N-2	300 MCM - 500 MCM	400-500	1/2"	3/4"	1.50	3.00	4.44	.63	1.75	.34	2
▲ HL75-2N-1	500 MCM - 750 MCM	500-750	1/2"	7/8"	1.63	3.00	4.69	.63	1.75	.38	1
▲ HL100-2N-1	750 MCM - 1000 MCM	800-1000	1/2"	7/8"	1.88	3.00	4.94	.63	1.75	.50	1



▲ NEMA hole sizes and spacing