

Continuously Variable - Level Set Types

Specifications

Frequency Range: 800MHz -12.4 GHz as noted

Attenuation Range: 0 - 40 dB as noted

Impedance: 50 Ohms

VSWR: 1.50 max

Insertion Loss: 0.5 dB max

Power: 5 Watts average, 3Kilowatts Peak

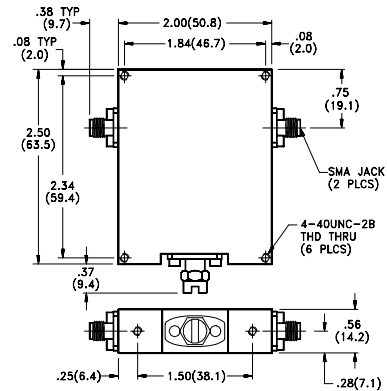
Operating Temperature Range: -65 to +125C

Resetability: 0.1 dB max

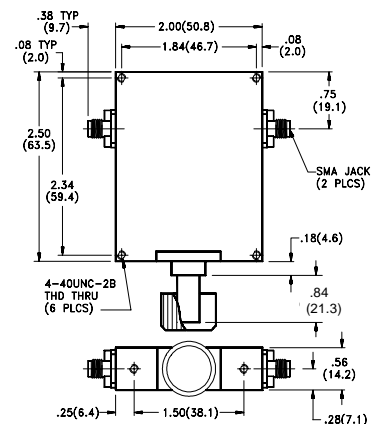
Finish: Connectors are Passivated Stainless Steel

Housings are Irridited Aluminum

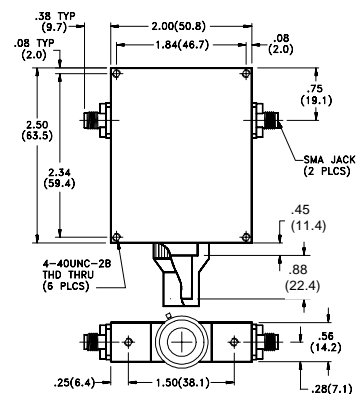
Midwest Microwave's series of Level Set Miniature Continuously Variable Attenuators were designed to meet the most stringent environmental conditions. The Level Set Types are useful for applications where a specific level of attenuation is required at one frequency and flatness over the frequency band is not necessary. The units are available in a Standard simple locking type configuration, a Panel mount type with a knob, or a Turns-counting dial type, also panel mounted, for reference setting or if calibration is desired. SMA connector configurations are standard, however Type N or TNC connector configurations are also available (see note below).



S = Standard Locking Nut Type



P = Panel Mounting Type



T = Turns Counting Panel Mounting Type

| Level Set Models | | |
|------------------|------------------|--------------------|
| Freq Range (GHz) | Atten Range (dB) | Model Number |
| 0.80 - 0.96 | 10 | CVA-LS90-10-SMA-05 |
| 1.0 - 2.0 | 15 | CVA-LS91-15-SMA-05 |
| 2.0 - 4.0 | 10 | CVA-LS92-10-SMA-05 |
| | 20 | CVA-LS92-20-SMA-05 |
| | 30 | CVA-LS92-30-SMA-05 |
| 4.0 - 8.0 | 10 | CVA-LS93-10-SMA-05 |
| | 20 | CVA-LS93-20-SMA-05 |
| | 30 | CVA-LS93-30-SMA-05 |
| | 40 | CVA-LS93-40-SMA-05 |
| 8.0 - 12.4 | 10 | CVA-LS94-10-SMA-05 |
| | 20 | CVA-LS94-20-SMA-05 |
| | 30 | CVA-LS94-30-SMA-05 |
| | 40 | CVA-LS94-40-SMA-05 |

Notes:

1. To designate a Panel type option, substitute "P" for "S" in the Model No..
2. To designate a Turns-Counting Dial option, substitute "T" for "S" in the Model No..
3. To designate Type N or TNC connectors, substitute "NNN" or "TNC" for "SMA" in the Model No.