

General Purpose US Fuses

American Power Fuses AMP-TRAP® A4BT (Class L TD)

when your heavier loads need
protection A4BT fuses
won't let you down

The high interrupting rating of A4BT current limiting fuses is ideally suited for protecting mains, feeders, and general circuits. The 10-second time delay at 500% of fuse rating is ideal for large motors and other loads with a high inrush. A4BT fuses are suitable for DC applications up to 500VDC. An A4BT fuse can be applied to normal loads up to its full ampere rating to allow 100% rating of equipment.



Features/Benefits

- Unique dimensions prevent replacement by other fuse classes.
- Blade-stamped catalog numbers for permanent identification
- Glass melamine body and plated terminal provide superior reliability in harsh environments

Ratings

AC: 200 to 2,000A
600VAC, 200kA I.R.

DC: 200 to 2,000A
500VDC, 100kA I.R.

Highlights

- Current-Limiting
- Full 10-Second Delay
- DC Ratings
- Uniform Characteristics in all Ampere Ratings

Applications

- Motors
- Motor Controllers
- Transformers
- Panelboards
- Mains
- Feeders

Approvals



- UL Listed to Standard 248-10 (601-2000A)
- CSA Certified to Standard C22.2 No. 248.10 (601-2000A)
- DC Tested to UL 198L limits (601-2000A)

General Purpose US Fuses



American Power Fuses AMP-TRAP® A4BT (Class L TD)



Standard Fuse Ampere Ratings, Catalog Numbers

Ampere Rating	Catalog Number	Ampere Rating	Catalog Number	Ampere Rating	Catalog Number
200	A4BT200	601	A4BT601	1100	A4BT1100
250	A4BT250	650	A4BT650	1200	A4BT1200
300	A4BT300	700	A4BT700	1400	A4BT1400
350	A4BT350	750	A4BT750	1500	A4BT1500
400	A4BT400	800	A4BT800	1600	A4BT1600
500	A4BT500	900	A4BT900	1800	A4BT1800
600	A4BT600	1000	A4BT1000	2000	A4BT2000

Three Phase Motor Fuse Selection 460 Volt Three Phase Motors

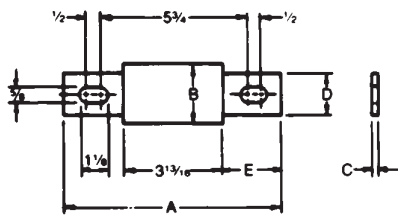
Motor	Full Load	Recommended A4BT Ampere Rating	
		Motor Acceleration Times	
		HPAmperes	Typical
Heavy Load	at 460V	5 seconds	Over 5 seconds
	300	360	601

Standard Fuse Ampere Ratings, Reference Numbers

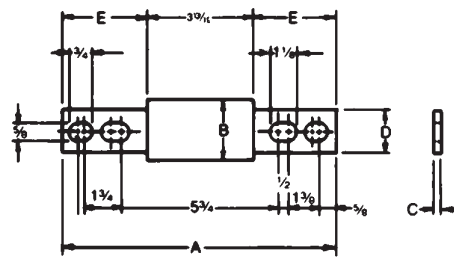
Ampere Rating	Ref. Number	Ampere Rating	Ref. Number	Ampere Rating	Ref. Number
200	W212723	601	Z218338	1100	J200890
250	E214249	650	L218855	1200	W201430
300	G214757	700	A219374	1400	G201946
350	L215773	750	X219900	1500	G211169
400	R216284	800	N222583	1600	Z211691
500	J217312	900	K200891	1800	F212203
600	N217822	1000	M222582	2000	F213238

575 Volt Three Phase Motors

400	382	601	700
500	472	700	1000



200-800A



801-2000A

Dimensions

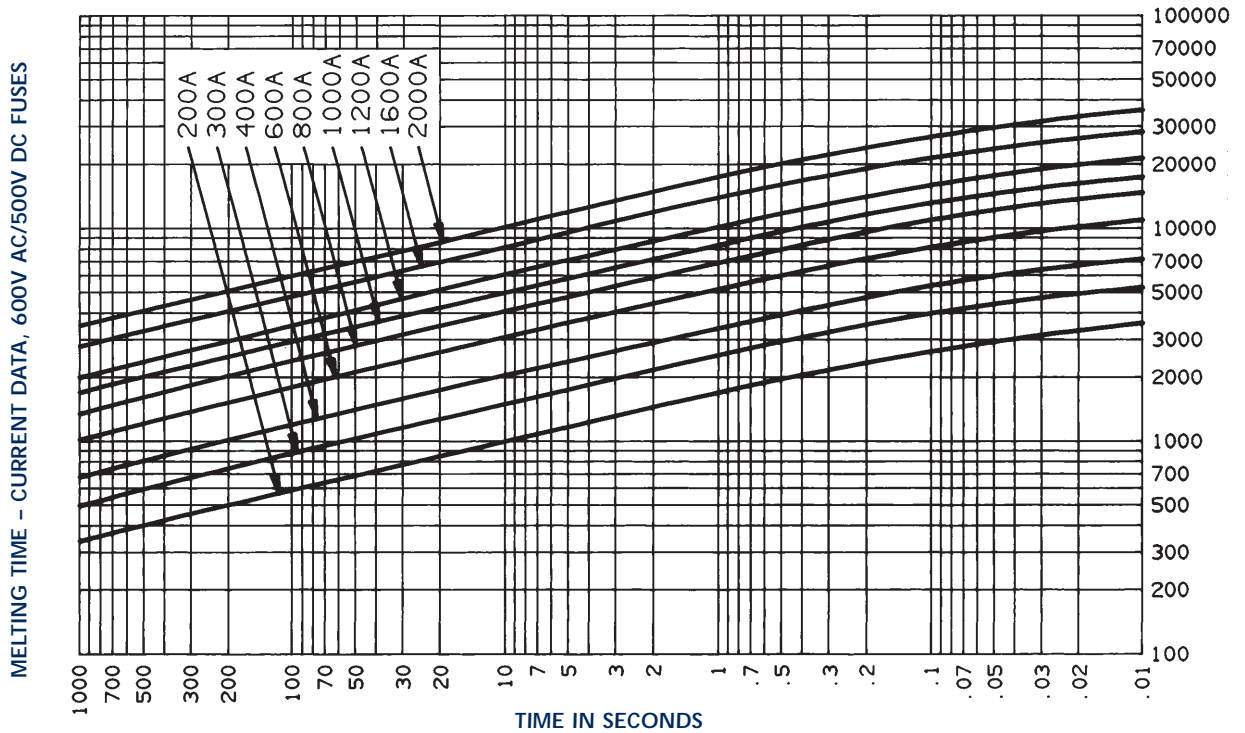
Ampere Rating	A		B		C		D		E	
	In.	mm	In.	mm	In.	mm	In.	mm	In.	mm
200-600	8-5/8	219	2	51	5/16	8	1-5/8	41	2-13/32	61
601-800	8-5/8	219	2-1/2	63	3/8	9	2	51	2-13/32	61
801-1200	10-3/4	273	2-1/2	63	3/8	9	2	51	3-15/32	88
1201-1600	10-3/4	273	3	76	7/16	11	2-3/8	60	3-15/32	88
1601-2000	10-3/4	273	3-1/2	89	1/2	13	2-3/4	70	3-15/32	88

Safety Note: Class L fuses are dimensioned for one-way interchangeability.
A Class L fuse of any lower ampere rating can be substituted for a given Class L fuse.

General Purpose US Fuses

American Power Fuses
AMP-TRAP®
A4BT (Class L TD)

A4BT 200 to 2000



Peak Let-Thru Current Data - A4BT 300 to 2000, 600 Volts AC

