

Wire to Board Connectors AMP Super Trap Connectors (1.25mm Centerline)

Features

- Connector for terminating 1.25mm pitch AWG #26 ribbon cable to the printed circuit board.
- Available in both vertical and horizontal mounting types.
- First radial tape-mounted connector as staggered posted product, applicable to high-speed automatic packaging system.
- Loose-piece connector features post with kink which serves to retain connector when mounted on the printed circuit board.
- Low profile, the low above the board height enables high density packaging.
- Extremely high density packaging of electronic components is possible by utilizing the connector's 1.25mm in-line pitch and low profile above the board height.



AMP Super Trap Connectors are cable-to-board connectors mounted on the printed circuit board to accept ribbon cable with conductors on 1.25mm centerline.

These connectors are available in two styles-vertical mounting and horizontal mounting. The vertical mounting connector is of ZIF construction that makes insertion and extraction of cable easy, while the horizontal mounting connector features a Non-ZIF design for positive retention of cable after it is inserted. A tape-mounted connector version is available, in both vertical and horizontal types. It is the first staggered posted connector that can be applied by radial automatic component packaging system. Thus, high-speed automatic packaging of tape-mounted connectors has now become

feasible.

The Super Trap connector includes two types, one featuring post with kink mechanism that secures the connector on board until it is soldered and the other having post without kink. The radial tape-mounted connector has post without kink. The connector's dimension above the board when mounted is 7.3mm wide by 7.0mm high for ZIF type vertical board mounting connector and 7.3mm wide by 4.5mm high for Non-ZIF type horizontal board mounting connector. This compact size is ideal for extremely high density packaging.

The vertical board mounting connector can be applied to cable with low insertion force in its normal state, or with zero insertion force by

depressing actuator. For extracting cable, it can be done readily by pulling it out while depressing actuator.

Performance Specifications

Rated voltage and current:

AC/DC 50V 1A

Withstanding voltage:

500V AC for one minute

Insulation resistance:

500M Ω min./DC 100V

Contact resistant:

10m Ω max. (initial)

Operating temperature:

-35°C ~ +105°C

(Temperature rise includes the rise caused by load current)

Contact retention:

500g min./position

Product specification:

108-5310(Vertical board mounting type)

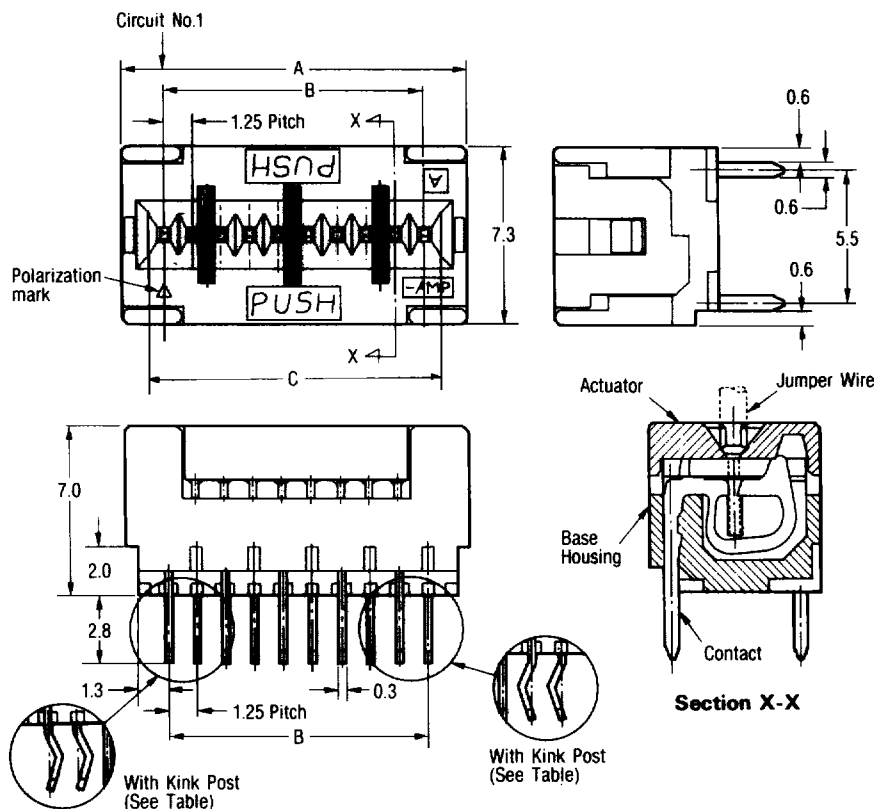
108-5326(Horizontal board mounting type)

Wire to Board Connectors AMP Super Trap Connectors Vertical Mounting Type

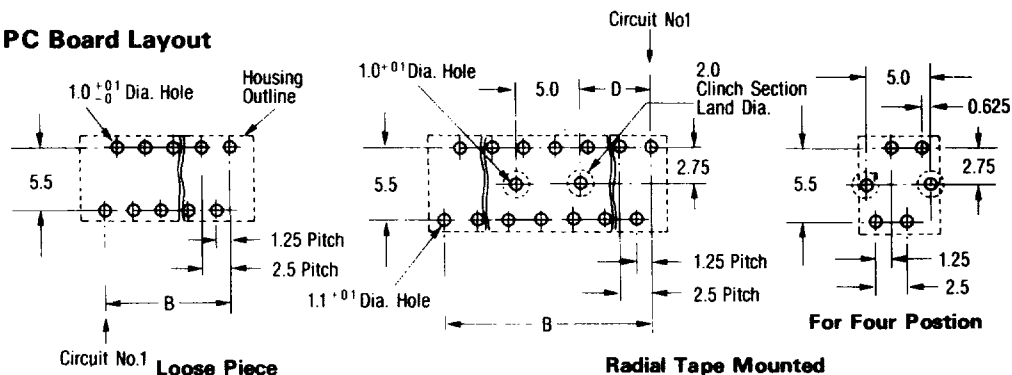
Material and finish

Housing, actuator—6/6 Nylon,
light blue

Contact—solder-plated
phosphor bronze



PC Board Layout



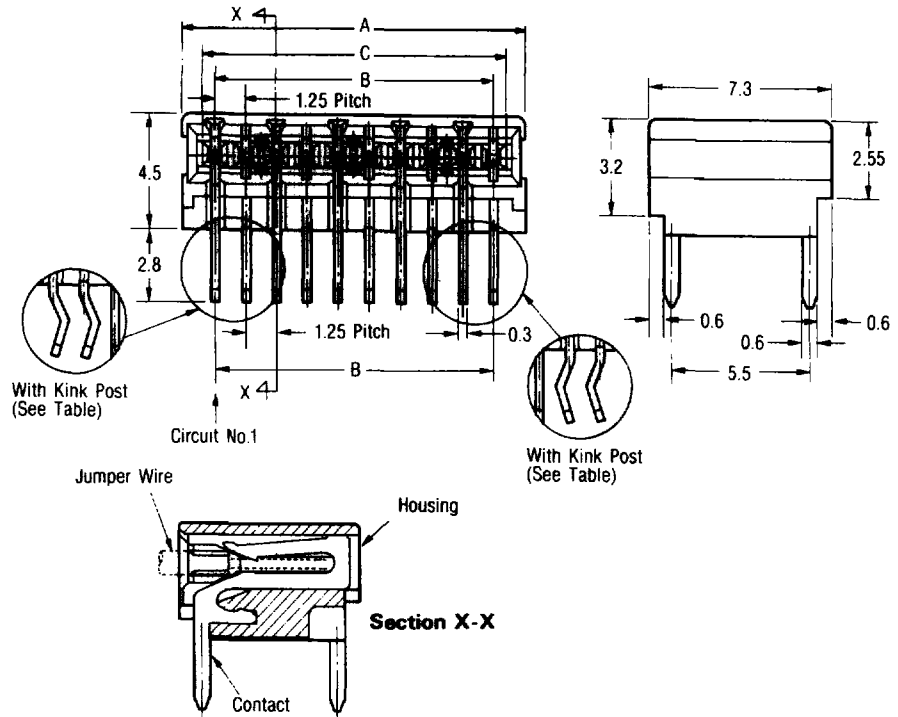
*Applicable cable width =
C dimension maximum

No. of Positions	Dimensions				Part Number of Connectors	
	A	B	C*	D	With Kink Post	Without Kink Post
					Loose Piece	Radial Tape Mounted(ea.)
4	7.35	3.75	5.20	—	5-176746-4	5-176433-4 (1,000)
5	8.60	5.00	6.45	0.625	5-176746-5	5-176433-5 (1,000)
6	9.85	6.25	7.70	0.625	5-176746-6	5-176433-6 (1,000)
7	11.10	7.50	8.95	1.875	5-176746-7	5-176433-7 (500)
8	12.35	8.75	10.20	1.875	5-176746-8	5-176433-8 (500)
9	13.60	10.00	11.45	3.125	5-176746-9	5-176433-9 (500)
10	14.85	11.25	12.70	3.125	6-176746-0	6-176433-0 (500)
11	16.10	12.50	13.95	4.375	6-176746-1	6-176433-1 (500)
12	17.35	13.75	15.20	4.375	6-176746-2	6-176433-2 (500)
13	18.60	15.00	16.45	5.625	6-176746-3	6-176433-3 (500)
14	19.85	16.25	17.70	5.625	6-176746-4	6-176433-4 (500)
15	21.10	17.50	18.95	6.875	6-176746-5	6-176433-5 (500)

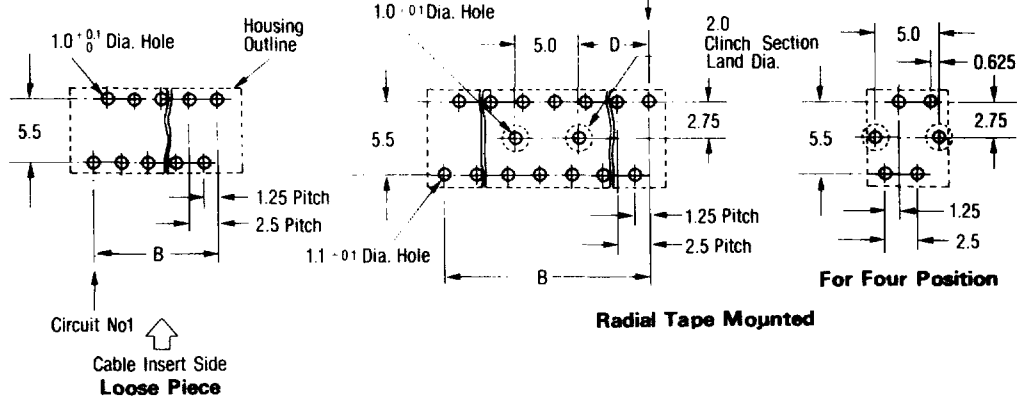
Wire to Board Connectors AMP Super Trap Connectors Horizontal Mounting Type

Material and finish

Housing, actuator — 6/6 Nylon,
light blue



PC Board Layout



* Applicable cable width =
C dimension maximum

No. of Positions	Dimensions				Part Number of Connectors	
	A	B	C*	D	With Kink Post	Without Kink Post
					Loose Piece	Radial Tape Mounted (ea.)
4	6.35	3.75	5.20	—	5-176927-4	5-176929-4 (1,000)
5	7.60	5.00	6.45	0.625	5-176927-5	5-176929-5 (1,000)
6	8.85	6.25	7.70	0.625	5-176927-6	5-176929-6 (1,000)
7	10.10	7.50	8.95	1.875	5-176927-7	5-176929-7 (500)
8	11.35	8.75	10.20	1.875	5-176927-8	5-176929-8 (500)
9	12.60	10.00	11.45	3.125	5-176927-9	5-176929-9 (500)
10	13.85	11.25	12.70	3.125	6-176927-0	6-176929-0 (500)
11	15.10	12.50	13.95	4.375	6-176927-1	6-176929-1 (500)
12	16.35	13.75	15.20	4.375	6-176927-2	6-176929-2 (500)
13	17.60	15.00	16.45	5.625	6-176927-3	6-176929-3 (500)
14	18.85	16.25	17.70	5.625	6-176927-4	6-176929-4 (500)
15	20.10	17.50	18.95	6.875	6-176927-5	6-176929-5 (500)