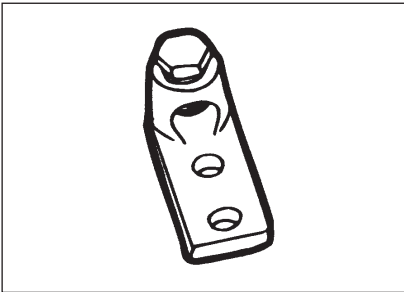


Copper Mechanical Connectors

- For copper conductors
- Screws are plated steel
- Compact design
- Add suffix P to cat. number for tin plating
- One-piece construction for strength and durability
- Excellent for confined quarters
- Cat. Nos. L400 and L650 are cast from high strength bronze alloy
- Cat. Nos. L35, L70, L125 and L250 are cold forged from pure electrolytic copper with 99% conductivity

MECHANICAL

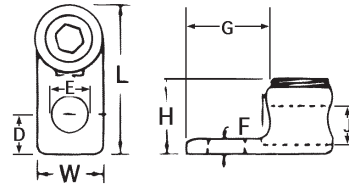


- Cast from high strength bronze alloy
- For use where large contact area is required to provide a more secure mounting

Type L – Single Conductor, One Hole Mount

Cat. No.		Conductor Range		Dimensions (in.)							
Socket	Hex	max.	min.	L	W	H	F	D	J	E	G
L35*	—	8 str.	14 sol.	1 ³ / ₁₆	3 ³ / ₈	3 ³ / ₈	3 ³ / ₃₂	1 ³ / ₆₄	1 ¹ / ₆₄	1 ³ / ₆₄	1 ¹ / ₂
L70*	—	4 str.	14 sol.	1 ¹ / ₈	1 ⁷ / ₃₂	3 ⁵ / ₆₄	3 ³ / ₃₂	9 ³ / ₃₂	9 ³ / ₃₂	9 ³ / ₃₂	2 ¹ / ₃₂
L125	L125H	1/0 str.	8 sol.	1 ¹ / ₂	4 ⁷ / ₆₄	3 ³ / ₄	3 ³ / ₃₂	3 ³ / ₈	2 ⁷ / ₆₄	2 ¹ / ₆₄	2 ⁷ / ₃₂
L250	L250H	250 kcmil	6 str.	1 ⁶¹ / ₆₄	1 ⁵ / ₁₆	1 ¹ / ₁₆	1 ¹ / ₈	2 ⁹ / ₆₄	5 ⁵ / ₈	1 ³ / ₃₂	1 ³ / ₃₂
L400BB	L400H	500 kcmil	4/0 str.	3	1 ¹³ / ₃₂	1 ¹⁵ / ₃₂	9 ³ / ₃₂	5 ⁵ / ₈	7 ⁷ / ₈	9 ³ / ₁₆	1 ⁵ / ₈
L650	L650H	1000 kcmil	500 kcmil	4	2	2 ³ / ₁₆	1 ⁷ / ₃₂	3 ³ / ₄	1 ¹ / ₄	9 ³ / ₁₆	2

* Sizes L35 and L70 have screwdriver slot head screws only.
U.L. 486A



Type L – Single Conductor, Two Hole Mount

Cat. No.		Conductor Range		Dimensions (in.)								
Socket	Hex	max.	min.	L	W	H	F	D	K	E	G	J
L1252	L1252H	1/0 str.	4 str.	2 ¹³ / ₁₆	2 ⁵ / ₃₂	1 ³ / ₁₆	3 ¹ / ₁₆	7 ¹ / ₁₆	1	1 ¹¹ / ₃₂	2	2 ²⁷ / ₆₄
L2502	L2502H	250 kcmil	1/0 str.	3	1 ¹ / ₁₆	1 ¹ / ₃₂	1 ⁵ / ₆₄	7 ¹ / ₁₆	1	1 ¹³ / ₃₂	1 ⁷ / ₈	5 ⁵ / ₈
L4002	L4002H	500 kcmil	4/0 str.	3 ³ / ₈	1 ¹³ / ₃₂	1 ¹⁵ / ₃₂	5 ⁵ / ₁₆	7 ¹ / ₁₆	1	1 ¹³ / ₃₂	1 ¹⁵ / ₁₆	5 ⁵ / ₆₄
L6502	L6502H	1000 kcmil	500 kcmil	4 ¹⁵ / ₁₆	2	2	3 ³ / ₈	9 ³ / ₁₆	1 ¹ / ₂	9 ³ / ₁₆	2 ³ / ₄	1 ¹ / ₄

U.L. 486A

