

B20 COMBO CONNECTOR

TIN PLATED

MATERIAL

INSULATOR - PBT (UL 94V-0)
CONTACT - COPPER ALLOY

SPECIFICATIONS

CURRENT RATING

1 AMP DC

CONTACT RESISTANCE

30 MILLIOHM MAX.

INSULATION RESISTANCE

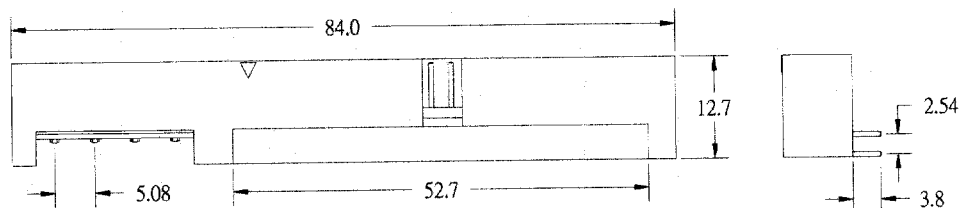
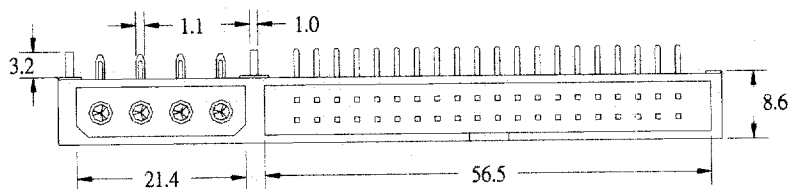
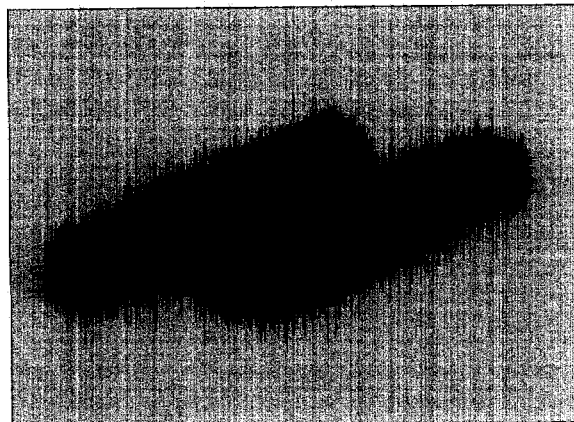
1000 MEGOHM MIN.

DIELECTRIC VOLTAGE

500V AC FOR ONE MINUTE

OPERATING TEMPERATURE

-40°C TO 105°C



| 1.NO. OF CONTACT | 2.CONTACT MATERIAL | 3.CONTACT PLATING | 4.INSULATOR COLOR |
|------------------|--------------------|---|-------------------|
| A: 2 IN 1 | A: BRASS | T: TIN PLATED S: SELECTIVE G: GOLD FLASH A: 5u" INCH GOLD B: 10u" INCH GOLD C: 15u" INCH GOLD D: 30u" INCH GOLD | 1. BLACK |

