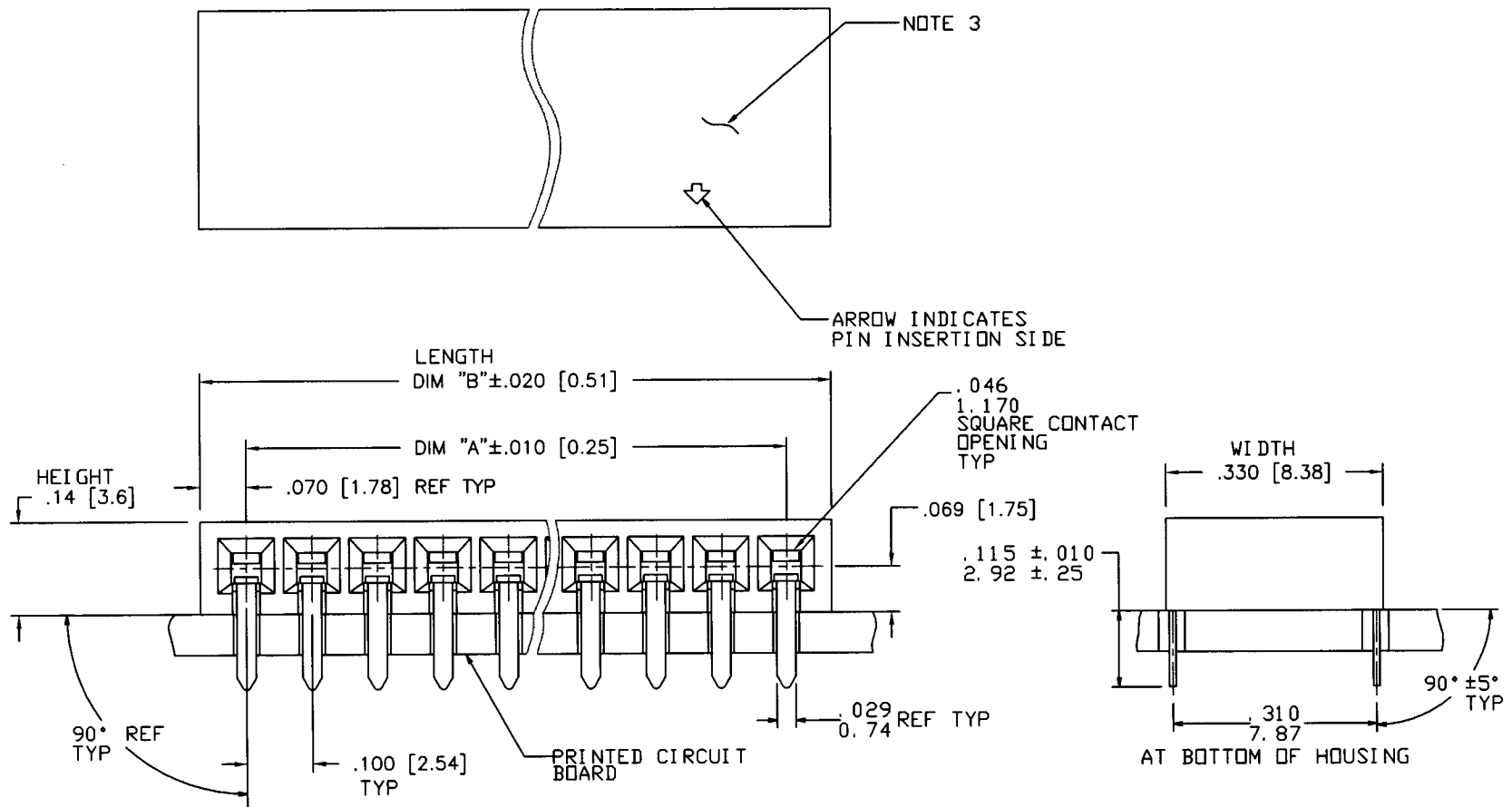


Tous droits strictement reserves. Reproduction ou communication a des tiers interdite sous quelque forme que ce soit sans autorisation ecrite du proprietaire. Propriete de ©BERG ELECTRONICS. Droits de reproduction BERG ELECTRONICS INC.

BERG
ELECTRONICS

All rights strictly reserved. Reproduction or issue to third parties in any form whatever is not permitted without written authority from the proprietor. Property of ©BERG ELECTRONICS Copyright BERG ELECTRONICS INC.

PRODUCT NUMBER
SEE TABLE



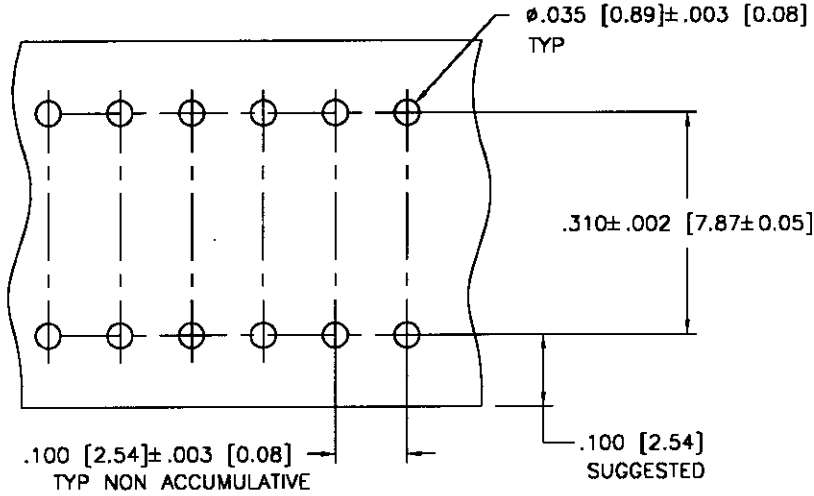
mat'l. code NOTE 1 & 2				tolerances unless otherwise specified				CUSTOMER COPY		BERG ELECTRONICS	
ltr	ecn no	dr	date	linear	.XX ±.01/.3		projection		title		
A	APPROVED	DAN	10/81		.XXX ±.005/.13		⊕ ↗		1 X .100/2.54 CARD CONNECTOR		
B	REDRAWN	HAA	3/83		.XXXX ±.0020/.051		INCH/MM		product family CARD CONN. code		
C	REVISED	MSC	10/83	angles	0° ±2'		scale		size dwg no		
D	REVISED	WJC	4/22/85	dr	B. ASHRAFI	10/8/81	4:1		A 66944		
E	REVISED	EBY	2/4/86	engr	D. NEIDICH	10/8/81			sheet		
F	V61635	MDF	11/22/96	chr	D. NEIDICH	10/12/81			1 of 4		
G	V70995	JM	10/19/97	appd	D. DEIDICH	10/12/81					
sheet	revision	G	F	F	F						
index	sheet	1	2	3	4						

Tous droits strictement reserves. Reproduction ou communication a des tiers interdite sous quelque forme que ce soit sans autorisation écrite du propriétaire.
 Propriete de ©BERG ELECTRONICS. Droits de reproduction BERG ELECTRONICS INC.

All rights strictly reserved. Reproduction or issue to third parties in any form whatever is not permitted without written authority from the proprietor.
 Property of ©BERG ELECTRONICS Copyright BERG ELECTRONICS INC.



PRODUCT NUMBER
 SEE TABLE



RECOMMENDED MOUNTING
 HOLE PATTERN
 SCALE 4/1

FIGURE # 1

NOTES:

- ① HOUSING MATERIAL:
 FILLED PHENOLIC
 COLOR:
 BLACK
- ② TERMINAL MATERIAL:
 BODY: BRASS, .010/.25 THICK.
 SPRING: BE - CU, HEAT TREATED.
 BODY PLATING: 15u"/0.38u Au OVER .50u"/1.27u Ni IN CONTACT AREA.
 SPRING PLATING: Au FLASH.
3. MARKING: "BERG", BERG PART NUMBER AND DATE CODE.
 PARTS 1X8 OR LESS HAVE THIS INFORMATION ON TUBE LABEL
 INSTEAD OF HOUSING. MARK ARROW.
4. APPLICATION INFORMATION:
 A. RECOMMENDED MOUNTING HOLE PATTERN IS SHOWN IN FIGURE # "1".
 B. ALL MATING PINS TO BE .025/0.64 SQUARE ON TRUE
 CENTER OF GIVEN TERMINAL. SPACING WITHIN .015/0.38 DIA.
 C. SUGGESTED MATING PIN LENGTH .350±.020/8.89±0.51.

mat'l. code				tolerances unless otherwise specified		CUSTOMER COPY		BERG ELECTRONICS	
ltr	ecn no	dr	date	linear	.XX ± .01/.3	projection	title		
F					.XXX ± .005/.13		1 X .100/2.54		
				angles	.XXXX ± .0020/.051		CARD CONNECTOR		
				dr	B. ASHRAFI 10/8/81	INCH/MM	product family	CARD CONN	code
				engr	D. NEIDICH 10/8/81	scale	size	dwg no	—
				chr	D. NEIDICH 10/12/81	1:1	A	66944	sheet
				appd	D. NEIDICH 10/12/81				2 of
sheet index	revision sheet								

Tous droits strictement reserves. Reproduction ou communication a des tiers interdite sous quelque forme que ce soit sans autorisation écrite du propriétaire.
 Propriete de ©BERG ELECTRONICS. Droits de reproduction BERG ELECTRONICS INC.

All rights strictly reserved. Reproduction or issue to third parties in any form whatever is not permitted without written authority from the proprietor.
 Property of ©BERG ELECTRONICS Copyright BERG ELECTRONICS INC.



PRODUCT NO.	NO OF PDS	DIM "A"	DIM "B"	
66944-001	1X1	.000/0.00	.140/3.56	OBSOLETE
-002	1X2	.100/2.54	.240/6.10	
-003	1X3	.200/5.08	.340/8.64	
-004	1X4	.300/7.62	.440/11.18	
-005	1X5	.400/10.16	.540/13.72	
-006	1X6	.500/12.70	.640/16.26	
-007	1X7	.600/15.24	.740/18.80	
-008	1X8	.700/17.78	.840/21.34	
-009	1X9	.800/20.32	.940/23.88	
-010	1X10	.900/22.86	1.040/26.42	
-011	1X11	1.000/25.40	1.140/28.96	
-012	1X12	1.100/27.94	1.240/31.50	
-013	1X13	1.200/30.48	1.340/34.04	
-014	1X14	1.300/33.02	1.440/36.58	
-015	1X15	1.400/35.56	1.540/39.12	
-016	1X16	1.500/38.10	1.640/41.66	
-017	1X17	1.600/40.64	1.740/44.20	
-018	1X18	1.700/43.18	1.840/46.74	
-019	1X19	1.800/45.72	1.940/49.28	
-020	1X20	1.900/48.26	2.040/51.82	
-021	1X21	2.000/50.80	2.140/54.36	
-022	1X22	2.100/53.34	2.240/56.90	
-023	1X23	2.200/55.88	2.340/59.44	
-024	1X24	2.300/58.42	2.440/61.98	
-025	1X25	2.400/60.96	2.540/64.52	
-026	1X26	2.500/63.50	2.640/67.06	
-027	1X27	2.600/66.04	2.740/69.60	
-028	1X28	2.700/68.58	2.840/72.14	
-029	1X29	2.800/71.12	2.940/74.68	
-030	1X30	2.900/73.66	3.040/77.22	
-031	1X31	3.000/76.20	3.140/79.76	
-032	1X32	3.100/78.74	3.240/82.30	
-033	1X33	3.200/81.28	3.340/84.84	
-034	1X34	3.300/83.82	3.440/87.38	
-035	1X35	3.400/86.36	3.540/89.92	
-036	1X36	3.500/88.90	3.640/92.46	
-037	1X37	3.600/91.44	3.740/95.00	
-038	1X38	3.700/93.98	3.840/97.54	
-039	1X39	3.800/96.52	3.940/100.08	
66944-040	1X40	3.900/99.06	4.040/102.62	

mat'l. code		tolerances unless otherwise specified		CUSTOMER COPY		BERG ELECTRONICS	
ltr	ecn no	dr	date	linear	.XX ±.01/.3	projection	title 1 X .100/2.54 CARD CONNECTOR
F					.XXX ±.005/.13		
				angles	.XXX ±.0020/.051	INCH/MM	product family CARD CONN. code
					σ ± 2'		
		dr		enr	B. ASHRAFI 10/8/81	scale	size dwg no
				chr	D. NEIDICH 10/8/81		
				appd	D. NEIDICH 10/12/81	1:1	A 66944
sheet index	revision sheet						sheet 3 of

All rights strictly reserved. Reproduction or issue to third parties in any form
 whatever is not permitted without written authority from the proprietor.
 Property of ©BERG ELECTRONICS Copyright BERG ELECTRONICS INC.

Tous droits strictement réservés. Reproduction ou communication à des tiers interdite
 sous quelque forme que ce soit sans autorisation écrite du propriétaire.
 Propriété de ©BERG ELECTRONICS. Droits de reproduction BERG ELECTRONICS INC.



PRODUCT NO.	NO OF POS	DIM 'A'	DIM 'B'
66944-041	1X41	4.000/101.60	4.140/105.16
-042	1X42	4.100/104.14	4.240/107.70
-043	1X43	4.200/106.68	4.340/110.24
-044	1X44	4.300/109.22	4.440/112.78
-045	1X45	4.400/111.76	4.540/115.32
-046	1X46	4.500/114.30	4.640/117.86
-047	1X47	4.600/116.84	4.740/120.40
-048	1X48	4.700/119.38	4.840/122.94
-049	1X49	4.800/121.92	4.940/125.48
-050	1X50	4.900/124.46	5.040/128.02
-051	1X51	5.000/127.00	5.140/130.56
66944-052	1X52	5.100/129.54	5.240/133.10

mat'l. code				tolerances unless otherwise specified		CUSTOMER COPY	BERG ELECTRONICS
ltr	ecn no	dr	date	linear	.XX ± .01/.3		
F					.XXX ± .005/.13	projection 	title 1 X .100/2.54 CARD CONNECTOR
				angles	.XXXX ± .0020/.051		
					0° ± 2'	INCH/MM	product family CARD CONN. size dwg no
				dr	B. ASHRAFI 10/8/81		
				engr	D. NEIDICH 10/8/81	scale 1:1	A 66944
				chr	D. NEIDICH 10/12/81		
				appd	D. NEIDICH 10/12/81		
sheet index	revision sheet						code 4 of