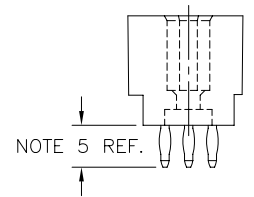
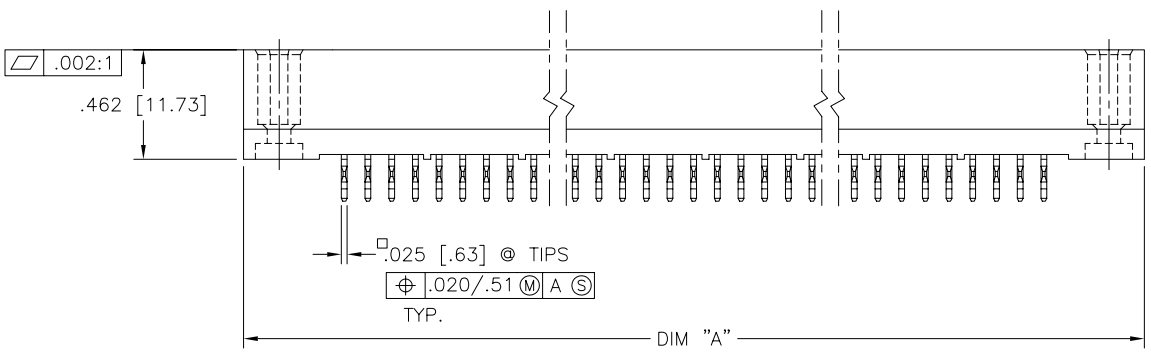
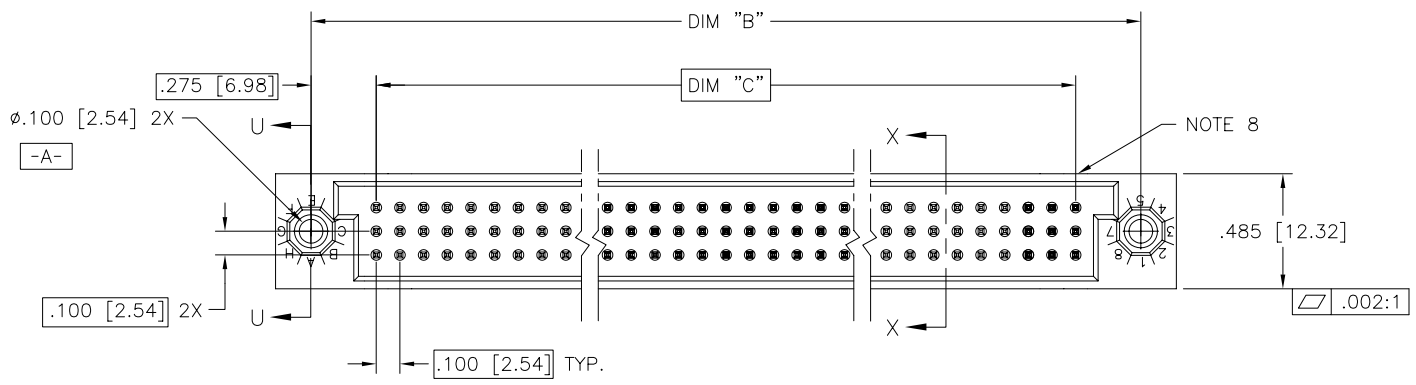


PRODUCT NUMBER
SEE NOTE 1

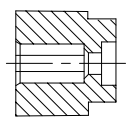


mat'l. code NOTE 3		surface ISO 1302 ✓	tolerance ISO 406 ISO 1101	projection INCH/MM	product family HPC
ltr	ecn no	dr	date	tolerances unless otherwise specified	title
A	V40730	PDP	4/11/94	angles	3 ROW VERTICAL HEADER MULTI-PLATED P.F. PINS, 0 G.P.
B	V40940	PDP	6/1/94	linear	
C	V50207	LSS	2/17/95	0°±2'	scale 1:1
D	V00276	JWS	2/2/00	dr	FCI
E	M06-0255	MHT	7/06/06	enr	J.AFTON 4/11/94
				chr	G.PETERS 4/15/94
				appd	S.CLARK 4/18/94
sheet index	revision sheet	E	E		dwg no 50765
		1	2		sheet 1 of 2 size A3
					type Product Customer Drawing

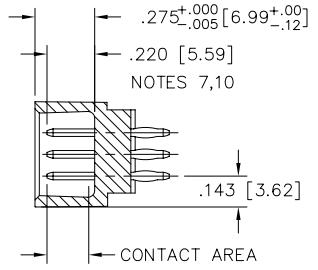
PRODUCT NUMBER	DIM.	LENGTH FORMULAS
SEE NOTE 1	DIM "A"	.100/2.54 x NO. OF COLUMNS +.750/19.05
	DIM "B"	.100/2.54 x NO. OF COLUMNS +.450/11.43
	DIM "C"	.100/2.54 x NO. OF COLUMNS -.100/2.54

NOTES:

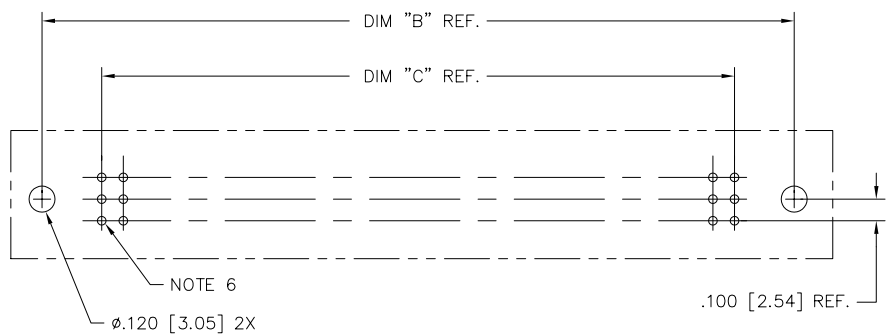
- ① PRODUCT NUMBERING CODE:
 $50765 - X YYY Z$
 - TAIL LENGTH(NOTE 5)
 - NO. OF POSITIONS(NOTE 2)
 - PLATING(NOTE 4)
 - BASE NUMBER
- ② THIS PRODUCT IS CONFIGURED IN SIZES OF 6 thru 80 COLUMNS IN INCREMENTS OF ONE.
i.e.: 6,7,8,9,.....79,80.
- ③ HOUSING MATERIAL: GLASS AND MINERAL FILLED HIGH TEMP. THERMOPLASTIC. FLAME RETARDANT PER UL94V-0. COLOR: BLACK.
PIN MATERIAL: PHOS BRONZE
- ④ PLATING OPTIONS:
 - A = 50u" Ni UNDER ALL WITH 30u" Au ON CONTACT AREA, SnPb ON PCB INTERFACE AND Au FLASH ON ALL OTHER AREAS.
 - B = 50u" Ni UNDER ALL WITH 30u" GXT ON CONTACT AREA, SnPb ON PCB INTERFACE AND Au FLASH ON ALL OTHER AREAS.
 - C = 50u" Ni UNDER ALL WITH 30u" Au ON CONTACT AREA, SnPb ON PCB INTERFACE, 30u" Au ON TAIL SIDE CONTACT AREA AND Au FLASH ON ALL OTHER AREAS.
 - D = 50u" Ni UNDER ALL WITH 30u" GXT ON CONTACT AREA, SnPb ON PCB INTERFACE, 30u" GXT ON TAIL SIDE CONTACT AREA AND Au FLASH ON ALL OTHER AREAS.
- ⑤ TAIL LENGTH OPTIONS:
FOR PLATING OPTIONS "A" & "B" ONLY:
A = .177/4.5
G = .250/6.35
FOR PLATING OPTIONS "C" & "D" ONLY:
C = .533/13.54
D = .733/18.62
- ⑥ $\phi .0453/1.151$ DRILLED HOLE PLATED WITH $.0003/.007$ MIN. SnPb OVER $.001/.03$ to $.003/.08$ Cu. PLATING TO ACHIEVE A $\phi .040 \pm .003/1.02 \pm .08$ HOLE.
- ⑦ TO ASSURE PROPER INSTALLATION: TOOLING, AS SPECIFIED IN INSTRUCTION MANUAL 155915-001 MUST BE USED. PIN MATING LENGTH WILL BE $\pm .002/.05$ AFTER INSTALLATION.
- ⑧ MANUFACTURE'S NAME, PART NUMBER AND LOT CODE TO APPEAR ON THIS SURFACE PER BUS-12-108.
9. FOR DOCUMENTATION MENU, SEE BUS-01-057.
- ⑩ REFERENCE 50807 FOR F.M.L.B. AVAILABLE OPTIONS AND WORKSHEET.



SECTION U-U



SECTION X-X



RECOMMENDED PCB LAYOUT
(ALL HOLES LOCATED ON $.100/2.54$ GRID UNLESS OTHERWISE SPECIFIED)

mat'l. code		surface	tolerance	projection	product family
		ISO 1302 <input checked="" type="checkbox"/>	ISO 406 ISO 1101		HPC
ltr	ecn	no	dr	date	tolerances unless otherwise specified
E					angles linear .xx±.01/.3
					linear .xxx±.005/.13
					0°±2' .xxxx±.0020/.051
		dr	P.PARSONS	4/12/94	INCH/MM
		enr	J.AFTON	4/11/94	scale 1:1
		chr	G.PETERS	4/15/94	
		appd	S.CLARK	4/18/94	
sheet	revision				
index	sheet				
		title		3 ROW VERTICAL HEADER	
		MULTI-PLATED P.F. PINS, 0 G.P.		sheet 2 of 2 size	
		dwg no		50765 A3	
		type		Product Customer Drawing	



FCIconnect.com

Copyright FCI