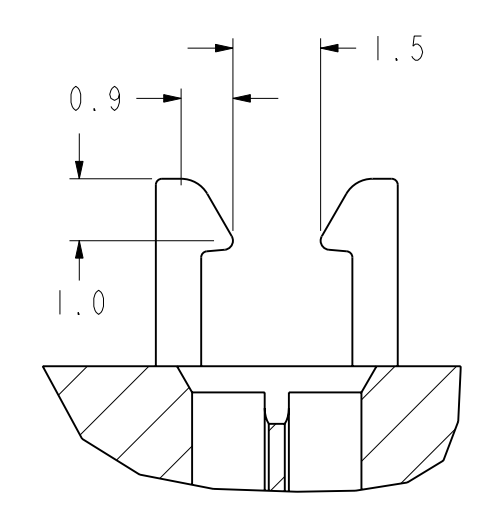
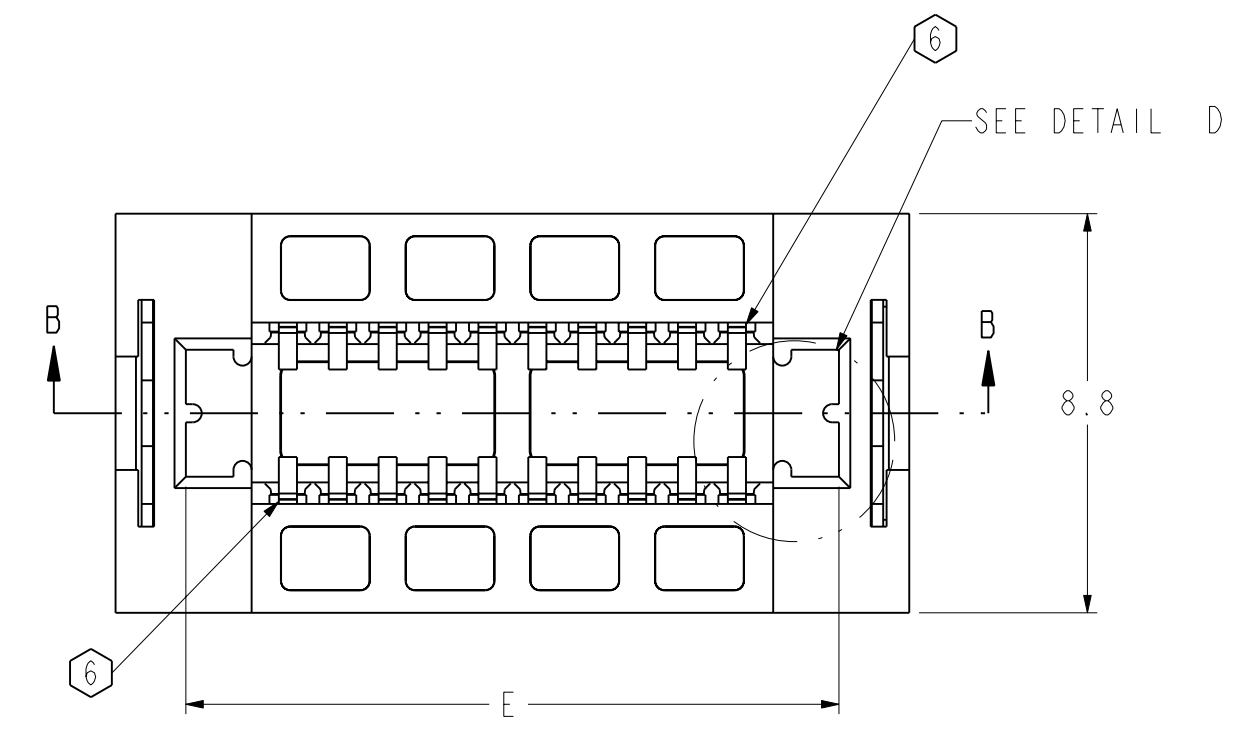


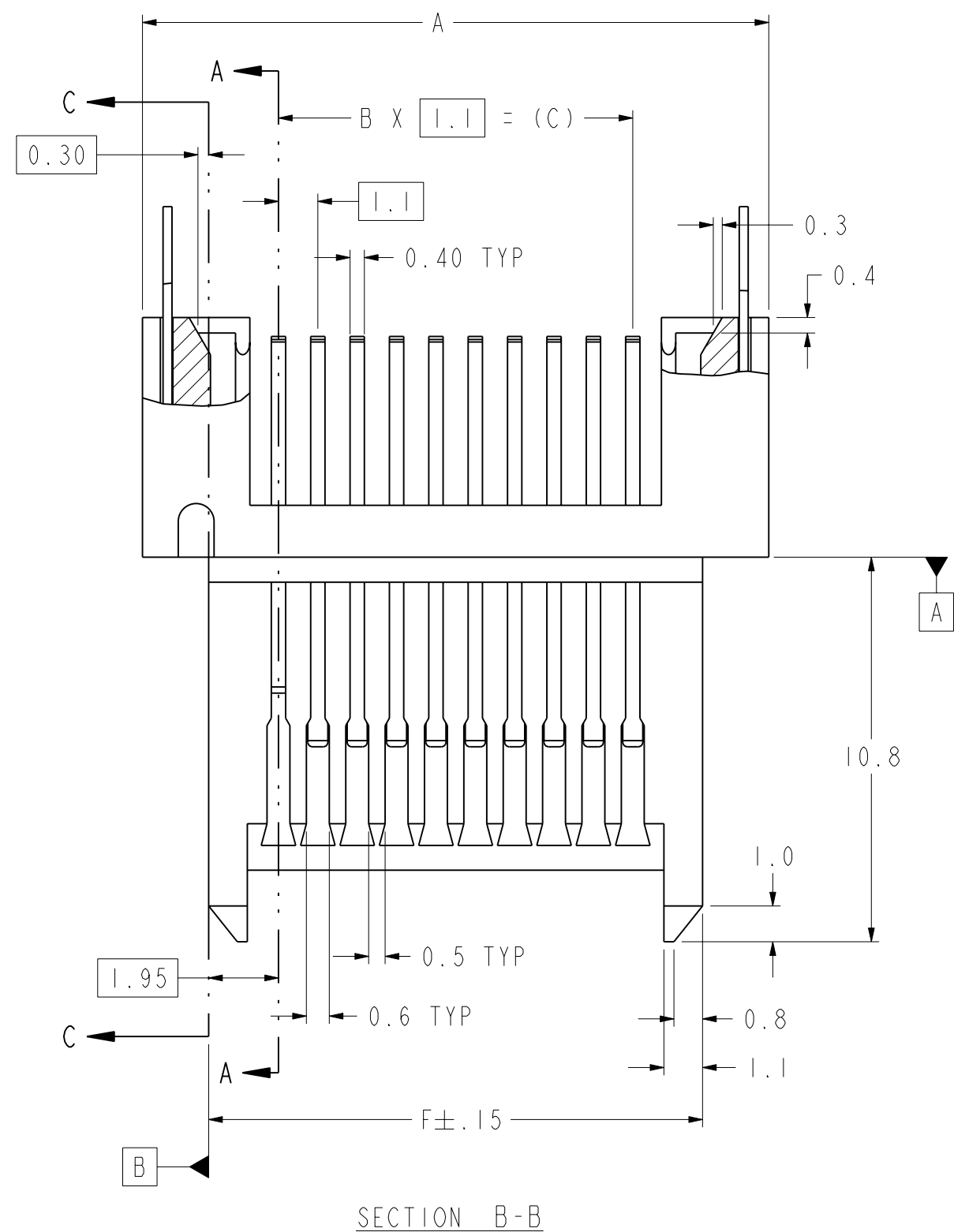
ZONE	REV	SCR NUMBER	DESCRIPTION	BY	DATE	APPROVED
ALL	01		NEW RELEASE	M. DEROSA	05-26-2004	D. MILBRAND
ALL	02		CHGD PN, CORRECT TABLE	D. MILBRAND	07-21-04	D. MILBRAND
A-8	03		ADD PLATING SPEC.	D. MILBRAND	08-11-04	D. MILBRAND
A2, A8	04		ADD MATL&PN SPEC.	D. MILBRAND	08-13-04	D. MILBRAND
D7	05		CORRECT TBL COL B AND C	D. MILBRAND	08-30-04	D. MILBRAND
ALL	06		ADDED SECTIONS AND DIMS ADDED ENGAGEMENT VIEW	M. DEROSA	10-09-2004	D. MILBRAND
ALL	07		ADDED C- TO DRAWING NO.	K. JEZAK	11-19-04	D. MILBRAND
C7, C8	08		UPDATE ASSY P/N ASSIGNMENT	K. JEZAK	11-23-04	D. MILBRAND
ALL	09		UPDATE ASSY P/N ASSIGNMENT MODIFIED NOTES 1 & 2 ADDED DIMS TO MATED PROFILE CHGD XSEC & DETAIL NAMES ON SHT 2	M. DEROSA	01-27-2005	N. PASCARELLA
D7	10		CORRECT COLUMN D FOR 80 POS., UPDATE FORMAT	M. CHARB.	01-24-2006	D. MILBRAND
SH2, C7	11		ADD DIM TO LAYOUT PATTERN	M. CHARB.	02-06-2006	D. MILBRAND
MULT.	12		UPDATE PN, ADD TO TABLE	D. MILBRAND	2-17-2006	D. MILBRAND

TABLE I

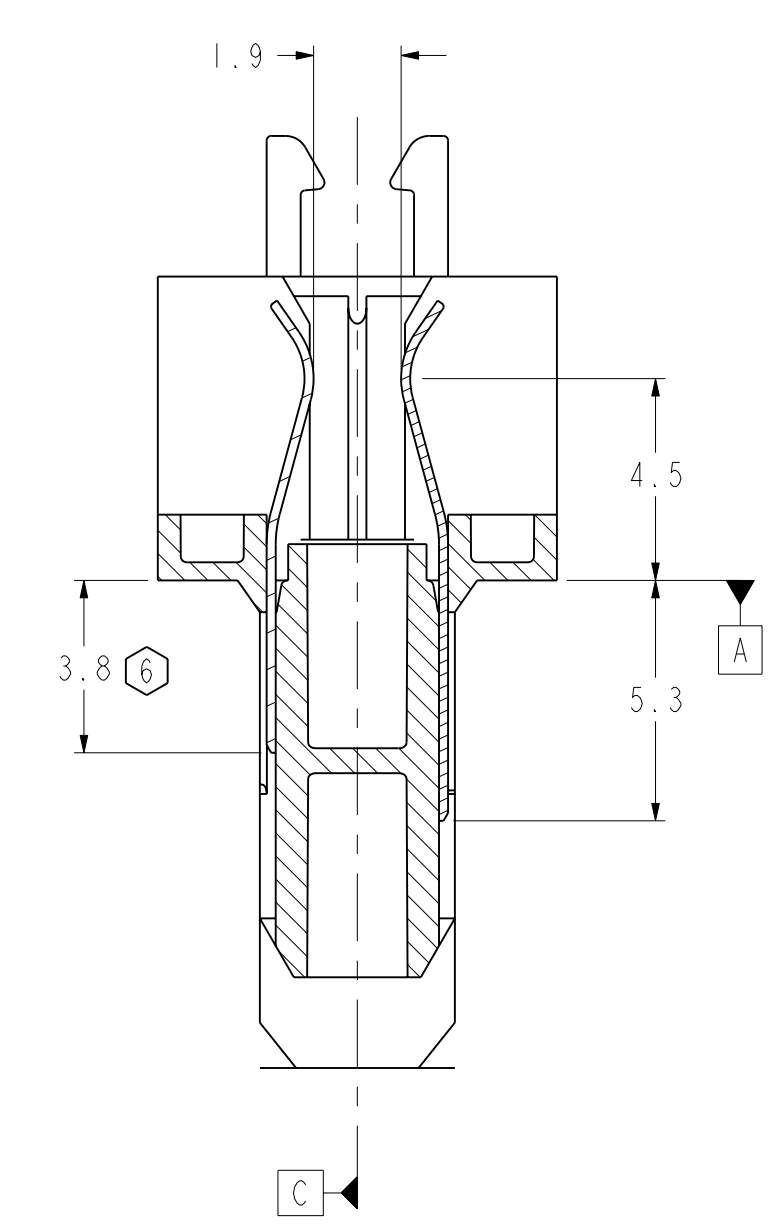
PART NUMBER	DESCRIPTION	A	B	C	D	E	F	J
318-5211-020	20 POSITION	17.5	9	9.9	14.0	14.4	13.8	2.8
318-5211-040	40 POSITION	28.5	19	20.9	25.0	25.4	24.8	2.8
318-5211-060	60 POSITION	39.5	29	31.9	36.0	36.4	35.8	2.8
318-5211-080	80 POSITION	50.5	39	42.9	47.0	47.4	46.8	2.8
318-5211-100	100 POSITION	61.5	49	53.9	58.0	58.4	57.8	2.8
318-5211-120	120 POSITION	72.5	59	64.9	69.0	69.4	68.8	2.8
318-5212-100	100 POSITION	61.5	49	53.9	58.0	58.4	57.8	3.2



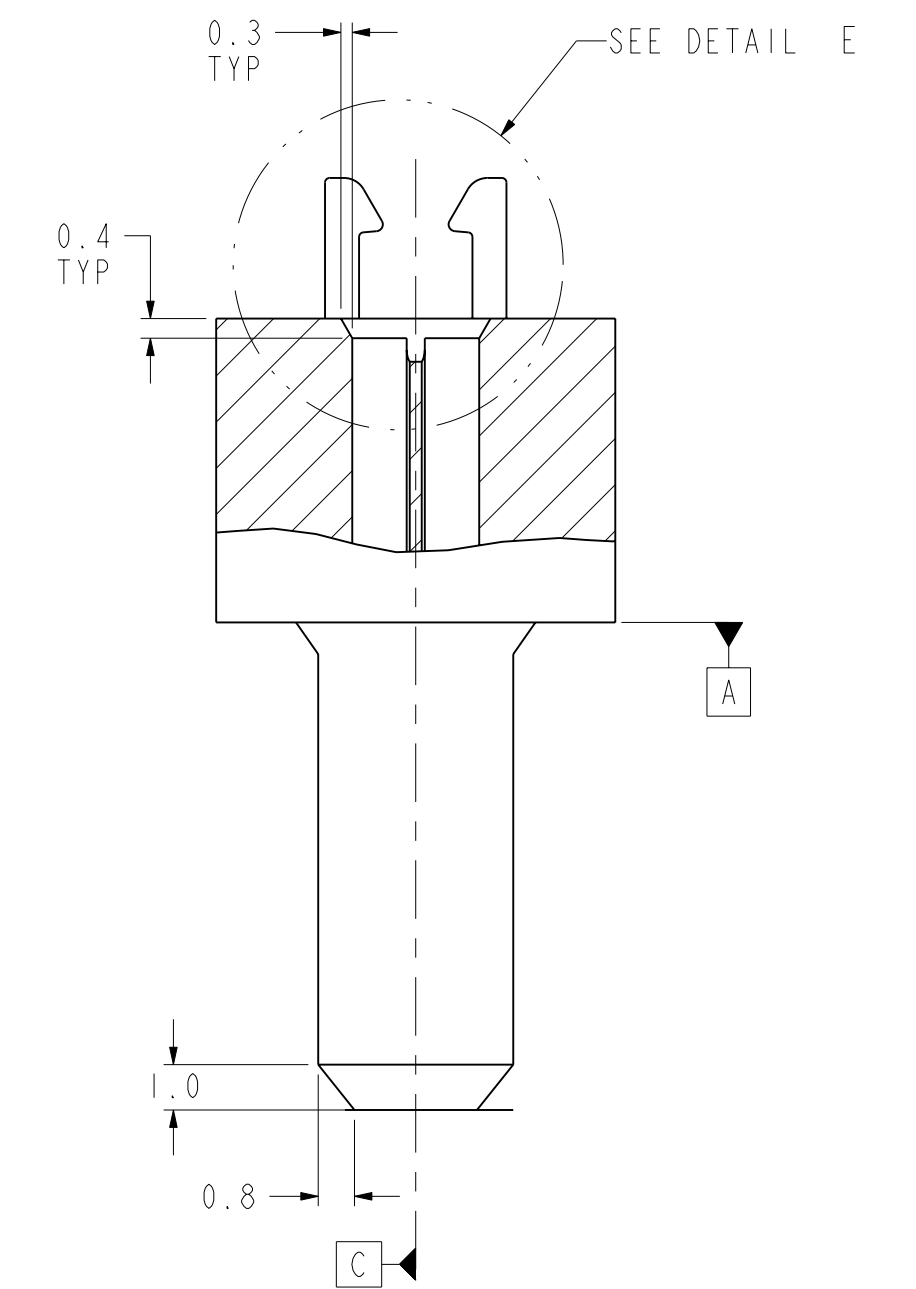
DETAIL E
SCALE 8/1



SECTION B-B



SECTION A-A
SIGNAL TERMINAL



SECTION C-C
CARD END GUIDE

ASSEMBLY PART NUMBER ASSIGNMENT
318 - X 2 X X - XXX

DAUGHTER CARD STRADDLE MOUNT

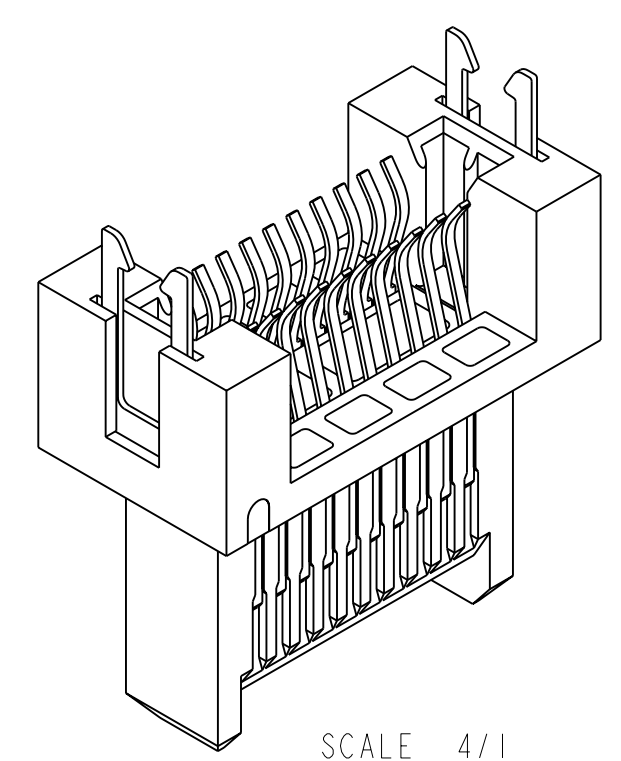
STYLE
5 - STANDARD
7 - CUSTOM

PCB THICKNESS
1 - 2.1mm - 2.4mm (.092" - .095")
2 - 2.5mm - 2.8mm (.100" - .110")

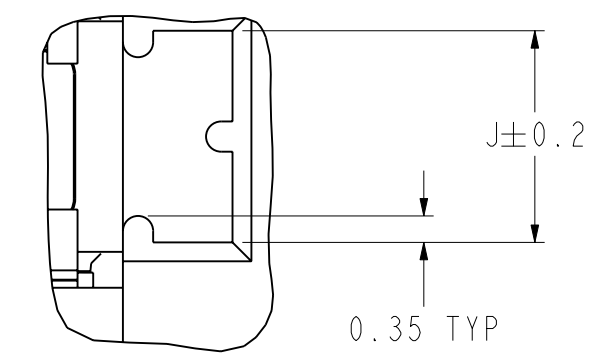
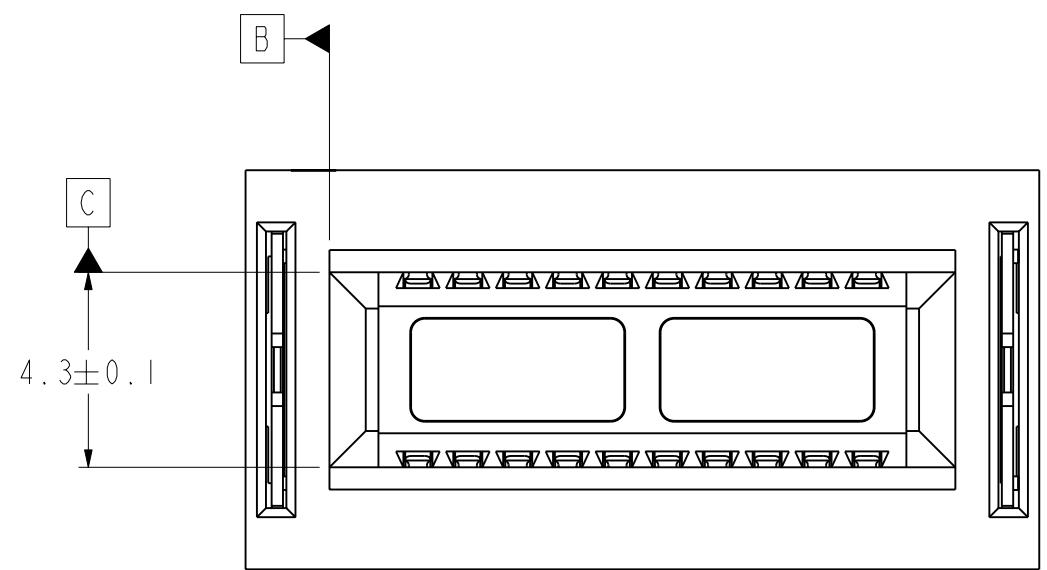
CONTACT PLATING
0 - 769 .00076mm GOLD PLATING
1 - 768 .0013mm GOLD PLATING

NUMBER OF POSITIONS

- NOTES:
- MATERIALS:
HOUSING - GLASS FILLED LCP, UL94 - V0
CONTACT:
BASE METAL - CU ALLOY
PLATING THICKNESS OF SIGNAL CONTACT:
UNDERPLATE - 50 - 150 MICROINCH NICKEL
MATING SURFACE - SEE TABLE I AND ASSY. PART NUMBER ASSIGNMENT
COMPLIANT - MATTE TIN
 - BOARD THICKNESS - SEE ASSY. PART NUMBER ASSIGNMENT
 - NOMINAL FOR FULLY MATED CONDITION.
 - MINIMUM WIPE IS FOR WORST CASE TOLERANCE STACKUP FULLY MATED CONDITION.
 - MINIMUM ENGAGEMENT FOR .5mm WIPE. THIS MODULE ONLY, FOR MULTIPLE MODULE ASSEMBLIES SEE RESPECTIVE MODULE DRAWINGS.
 - TRIGGER PIN LOCATIONS A1 AND B('B'+1).
 - NOMINAL THICKNESS. ±10% TOLERANCE ALLOWED.



SCALE 4/1



DETAIL D
SCALE 10/1

INTERPRET PER ASME Y14.5M
CODE IDENT 31413

TOLERANCES	DESIGN	DATE	BY	APPROVED
0.0	±0.25	01-28-2004	D. MILBRAND	
0.00	±0.13	05-26-2004	M. DEROSA	
0.000	±	05-26-2004	D. MILBRAND	
ANGLES	±	05-26-2004	D. MILBRAND	

UNLESS OTHERWISE SPECIFIED DIMENSIONS ARE IN MM, DECIMAL MAKER IS PERIOD

Amphenol TCS
A Division of Amphenol Corporation
44 Simon Street, Nashua, NH, 03060 603.879.3000

TITLE: APTERA DC LS MODULE STRADDLE MOUNT

PART NO. SEE TABLE I

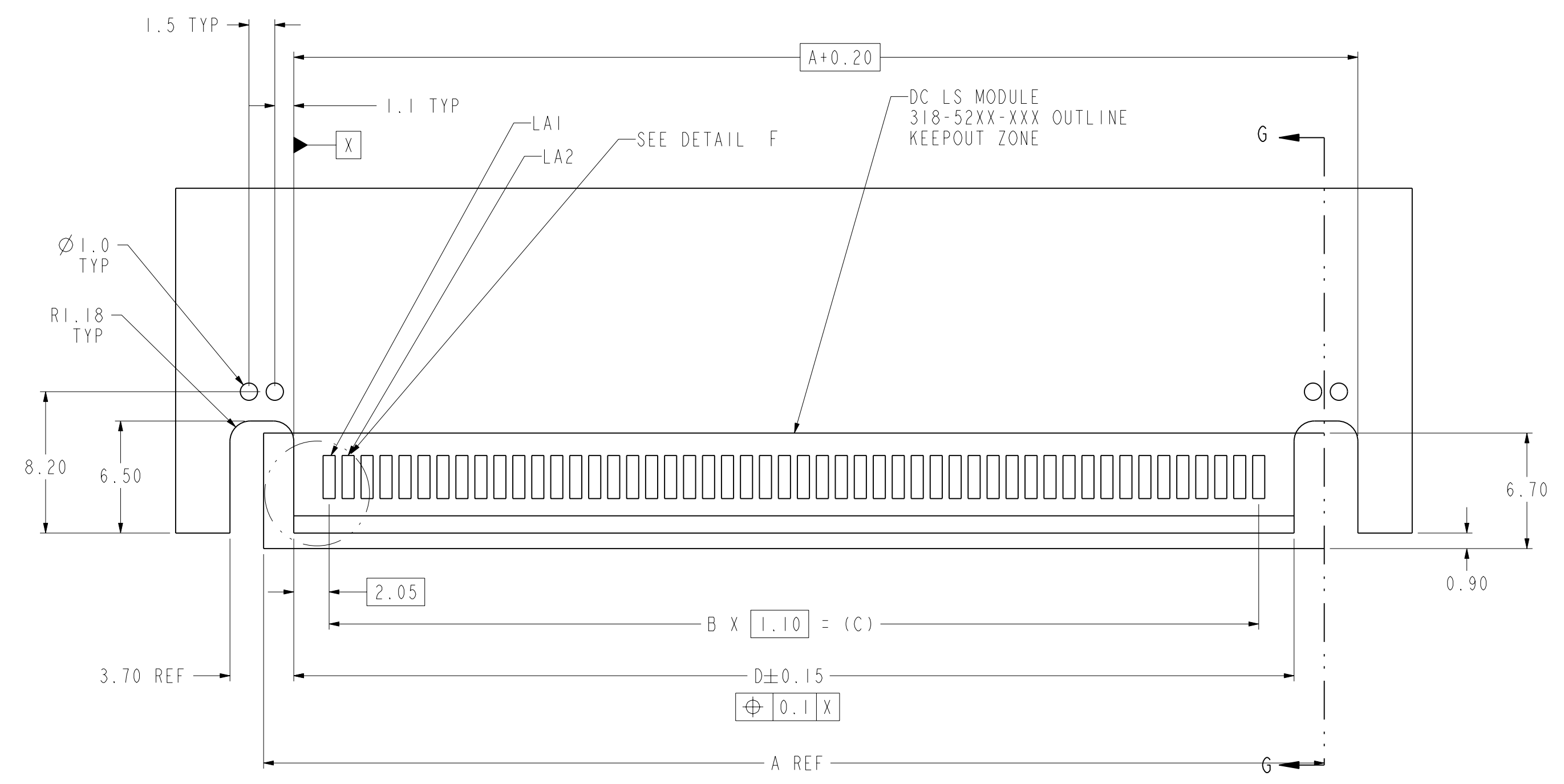
DRAWING NO. C-318-5200-500

ProE ASSEM P1068-318-5001-LS-DC-ASM 1.28+
SI-P1068-318-5200-CU-DC-LS-ASSY .drw 1.20+

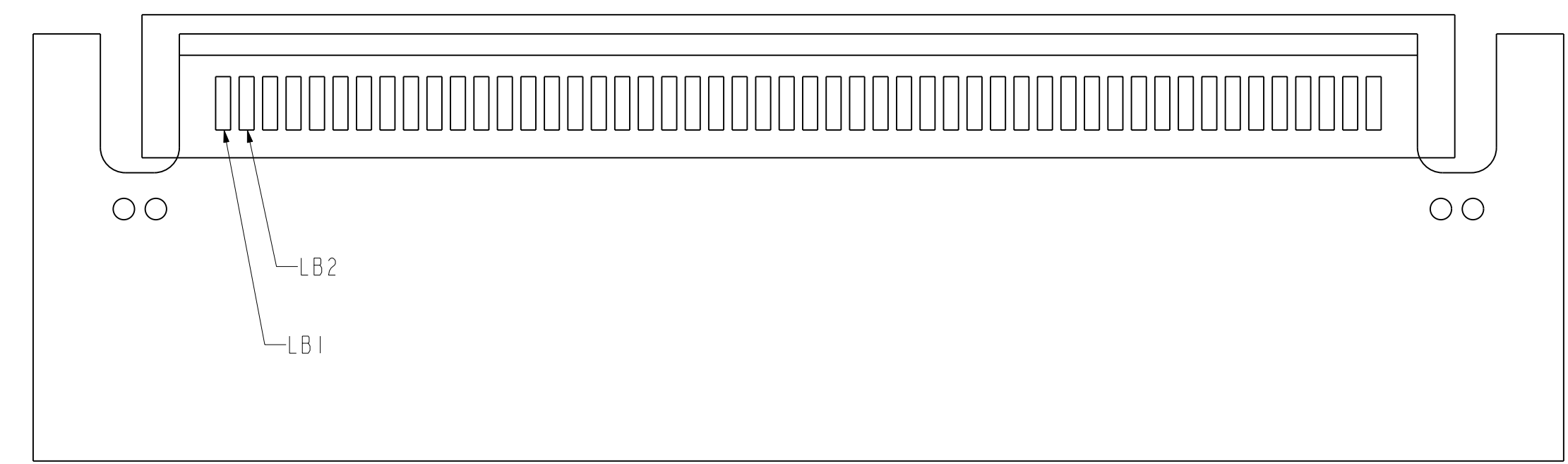
SIZE D SCALE 6/1 SHEET 1 OF 2

DRW NO. C-318-5200-500 SH 1 REV 12

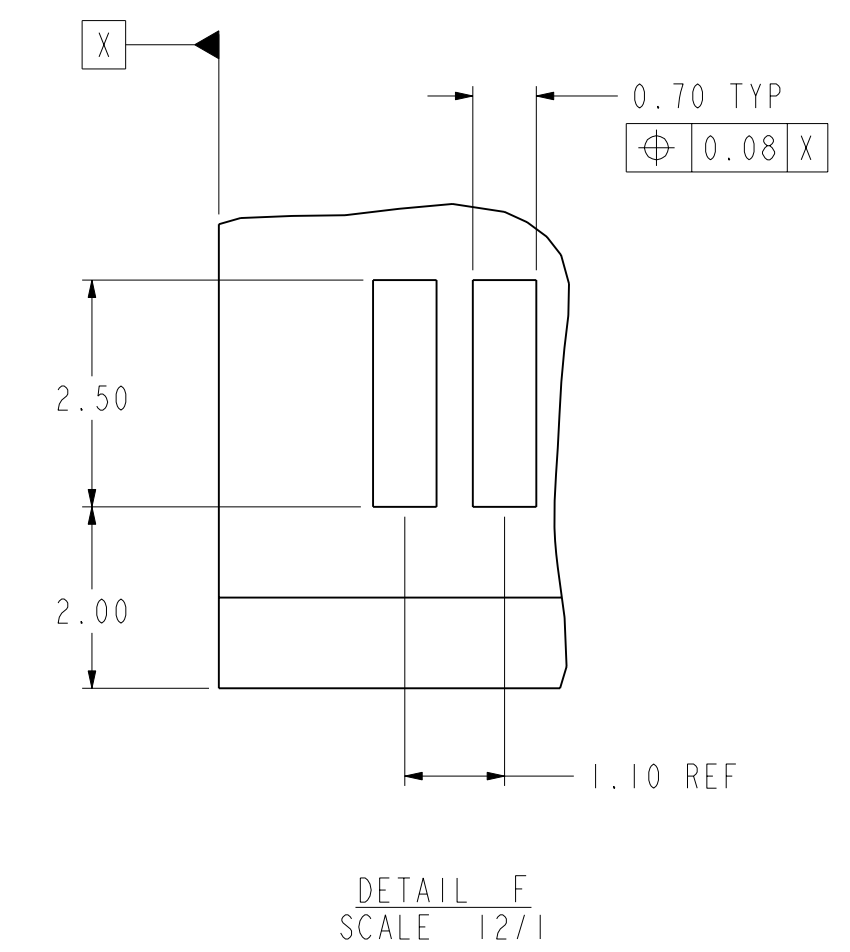
ZONE	REV	SCR NUMBER	DESCRIPTION	BY	DATE	APPROVED
N/A	N/A		SEE SHT 1 FOR REV 12 HISTORY	N/A	N/A	N/A



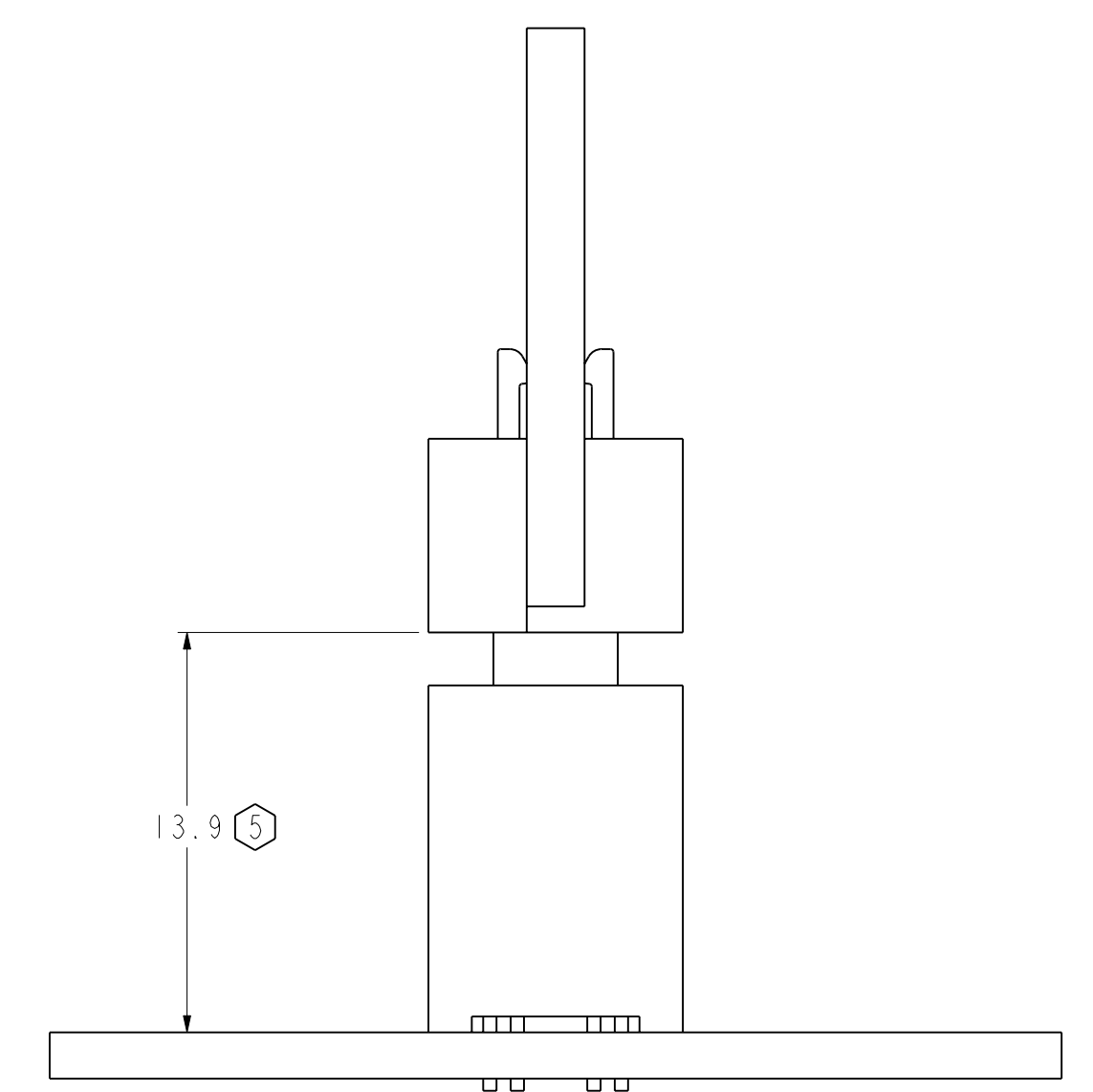
DAUGHTERCARD LS PAD PATTERN
SCALE 4/1



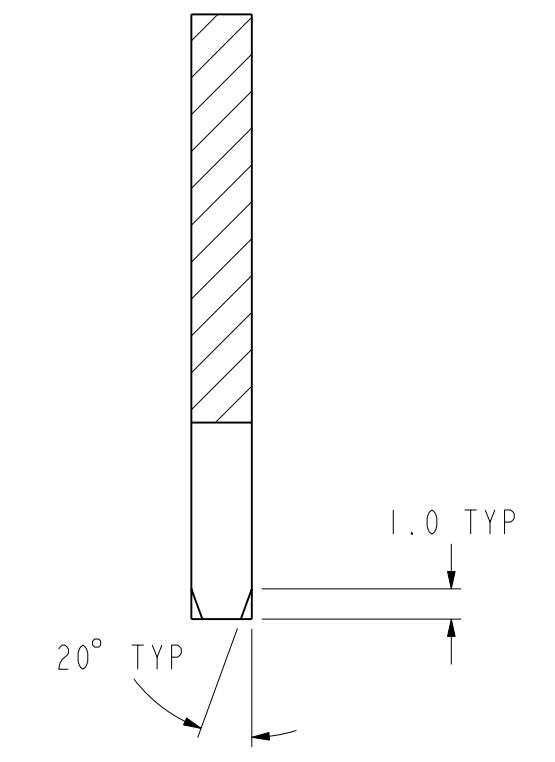
SCALE 4/1



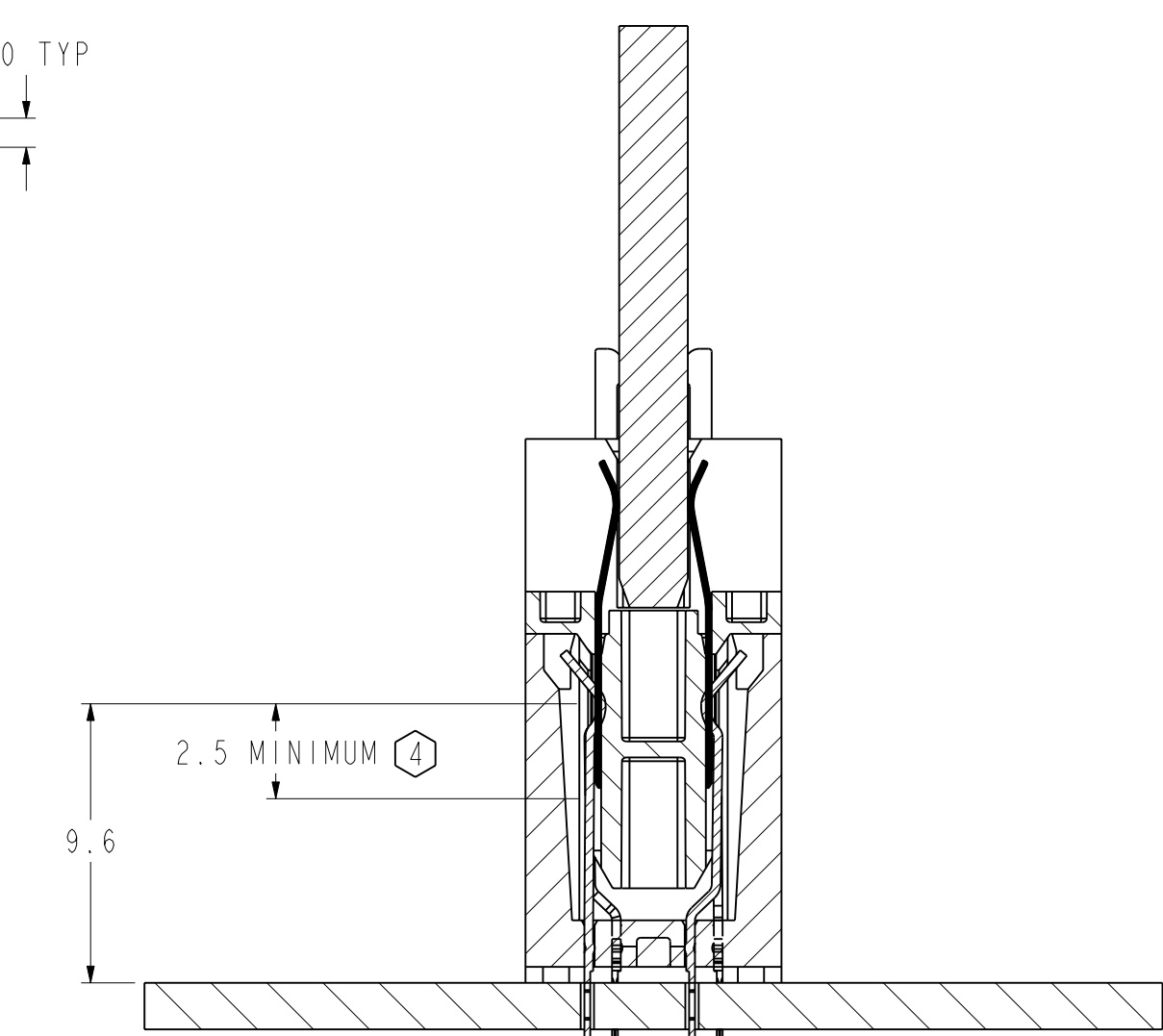
DETAIL F
SCALE 12/1



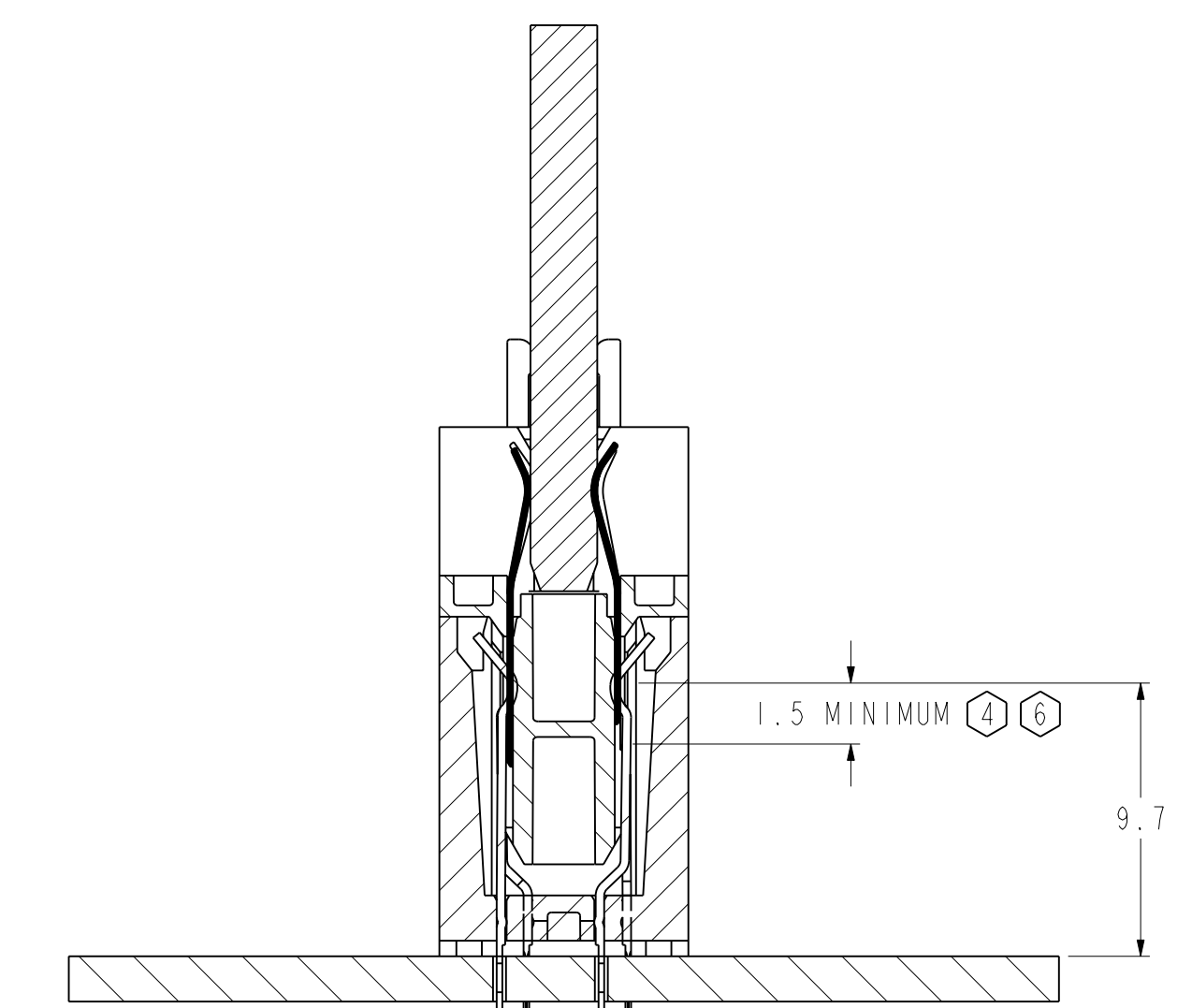
ENGAGEMENT



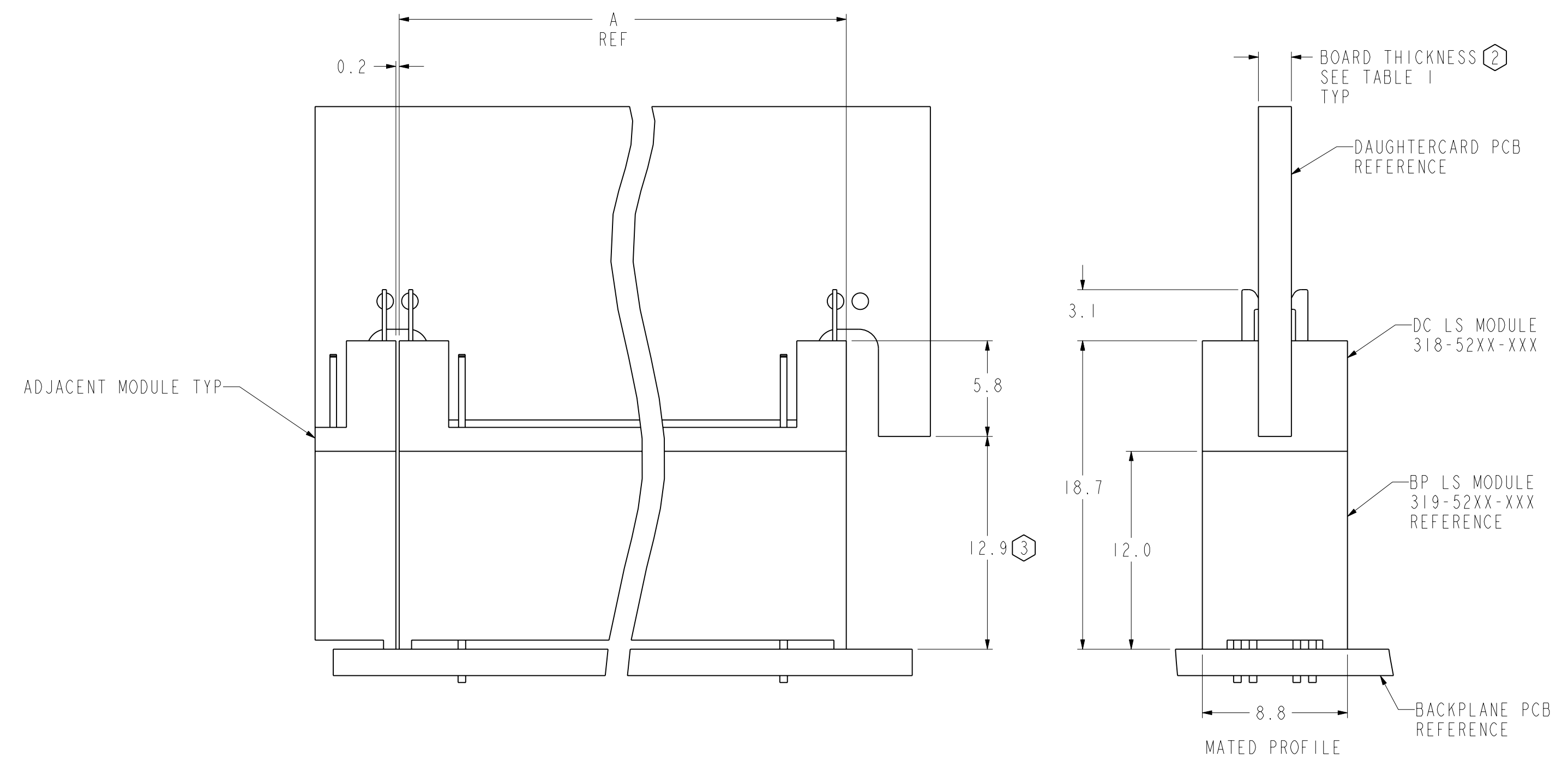
SECTION G-G
SCALE 4/1



SIGNAL WIPE



TRIGGER WIPE



MATED PROFILE

TOLERANCES		DESIGN 01-28-2004 D.MILBRAND	Amphenol TCS A Division of Amphenol Corporation 44 Simon Street, Nashua, NH, 03060 603.879.3000	
0.0	± 0.25	DRWN 05-26-2004 M.DEROSA	TITLE APTERA DC LS MODULE STRADDLE MOUNT PART NO. SEE TABLE 1 DRAWING NO. C-318-5200-500 ProE ASSEM P1068-318-5001-LS-DC-ASM J.28+ SI-P1068-318-5200-CU-DC-LS-ASSY .drw J.20+	
0.00	± 0.13	CHK 05-26-2004 D.MILBRAND		
0.000	± -	APVD 05-26-2004 D.MILBRAND		
ANGLES	± -			
UNLESS OTHERWISE SPECIFIED DIMENSIONS ARE IN MM, DECIMAL MAKER IS PERIOD			REV 12	REV 12
CUSTOMER USE DRAWING			SIZE D	SCALE 5/1
INTERPRET PER ASME Y14.5M			SHEET 2 OF 2	
CODE IDENT 31413				

DRW NO. C-318-5200-500 SH 2 REV 12