

MICROSWITCH
a Honeywell Division

FED. MFG. CODE 91929

**SWITCH - TOGGLE
(MAGNETIC HOLD-IN)**

CATALOG LISTING
26ET86-2-G

CATALOG LISTING
26ET86-2-G

PAGE 1 OF 1

ISSUE 19

REVISIONS

| | | | |
|---|---------|----------|---------|
| A | 205955 | C S L 10 | JUL 02 |
| B | 0004609 | AS | 13APR04 |

AK

CHECK

10 JUL 02

SAV

CHECK

10 JUL 02

PTC/CAD 2D

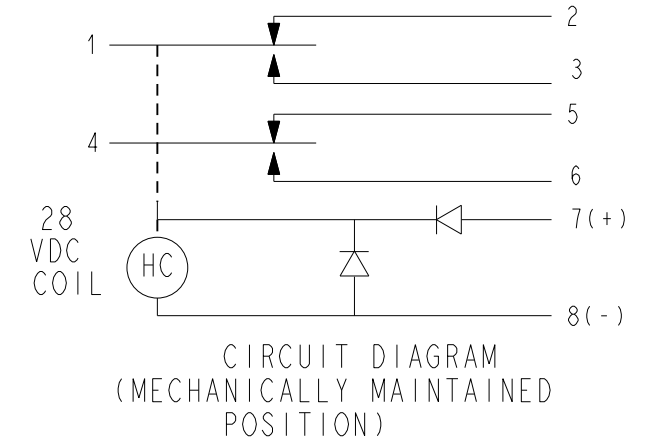
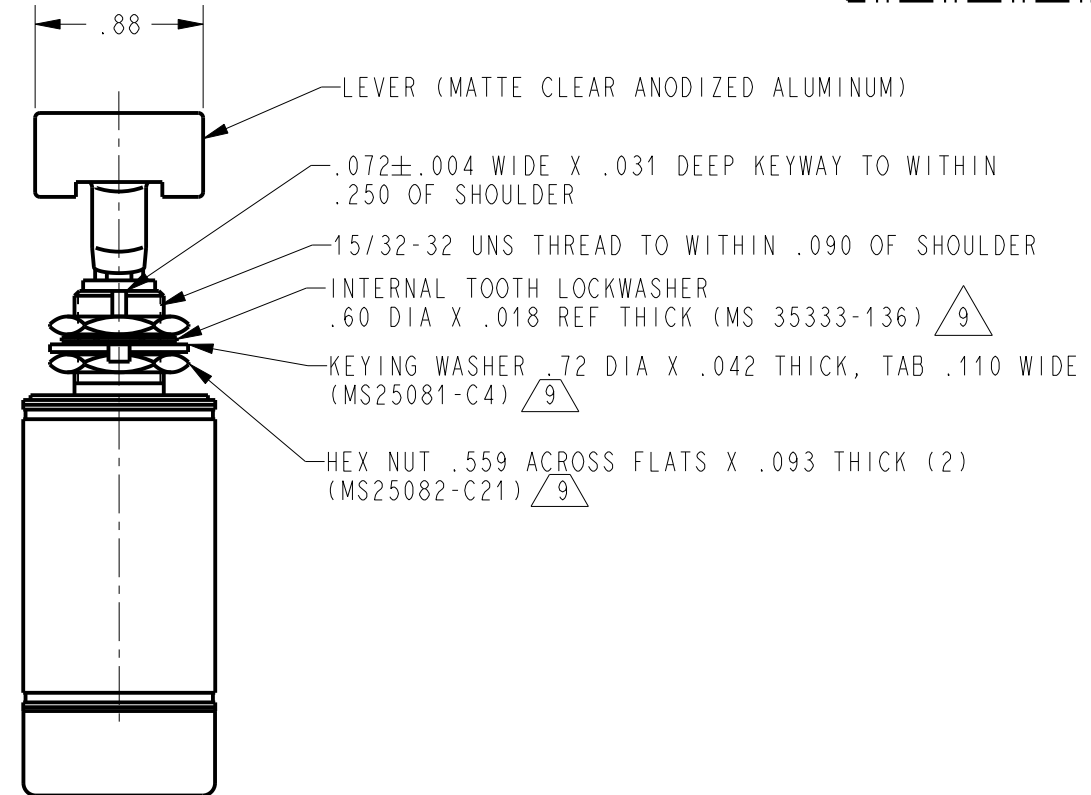
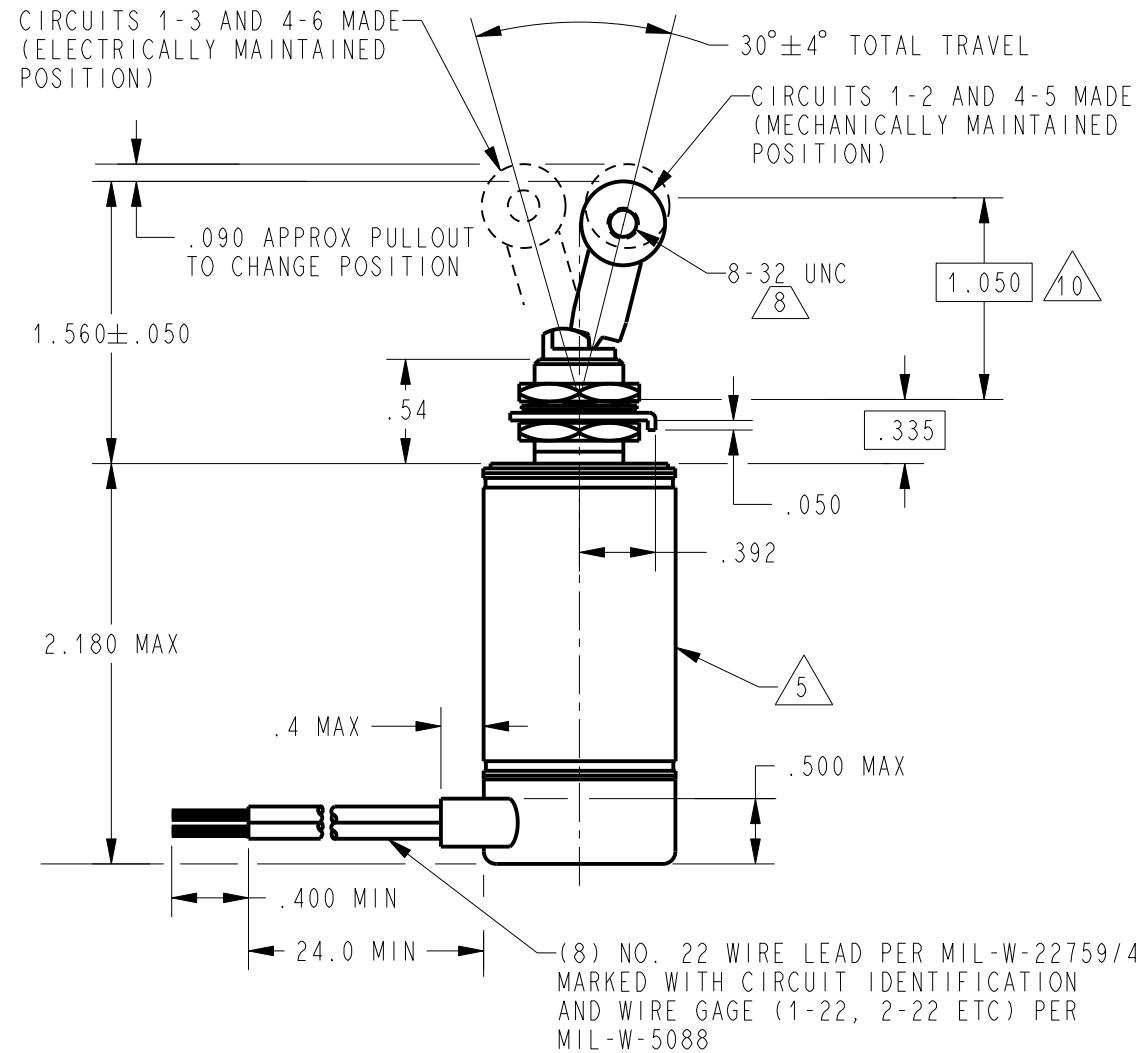
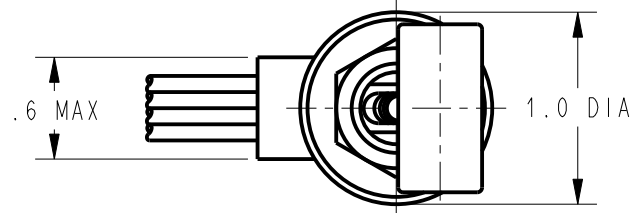
DRAWN

C S L 10

JUL 02

REPLACES -

RELEASE NO. PR-7096

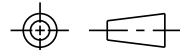


NOTES

- 1 - EXPOSED PARTS ARE OF CORROSION RESISTANT MATERIAL OR ARE SUITABLY PROTECTED TO PREVENT CORROSION. ENCLOSURE FINISHED WITH BLUE EPOXY-BASED ENAMEL COLOR NO. 25184 PER FEDERAL STANDARD 595
- 2 - SWITCH SEALED PER MIL-S-5594
- 3 - HOLD IN VOLTAGE: THE MINIMUM SPECIFIED VOLTAGE AT WHICH THE LEVER WILL REMAIN ACTUATED. HOLD IN MAY OCCUR AT A LOWER VALUE. DROP OUT VOLTAGE: THE VOLTAGE RANGE IN WHICH THE LEVER WILL BE RELEASED
- 4 - CIRCUITS CAN BE TRANSFERRED MANUALLY. ENERGIZING THE COIL WILL NOT CAUSE TRANSFER OF CIRCUITS
- 5 - CIRCUIT IDENTIFICATION IS SHOWN ON SWITCH
- 6 - SWITCHES DO NOT NECESSARILY OPERATE SIMULTANEOUSLY
- 7 - THE DIODES ARE JANTXV TYPE AND LIMIT THE EMI: SPIKES (TRANSIENTS OF DURATION LESS THAN 500 MICRO SECONDS) GENERATED BY THE SWITCH COIL SHALL NOT EXCEED +42 VOLTS OR -14 VOLTS ABSOLUTE
- 8 - SET SCREW FURNISHED TO SECURE LEVER (AN 565 HEXAGON SOCKET SETSCREW (1) ASSEMBLE THE SET SCREW TO THE LEVER AND FURNISH THE LEVER IN A SEPARATE BAG. THE LEVER SHOULD NOT BE ASSEMBLED TO THE SWITCH.
- 9 - HARDWARE MAY BE FURNISHED UNASSEMBLED PER MIL-S-5594
- 10 - FORCE TO BE APPLIED AT THIS POINT IN A DIRECTION PERPENDICULAR TO THE LEVER LONGITUDINAL AXIS

THIS DRAWING COVERS A PROPRIETARY ITEM AND IS THE PROPERTY OF MICRO SWITCH, A DIVISION OF HONEYWELL. THIS DRAWING IS NOT TO BE COPIED OR USED WITHOUT THE APPROVAL OF MICRO SWITCH

THIRD ANGLE PROJECTION



| | | | | | | |
|--|--|---------------------------------|------------|---|------------|-----------|
| CHARACTERISTICS | | ELECTRICAL DATA | | SCALE FULL | | |
| SOLENOID RATING AT 20°C | | CONTACT ARRANGEMENT S P D T (2) | | DO NOT SCALE PRINT | | |
| STEADY STATE LIMITS ----- 20-30 VDC | | RATINGS IN AMPHERES | | UNLESS OTHERWISE SPECIFIED TOLERANCES ARE | | |
| HOLD IN ----- 15 VDC | | | | ONE PLACE (.0) ± .030 | | |
| DROP OUT ----- 1.5-15 VDC | | SEA LEVEL | | TWO PLACE (.00) ± .015 | | |
| OVERRIDE FORCE AT 30 VDC ----- 2.5-10 LB MAX | | 65,000 FT | | THREE PLACE (.000) ± .005 | | |
| OPERATING FORCE ----- 7 LB MAX | | 28 VOLTS DC | INRUSH RES | IND MOTOR | INRUSH RES | IND MOTOR |
| COIL RESISTANCE ----- 220 OHM MIN | | | 4 | 2.5 | 4 | 4 |
| PULLOUT TO UNLOCK ----- 3-5 LBS | | | | | | |
| | | | | ANGLES ± | | |
| | | | | WEIGHT 8.0 OZ MAX | | |

ANSI Y14.5M-1982 APPLIES