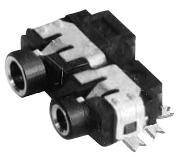
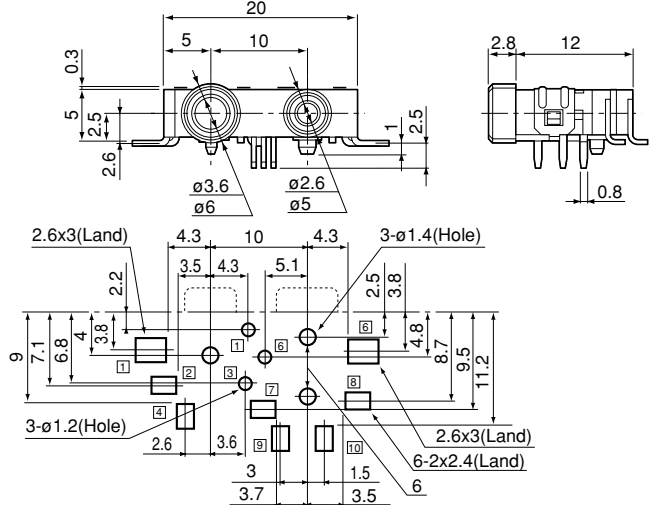
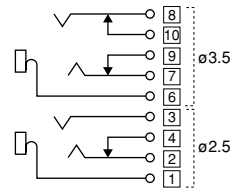
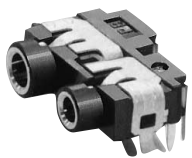
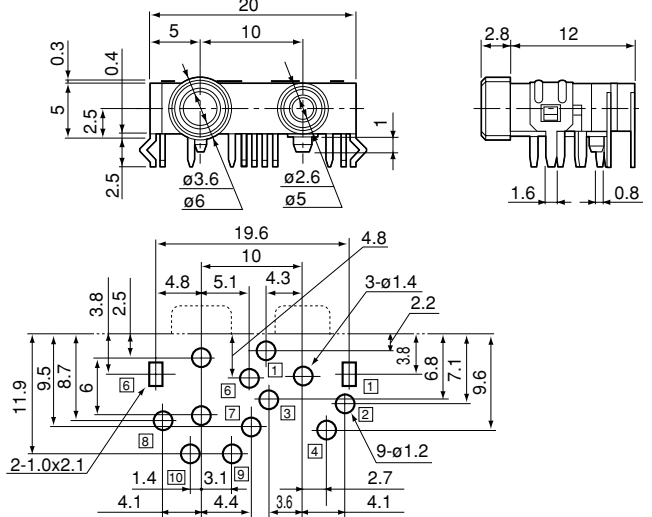
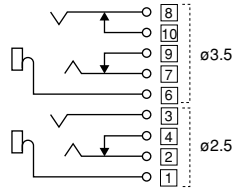

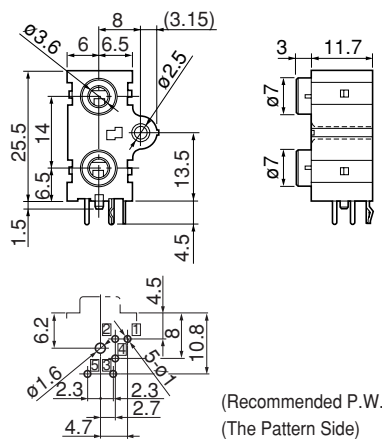
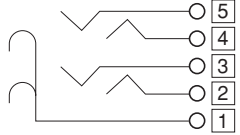
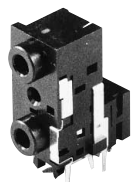


# Mini Jack (Twin Type)

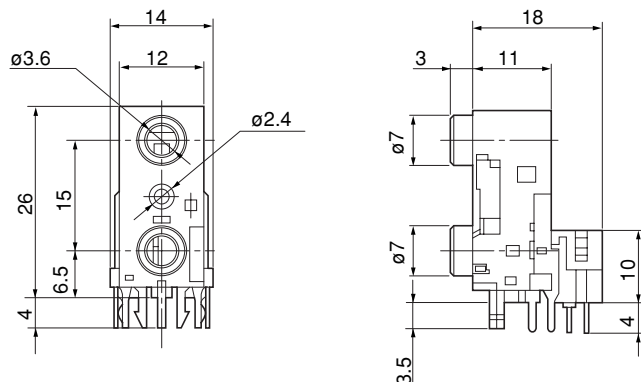
<p><b>LGA2519-3101F</b></p> 	 <p>(Recommended P.W.Board Dimension) (The Pattern Side)</p>	<p>Circuits</p> 
<p><b>SMD Type</b></p>		
<p><b>LGA2519-3200F</b></p> 	 <p>(Recommended P.W.Board Dimension) (The Pattern Side)</p>	<p>Circuits</p> 
<p><b>Discrete Type</b></p>		
<p><b>LGA6502-0300F</b></p> 	 <p>(Recommended P.W.Board Dimension) (The Pattern Side)</p>	<p>Circuits</p> 
<p><b>Discrete Type</b></p>		

# Mini Jack (Twin Type)

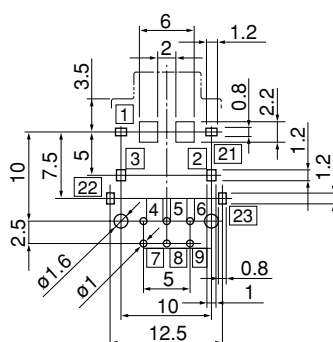
## LGA6507-0100



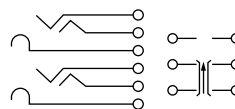
Discrete Type



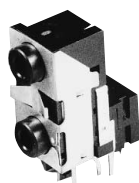
(Recommended P.W.Board Dimension)  
(The Pattern Side)



Circuits

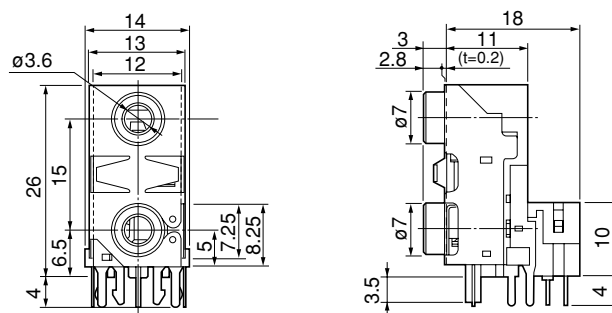


## LGA6507-0200F

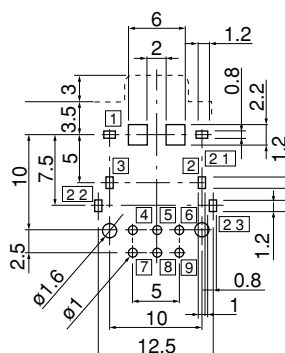


Discrete Type

Noise-Resistant Designed (With Earth Plate)



(Recommended P.W.Board Dimension)  
(The Pattern Side)



Circuits

