

SMA Brass: Solder, Semi-rigid Cable

Straight Plug

Figure 1

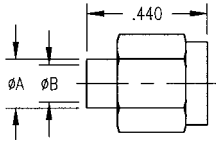
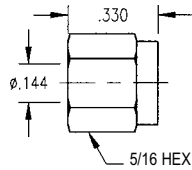
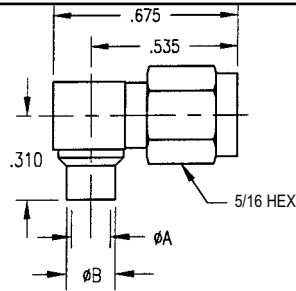


Figure 2

Part Number	Cable	Figure	A	B	Contact	Insulator	Cable Asse.Proc.
350-500-1410H	.141 SR	1	-	-	without	without	5-01
350-500-1411H	.141 SR	1	.144	.180	without	without	5-01
350-500-0850H	.085 SR	2	.089	.120	with	unassembled	5-02
350-500-0858H	.085 SR	2	.089	.120	with	assembled	5-02
350-500-1412H	.141 SR	2	.144	.180	with	unassembled	5-02
350-500-1418H	.141 SR	2	.144	.180	with	assembled	5-02

- See page 85,86 for cable assembly procedures: 5-01,5-02
- Part number shown is for gold plated.
- For nickel plate change suffix to "N".

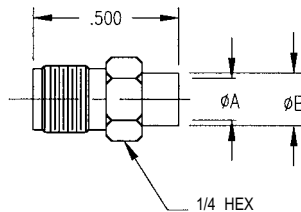
12.4 GHz Right Angle Plug



Part Number	Cable	A	B
352-500-0850H	.085 SR	.089	.120
352-500-1410H	.141 SR	.144	.180

- See page 87 for cable assembly procedures: 5-03
- Part number shown is for gold plated.
- For nickel plate change suffix to "N".

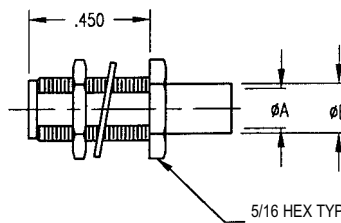
Straight Jack



Part Number	Cable	A	B
351-500-0850H	.085 SR	.089	.120
351-500-1410H	.141 SR	.144	.180

- See page 86 for cable assembly procedures: 5-02
- Part number shown is for gold plated.
- For nickel plate change suffix to "N".

Straight Jack Bulkhead

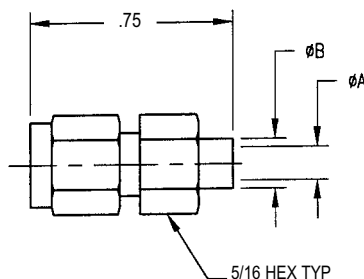


Part Number	Cable	A	B	Mounting Hole
351-575-0850H	.085 SR	.089	.120	No. 075
351-575-1410H	.141 SR	.144	.180	No. 075

- See page 86 for cable assembly procedures: 5-02
- See page 83 for mounting hole layout.
- Part number shown is for gold plated.
- For nickel plate change suffix to "N".

SMA: Brass Solder/Clamp, Semi-rigid

Straight Plug Captive Contact



Part Number	Cable	A	B
350-600-0850H	.085 SR	.089	.120
350-600-1410H	.141 SR	.144	.180

- See page 95 for cable assembly procedures: 6-01
- Part number shown is for gold plated.
- For nickel plate change suffix to "N".

Note: Dimensions shown in inches.