

**NOTICE:** THE INFORMATION AND DESIGN CONTAINED HEREIN IS THE PROPERTY OF PULSE WHO RESERVES ALL RIGHTS THEREIN.

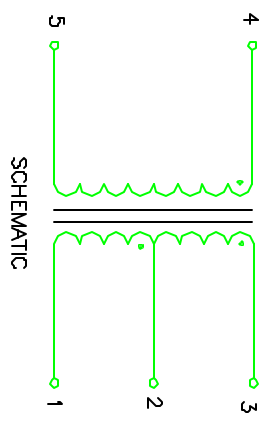
C2273ANL

**ELECTRICAL:**  
UNLESS OTHERWISE SPECIFIED, TESTING IS PERFORMED AT 25°C ±5°C

IMPEDANCE RATIO	TURNS RATIO	INSERTION LOSS (dB TYP/MAX)	AMPLITUDE BALANCE (dB TYP/MAX)	PHASE BALANCE (Degrees TYP/MAX)	RETURN LOSS (dB TYP/MIN)
PRISEC {+/- 2%}	PRISEC {+/- 2%}	5-85MHz	5-65MHz	5-65MHz	5-65MHz
1:4CT	1:2CT	0.50/0.70	0.80/1.20	0.01/0.02	0.02/0.05
		65-200MHz	65-200MHz	65-200MHz	65-200MHz
		0.50/0.70	0.80/1.20	0.01/0.02	0.02/0.05
				0.4/2.0	2.0/5.0
					20/15
					13/7.0

**NOTES:**

- Part with Top Disc is designated with an "A".
- ROHS COMPLIANT
- Tape & Reel packaging can be ordered by adding a "T" suffix to the Part Number.



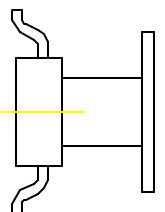
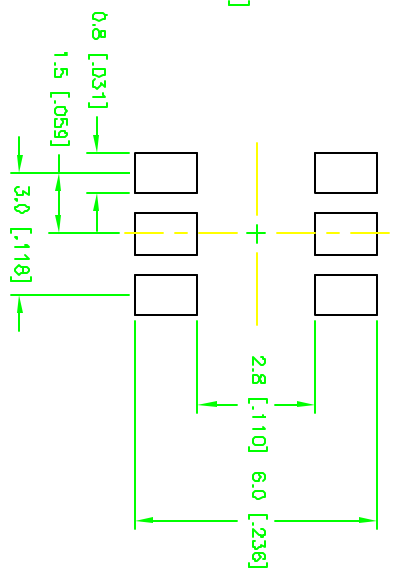
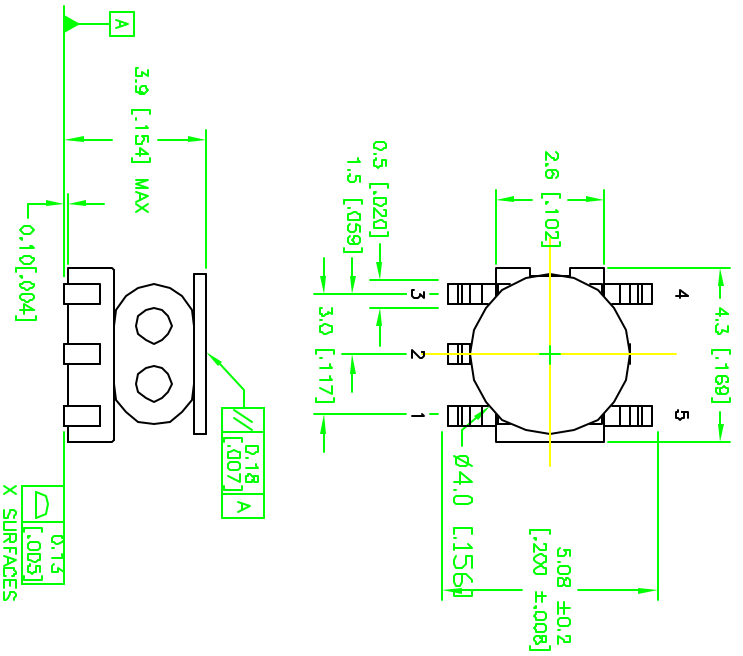
San Diego, California

XFMR, RF, SGL, 1:4CT, 5-200MHZ

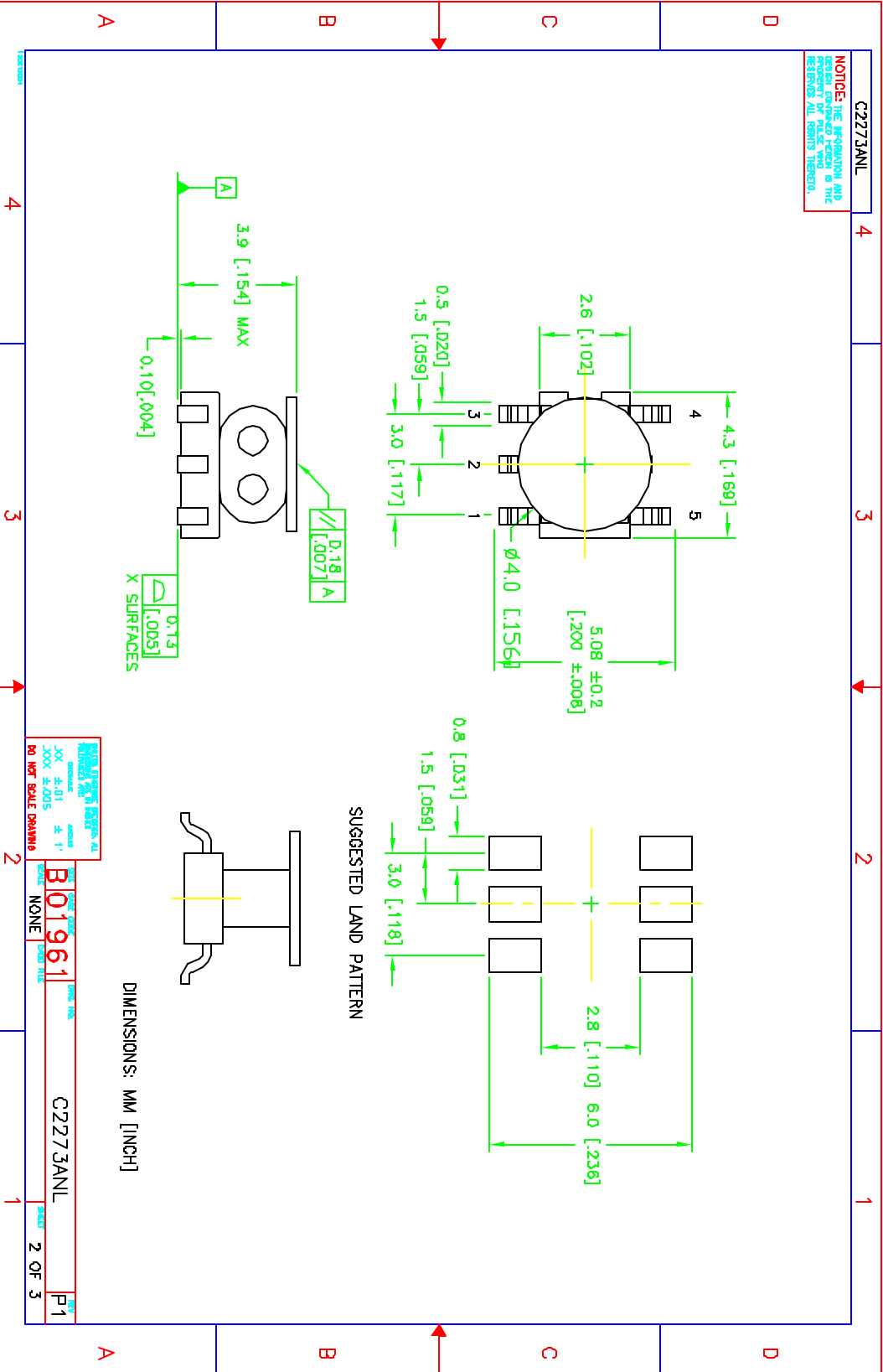
TITLE	C2273ANL
SIZE	11x17
DWG CODE	B01961
DWG FILE	C2273ANL
SCALE	NONE
CADD FILE	C2273ANL/C2273ANL-1.DWG
SHEET	1 OF 3
REV	P1

**C2273ANL**

**NOTICE: THE INFORMATION AND DESIGN CONTAINED HEREIN IS THE PROPERTY OF THE COMPANY AND THE COMPANY RESERVES ALL RIGHTS THEREON.**



DIMENSIONS: MM [INCH]



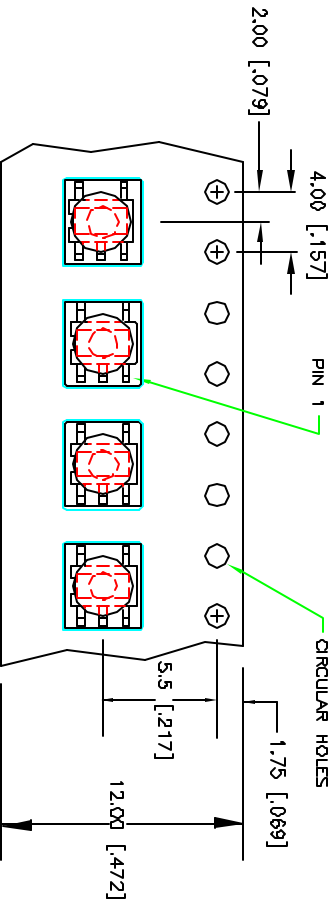
<small>THIS DRAWING IS THE PROPERTY OF THE COMPANY AND IS NOT TO BE REPRODUCED OR TRANSMITTED IN ANY FORM OR BY ANY MEANS, ELECTRONIC OR MECHANICAL, INCLUDING PHOTOCOPYING, RECORDING, OR BY ANY INFORMATION STORAGE AND RETRIEVAL SYSTEM, WITHOUT THE WRITTEN PERMISSION OF THE COMPANY.</small>	
DATE	REV
01/19/2011	P1
BY: <b>B01961</b>	CHKD: <b>2 OF 3</b>
DATE: NONE	REV: NONE
<b>C2273ANL</b>	
<small>DO NOT SCALE DRAWING</small>	

**NOTICE: THE INFORMATION AND DESIGN CONTAINED HEREIN IS THE PROPERTY OF THERMO FISHER AND RESERVES ALL RIGHTS THEREON.**

C2273ANL

**TAPE and REEL INFORMATION**

Weight:  
Tape and Reel:

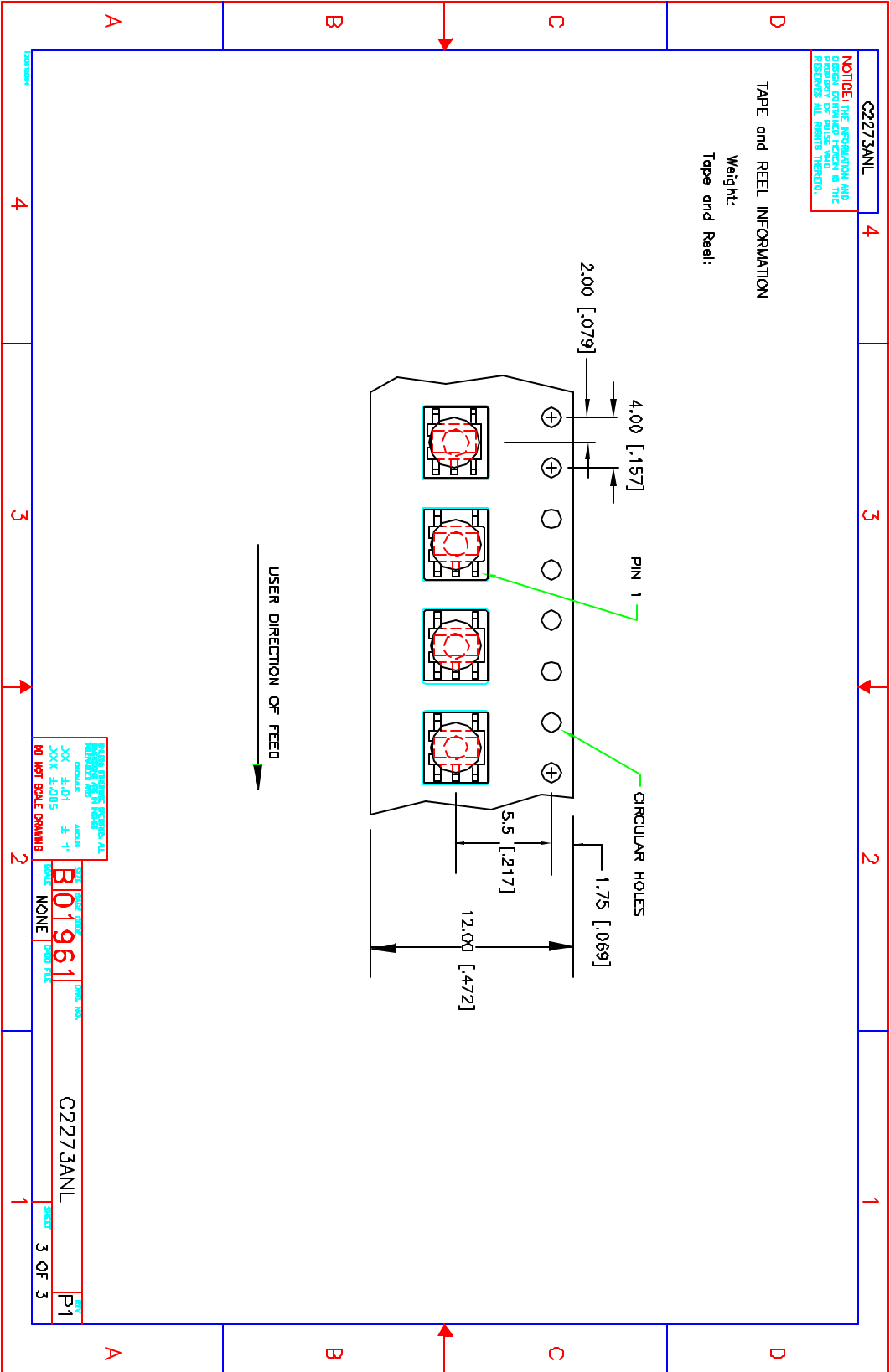


USER DIRECTION OF FEED

REEL INFORMATION  
 XXXX ±.01  
 XXXX ±.0015  
 DO NOT SCALE DRAWING

REEL TYPE: B01961  
 NONE  
 PART NO. 106

C2273ANL  
 SHEET 3 OF 3  
 REV P1



NOTICE: THE INFORMATION AND DESIGN CONTAINED HEREIN IS THE PROPERTY OF PULSE WHO RESERVES ALL RIGHTS THEREIN.

TAPE & REEL PACKAGING:

A.] WITH TOP DISC:

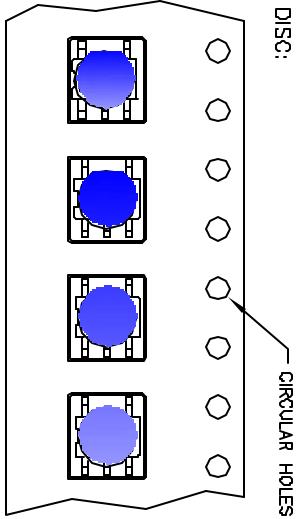


FIGURE 1: CX2248ANLT, C2273ANLT

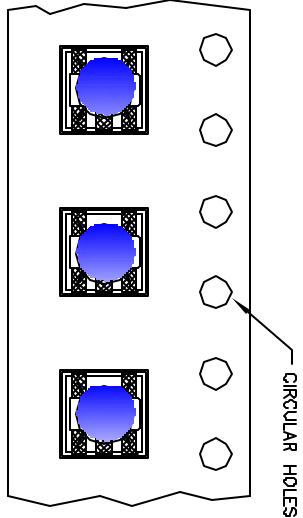


FIGURE 2: CX2241ANLT

B.] NO TOP DISC:

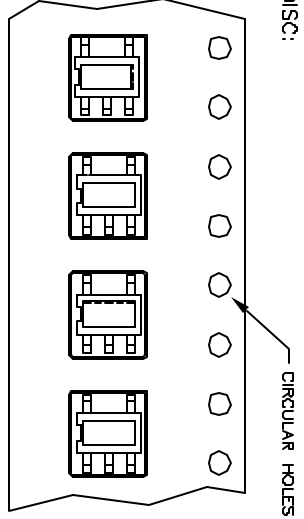


FIGURE 3: CX2248NLT, C2273NLT

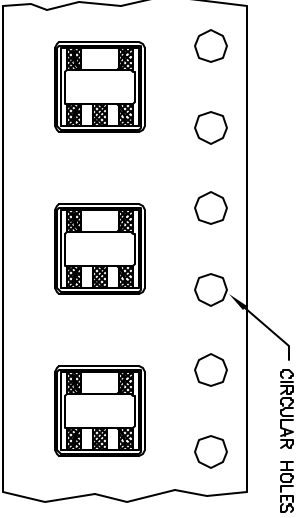


FIGURE 4: CX2241NLT

PULSE - PRELIMINARY - 120806

UNLESS OTHERWISE SPECIFIED, ALL DIMENSIONS ARE IN INCHES.  
 DIMENSIONS ARE IN INCHES  
 TOLERANCES ARE:  
 FRACTIONS DECIMALS ANGLES  
 XX ±.01 ±.1°  
 XXX ±.005  
 DO NOT SCALE DRAWING

SIZE: **B01961** DWG. NO.: **T&R DRAWING** REV: **P1**  
 SCALE: NONE CADD FILE SHEET