

SPECIFICATIONS

Mechanical

Mating Force: 4.5kg (10 Lbf.) max.
Unmating Force: 1.0kg (2.2Lb) min.
Durability : 500 Cycles

Electrical

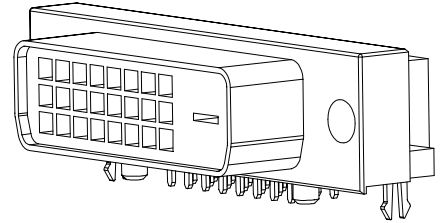
Voltage Rating: 12V max.
Current Rating: 2A max.
Contact Resistance: 20mΩ max.
Dielectric Withstanding Voltage: 500V.
Insulation Resistance: 1GΩ

Physical

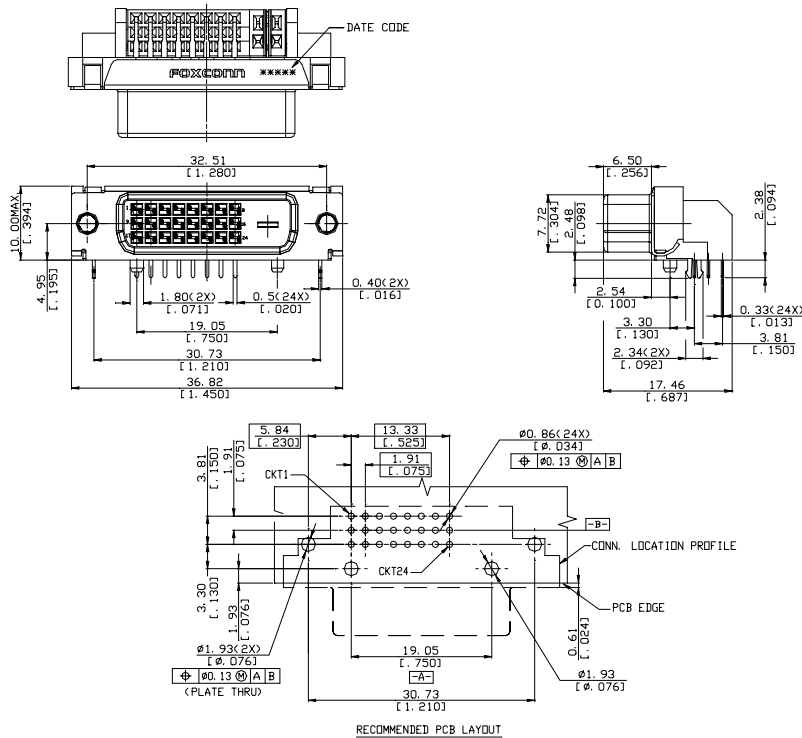
Housing: Thermoplastic, UL 94V-0
Contact: Copper alloy
Plating: See "ORDERING INFORMATION"
Metal Spring: Copper alloy
Operating Temperature: -55 to +105

MINI DIN Connector

DVI Series
D Type, Normal Type conn.



DRAWING



ORDERING INFORMATION

PART NO.: Q H 1 1 1 2 * -NDW00-4 F

- DVI CONN.
- BODY TYPE:
 - 1 = RIGHT ANGLE PCB MOUNT
- TERMINATION TYPE:
 - 1 = FEMALE
- CONTACT POS.NO.
 - 12 = 24 POS.
- GOLD PLATED
 - 1 = GOLD FLASH
 - 3 = 30 u"
- CONFIGURATION
 - N = NORMAL
 - R = REVERSE
- LEAD FREE
 - N = NONE
 - F = LEAD FREE
- PACKAGE CODE
 - 4 = SOFT TRAY
- EXTENSION CODE
- PLASTIC COLOR
 - W = IVORY
 - B = BLACK
- INTERFACE:
 - D: DIGITAL ONLY
 - I: COMBINED DIGITAL & ANALOG