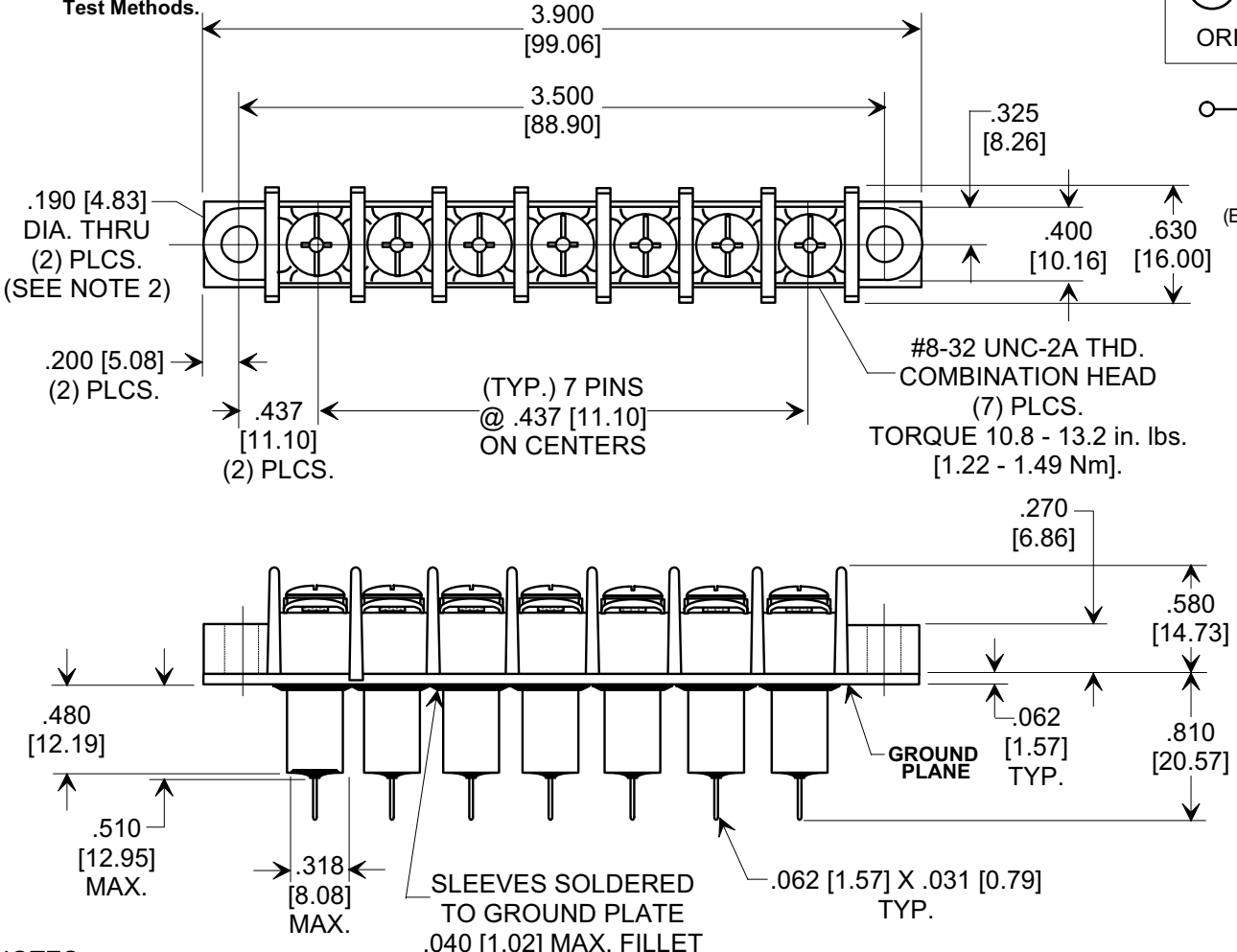
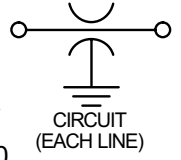
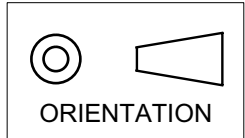


MARKETING SALES DRAWING

DIMENSIONS IN INCHES - DO NOT SCALE THIS DRAWING
DIMENSIONS IN METRIC - []

Electrical Testing
 per Tusonix standard
 test plans and Mil-Std-202
 Test Methods.



NOTES:

1. TUSONIX STANDARD PART NUMBER: 7607-602. TUSONIX RoHS COMPLIANT PART NUMBER: 7607-602 LF. CUSTOMER MUST SPECIFY STANDARD OR RoHS PART NUMBER WHEN ORDERING.
2. LEAD FINISH: MATTE TIN.
3. PLATE MATERIAL: .062" COPPER ALLOY, MATTE TIN FINISH.
4. PART MARKING: PART NUMBER, DATE CODE AND UL RECOGNITION: STANDARD PART: WHITE INK. RoHS PART: GREEN INK.
5. MAX. SOLDERING TEMPERATURE 500°F [260°C].
6. BLOCK MOUNTING: RECOMMENDED MOUNTING SCREWS (# 8 PAN HEAD). TORQUE 4.5 - 5.5 in. Lb. [0.51 - 0.62 Nm].
7. MOLDED MATERIAL: HIGH TEMPERATURE THERMOPLASTIC (PBT), UL RATED 94 V-O.
8. RATED FOR DIRECT CURRENT APPLICATIONS ONLY.
9. U.L. FILE NO: E201344.

Cx (pF)	WORKING VOLTAGE -40°C TO +125°C	I _{DC}	D.W.V.	I.R. MIN.	TYPICAL NO LOAD INSERTION LOSS (dB) AT 25°C PER MIL-STD-220			
					10 MHz	100 MHz	1 GHz	10 GHz
12,000/27,000	150 VDC	30 Amps	2121 VDC	10 G Ω	28	45	70	70

REVISION RECORD	0	ADDED NOTES 1-4 & RE-NUMBERED S.M. 09-29-05	TOLERANCES unless otherwise specified		Title "C" FEED - THRU TERMINAL BLOCK 7 POSITION (UL RECOGNIZED)		
	Original Release C.O. 20030718-1-07		2 PLC. DECIMAL ± N/A	Drawn S.M. 07-31-03		Scale FULL	
	Cx WAS 15,000 MIN. S.M. 08-24-05		3 PLC. DECIMAL ± .030 [0.76]	Approved R.C. 07-31-03		A	
	4 20050818-12-26		ANGLES ± N/A	Approved R.C. 07-31-03			
5 20050922-1-16	TUSONIX TUCSON, ARIZONA		7607-602				
6 20051006-3-08							

X-2015 Rev-0